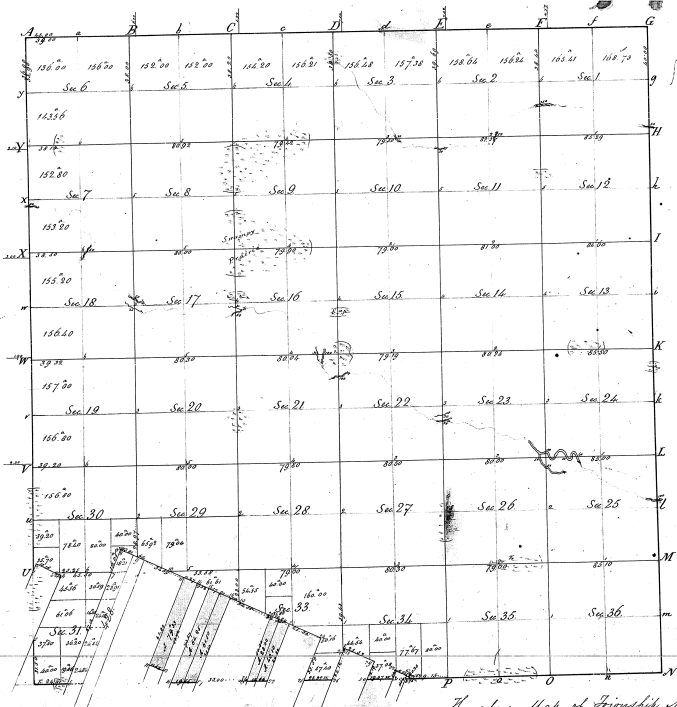


Township N<sup>o</sup> 5 S. Range N<sup>o</sup> 8 East Mer. Mich.



Original survey made by Joseph Fletcher in 1849.  
 Remeasurements by Orange Eiderin, D.S. in 1867.

The above Map of Township N<sup>o</sup> 5 South, Range N<sup>o</sup> 8 East of the  
 Principal Meridian Michigan is strictly conformable to the field notes of the  
 survey thereof on file in this Office, which have been examined and returned  
 correct by the  
 Survey General Office.  
 Dated May 29, 1880

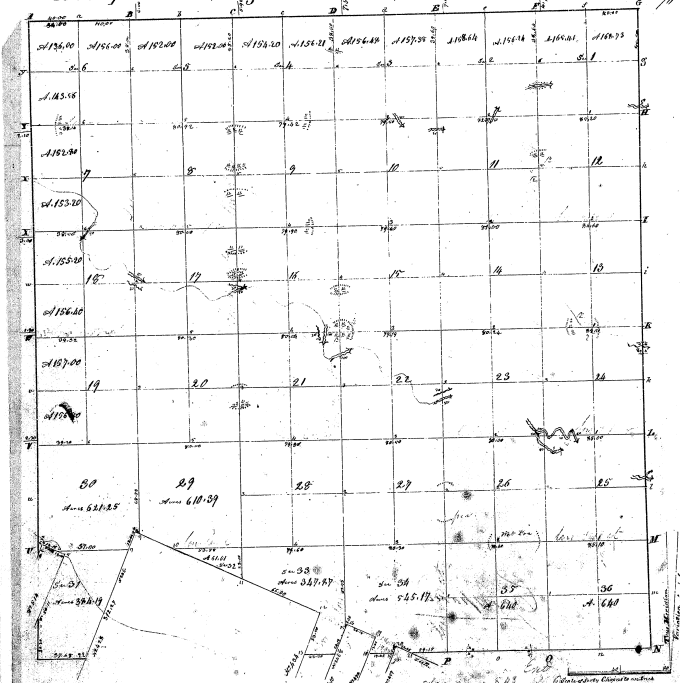
Made 1880  
 Survey General

Orange Eiderin

31-23

31-23

Township N<sup>o</sup> V South, Range N<sup>o</sup> VIII East of Mer. (M.D. 20)



31-23

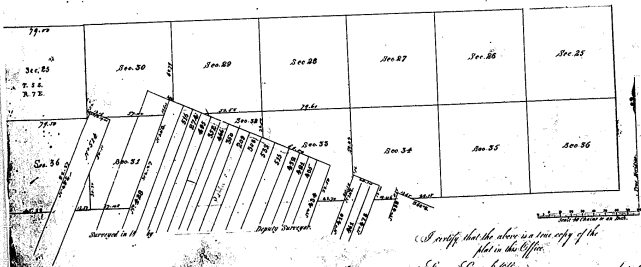
31-2-3 (A)

Compared to a plat with our instructions from Bureau of Land Management of the United States, bearing date 1877, of April 1877, of same adjoining land, and we have the same boundary, and that being why that it has such marks and lines to be returned and returned as on represented on said plat and described in the said plat, more than, and returned with the plat with the surveying office.

Calif. this 25<sup>th</sup> day of April 1877

J. S. [Signature]

Township N<sup>o</sup> 5 South, Range N<sup>o</sup> 8 East Mer.

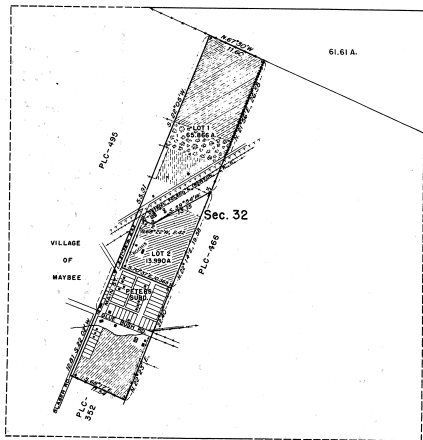


I certify that the above is a true copy of the  
 plat in the Office.  
 George Stewart, Officer.      Wm. Seal

FROM GROUP 60-B  
 AS A.C.  
 BARRIS AND FIELD NOTES  
 OF A.C., etc. 1010-1855

TOWNSHIP 5 SOUTH, RANGE 8 EAST, OF THE MICHIGAN MERIDIAN, MICHIGAN  
 LIMITED DEPENDENT RESURVEY AND SUBDIVISION OF PUBLIC LAND, SEC. 32

31-23  
 31-23(4)



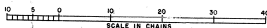
THIS PLAT REPRESENTS THE RETRACEMENT AND REESTABLISHMENT OF THE BOUNDARIES OF THE 79.33 ACRE TRACT OF PUBLIC LAND IN SEC. 32, AS SHOWN UPON THE PLAT APPROVED MAY 29, 1850, AND THE SUBDIVISION OF THAT TRACT.

UNITED STATES DEPARTMENT OF THE INTERIOR  
 BUREAU OF LAND MANAGEMENT  
 WASHINGTON, D. C., FEBRUARY 23, 1951

THIS PLAT IS STRICTLY CONFORMABLE TO THE APPROVED FIELD NOTES, AND THE SURVEY, HAVING BEEN CORRECTLY EXECUTED IN ACCORDANCE WITH THE REQUIREMENTS OF LAW AND THE REGULATIONS OF THIS BUREAU, IS HEREBY ACCEPTED.

FOR THE DIRECTOR

*Earl S. Harrington*  
 CHIEF, DIVISION OF CADASTRAL ENGINEERING

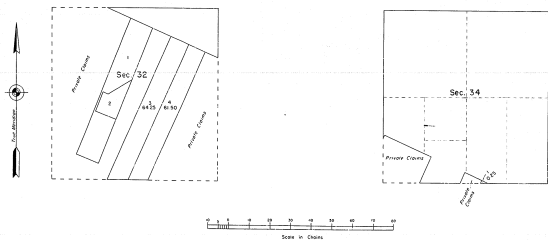


AREA RESURVEYED 79.36 ACRES

SURVEY EXECUTED BY NORVILLE E. SHEARER  
 FROM JULY 5 TO 10, 1950, UNDER SPECIAL INSTRUCTIONS  
 FOR GROUP 57 DATED JUNE 27, 1950.


TOWNSHIP 5 SOUTH, RANGE 8 EAST, OF THE MICHIGAN MERIDIAN, MICHIGAN  
 SUPPLEMENTAL PLAT, SECTIONS 32 AND 34

This supplemental plat, providing lot numbers for same when same were shown on previous plans without distinction, is based on the plat approved Aug 28, 1890, and the plat accepted February 23, 1901.



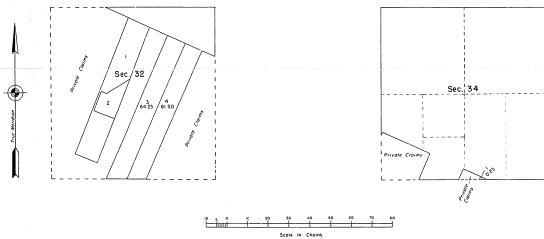
UNITED STATES DEPARTMENT OF THE INTERIOR  
 BUREAU OF LAND MANAGEMENT  
 Washington, D. C. September 18, 1966

This plat, showing new lotting, is based upon the official records, and having been correctly compared to accordance with the regulations, is hereby accepted.

For the Director  
  
 Chief, Division of Land Office

TOWNSHIP 5 SOUTH, RANGE 8 EAST, OF THE MICHIGAN MERIDIAN, MICHIGAN  
SUPPLEMENTAL PLAT, SECTIONS 32 AND 34

This supplemental plat, providing lot numbers for areas which were shown on previous plats without designations, is based on the plat approved May 25, 1890, and the plat accepted February 27, 1951.



UNITED STATES DEPARTMENT OF THE INTERIOR  
BUREAU OF LAND MANAGEMENT  
Washington, D. C. September 19, 1966

This plat, showing new listings, is based upon the official records, and having been carefully prepared to accordance with the regulations, is hereby accepted.

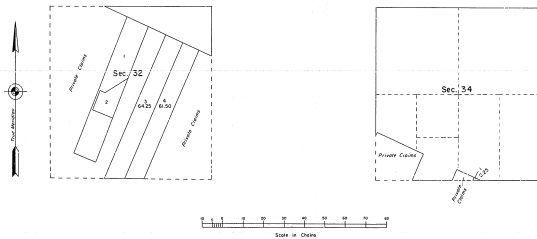
For the Director

*Elmer*  
Chief, Division of Surveying

TOWNSHIP 5 SOUTH, RANGE 8 EAST, OF THE MICHIGAN MERIDIAN, MICHIGAN

SUPPLEMENTAL PLAT, SECTIONS 32 AND 34

This supplemental plat, showing lot numbers for areas which were shown on previous plats without designations, is based on the plat approved May 25, 1895, and the plat accepted February 23, 1931.



UNITED STATES DEPARTMENT OF THE INTERIOR  
BUREAU OF LAND MANAGEMENT  
Washington, D. C. September 19, 1966

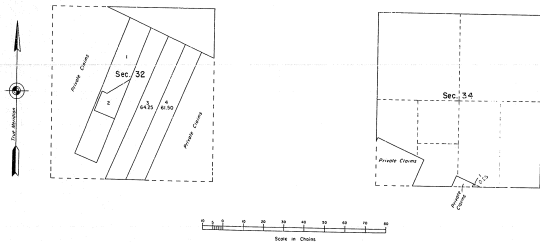
This plat, showing new lotting, is based upon the official records, and having been accurately prepared in accordance with the regulations, is hereby accepted.

For the Director

*[Signature]*  
Chief, Division of Land Surveying

TOWNSHIP 5 SOUTH, RANGE 8 EAST, OF THE MICHIGAN MERIDIAN, MICHIGAN  
 SUPPLEMENTAL PLAT, SECTIONS 32 AND 34

This supplemental plat, showing lot numbers for areas which were shown on previous plats without subdivisions, is based on the plat approved May 29, 1875, and the plat accepted February 23, 1921.



UNITED STATES DEPARTMENT OF THE INTERIOR  
 BUREAU OF LAND MANAGEMENT  
 Washington, D. C. September 15, 1966

This plat, showing new listings, is based upon the original records, but having been carefully prepared in accordance with the regulations, is hereby accepted.

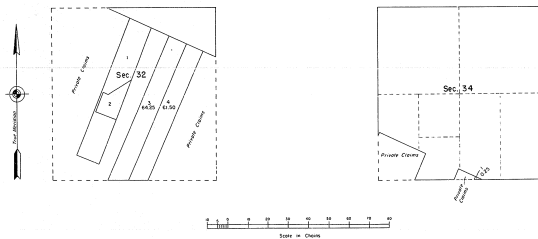
For the Director

*[Signature]*  
 Chief, District of Michigan



TOWNSHIP 5 SOUTH, RANGE 8 EAST, OF THE MICHIGAN MERIDIAN, MICHIGAN  
SUPPLEMENTAL PLAT, SECTIONS 32 AND 34

This supplemental plat, providing lot numbers for areas which were shown on previous plats without description, is based on the plat approved May 25, 1850, and the plat accepted February 27, 1951.



UNITED STATES DEPARTMENT OF THE INTERIOR  
BUREAU OF LAND MANAGEMENT  
Washington, D. C. September 15, 1966

This plat, showing new lotting, is based upon the official records, and having been carefully prepared in accordance with the regulations, is hereby accepted.

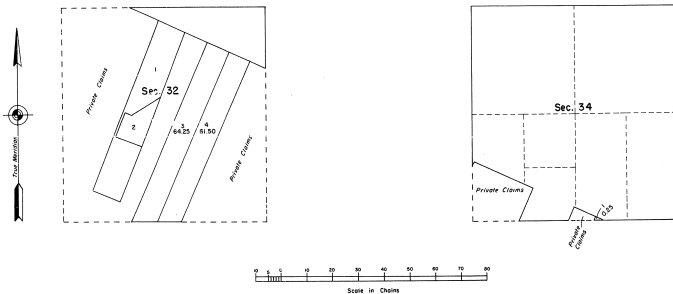
For the Director

  
Chief, Division of Surveying

TOWNSHIP 5 SOUTH, RANGE 8 EAST, OF THE MICHIGAN MERIDIAN, MICHIGAN  
 SUPPLEMENTAL PLAT, SECTIONS 32 AND 34

31-23

This supplemental plat, providing lot numbers for areas which were shown on previous plats without designations, is based on the plat approved May 29, 1850, and the plat accepted February 23, 1951.



UNITED STATES DEPARTMENT OF THE INTERIOR  
 BUREAU OF LAND MANAGEMENT  
 Washington, D. C. September 19, 1966

This plat, showing new lottings, is based upon the official records, and having been correctly prepared in accordance with the regulations, is hereby accepted.

For the Director

*Ed. [Signature]*  
 Chief, Division of Engineering