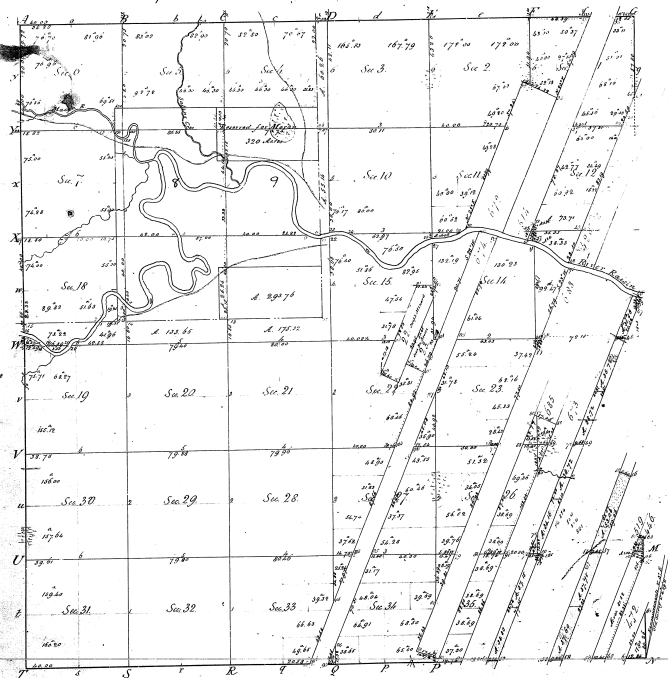


Township 17 6 S. Range 17 E. Mer. Mich.



31-28

⑤
82-15

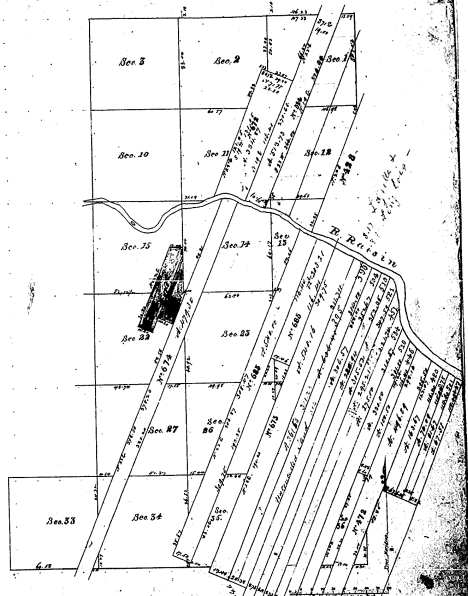
Original survey made by Joseph Fletcher D.S. in 1839.
 Re-surveyed by Robert Clark Jr. D.S. in 1859.
 Re-measurements by Orange Euden D.S. in 1867.

The above map of Township 17 6 S. E. of Range 17 E. East
 of the Michigan Meridian Michigan, is hereby confirmed to the field
 notes of the survey filed on file in this office, which have been examined
 and approved.
 Surveyor General's Office
 Detroit May 29, 1880

Wm. H. H.
 Surveyor General

Township N^o 6 South, Range N^o 7 East.

Mer.



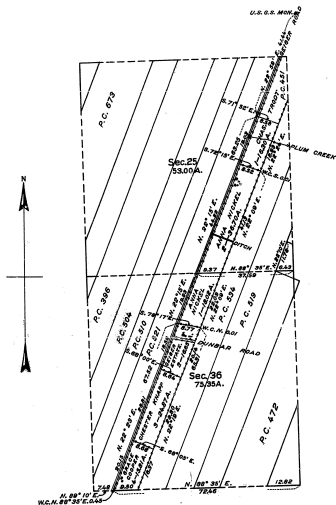
Surveyed in 1874 by _____
Signed Surveyor _____

I certify that the contents of this report of the
Field Office
Survey of Township N^o 6 South, Range N^o 7 East, Meridian
are correct.

From 1874 to 1875
41 M.C.
Receipts and paid 1874
to 1875 6.11 - 1874 1875

TOWNSHIP NO. 6 SOUTH, RANGE NO. 7 EAST, MICHIGAN MERIDIAN, MICHIGAN.
 SUPPLEMENTAL PLAT, SECTIONS 25 AND 36.

31-28
 31-28



MEMORANDUM.

THIS PLAT DELINEATES THE DEPENDENT RESURVEY OF PORTIONS OF THE BOUNDARIES OF SECTION 36, AND OF PRIVATE LAND CLAIMS NOS. 481, 521, AND 534, AND THE SUBDIVISION OF PUBLIC LAND AREAS IN SECTIONS 25 AND 36, DERIVING LOTTINGS OF FRACTIONAL AREAS TO ACCOMMODATE APPLICATION E. L. O. 27054, AND OTHER CLAIMS AS OCCUPIED, EXECUTED BY HAL D. CRAIG, SURVEYOR, FROM MAY 31 TO JUNE 9, 1938, UNDER SPECIAL INSTRUCTIONS FOR GROUP NO. 43, DATED APRIL 29, 1938, AUTHORIZED BY GENERAL LAND OFFICE LETTER "M" DATED MARCH 25, 1938.

THE PRIVATE LAND CLAIMS WERE SURVEYED BY AARON GREELY, SURVEYOR OF PRIVATE CLAIMS, IN 1809 AND 1810. THE SUBDIVISIONAL SURVEYS WERE EXECUTED BY JOSEPH FLETCHER, DEPUTY SURVEYOR, IN 1815, AS SHOWN UPON THE PLAT APPROVED NOVEMBER 5, 1815. A PORTION OF THE PRIVATE LAND CLAIM BOUNDARIES AND ADJOINING TOWNSHIP BOUNDARIES AND SECTION LINES WERE RESURVEYED BY ORANGE HISSON, DEPUTY SURVEYOR, IN 1846 AND 1847, AS SHOWN UPON THE PLAT APPROVED MAY 29, 1850.

NOTE: THE LAND INCLUDED IN THE PRESENT SURVEY IS PRACTICALLY LEVEL AND IS ALL UNDER CULTIVATION EXCEPT THE YARDS AT THE BUILDING SITES.

OFFICE OF THE SUPERVISOR OF SURVEYS,
 DENVER, COLORADO, DECEMBER 30, 1938.

THE ABOVE SUPPLEMENTAL PLAT OF SECTIONS 25 AND 36, TOWNSHIP NO. 6 SOUTH, RANGE NO. 7 EAST, MICHIGAN MERIDIAN, MICHIGAN, IS STRICTLY CONFORMABLE TO THE FIELD NOTES OF THE SURVEY THEREOF, WHICH HAVE BEEN EXAMINED AND APPROVED.

Samuel Hanna
 SUPERVISOR OF SURVEYS.

SCALE: 20 CHAINS TO AN INCH.

AREA RESURVEYED, 128.35 ACRES.

LINES DESIGNATED	BY WHOM SURVEYED	GROUP NO.	DATE	WILIEAGE		WHEN SURVEYED	
				MLS.	CHS.	BEGUN	COMPLETED
EXTERIOR	HAL D. CRAIG SURVEYOR	43	APRIL 29, 1938.	1	79.87	MAY 31, 1938.	JUNE 9, 1938.
SUBDIVISIONAL				0	37.59		
MISCELLANEOUS				4	74.63		

UNITED STATES
 DEPARTMENT OF THE INTERIOR
 GENERAL LAND OFFICE.

WASHINGTON, D. C., JANUARY 30, 1939

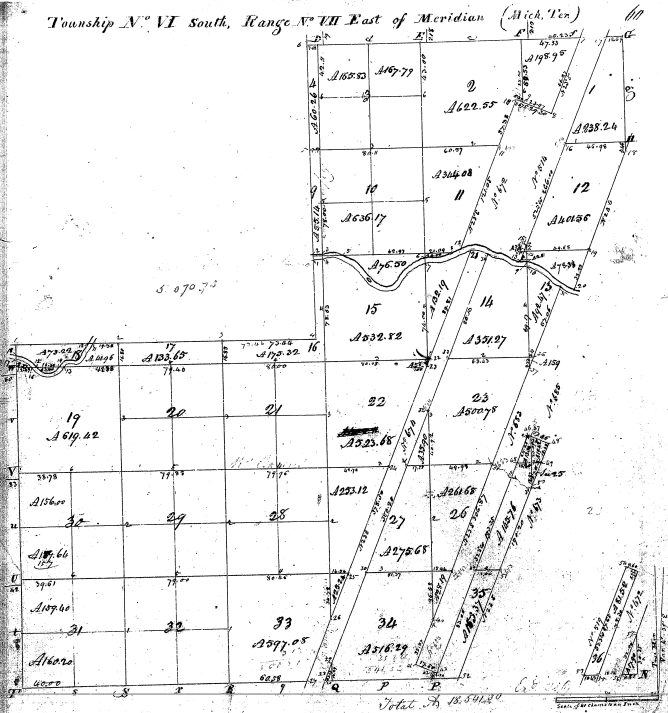
THE SURVEY REPRESENTED BY THIS PLAT, HAVING BEEN CORRECTLY EXECUTED IN ACCORDANCE WITH THE REQUIREMENTS OF LAW AND THE REGULATIONS OF THIS OFFICE, IS HEREBY ACCEPTED.

Carlton F. Smith
 ASSISTANT COMMISSIONER.

Township N. VI South, Range N. III East of Meridian (Mich. Ten)

31-28

31-28

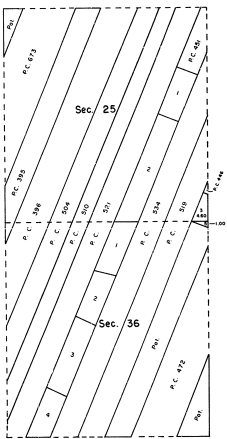


Pursuant to a contract with and instructions from Edward Tiffin, Surveyor General of the United States bearing date the 25th day of April 1854, I have administered said contract and surveyed the above Township, and I do hereby certify that it has been measured and found both actual and artificial as are represented on said plat and described in the field notes made thereby and returned with said plat into the Surveyor General's Office. Witness this 25th day of April 1854.

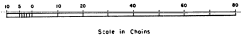
J. J. Collins

3/1-2060

TOWNSHIP 6 SOUTH, RANGE 7 EAST, MICHIGAN MERIDIAN, MICHIGAN
 SUPPLEMENTAL PLAT



This plat, showing lot numbers and acreages for areas not given designations on previous plate, is based upon the plat dated November 5, 1883, and the plate approved May 29, 1890, and December 30, 1938.



UNITED STATES DEPARTMENT OF THE INTERIOR
 BUREAU OF LAND MANAGEMENT
 Washington, D. C. December 16, 1968

This plat, showing new lottings, is based upon the official records, and having been correctly prepared in accordance with the regulations, is hereby accepted.

For the Director

R. L. Bacon

Chief, Division of Engineering