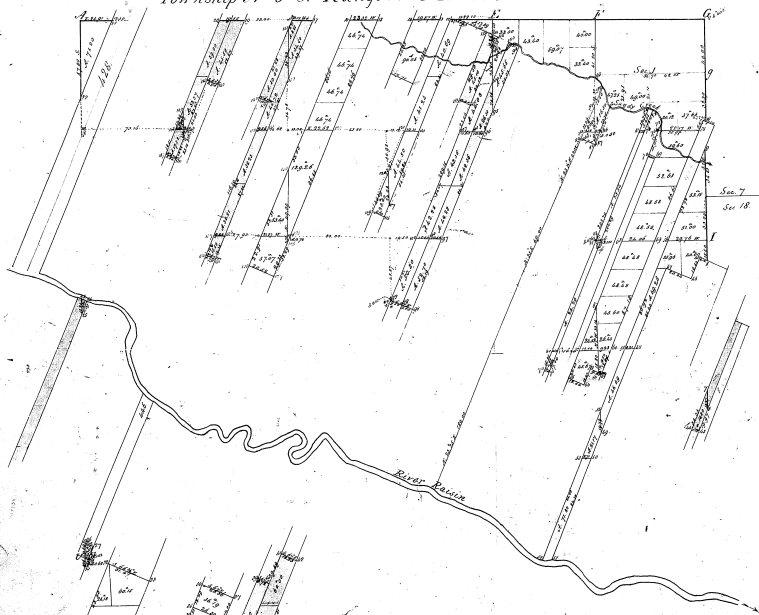


Township N^o 6 S. Range N^o 8 E. Mer. Mich.



31-29

31-29

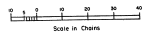
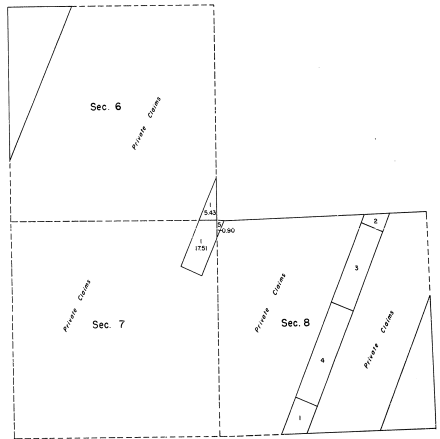
Original Surveys made by Joseph Belcher Dep. Sur^t in 1827
 Remeasured by Orange Easton D.S. in 1867
 Additional data by E. Tolford D.S. in 1869

The above Map of Township N^o 6 South of Range N^o 8 East
 of the Principal Meridian, Michigan is strictly conformable to the
 field notes of the survey thereof, which have been examined and
 approved.
 Charles Bennett Officer,
 Detroit May 29 1880

Charles H. H. H.
 Surveyor General

TOWNSHIP 6 SOUTH, RANGE 8 EAST, MICHIGAN MERIDIAN, MICHIGAN
 SUPPLEMENTAL PLAT, SECTIONS 6, 7 AND 8

31-29



This supplemental plat of sections 6, 7, and 8, providing lot numbers for areas which were not given designations on previous plats, is based on the plats approved May 29, 1890, and November 20, 1942.

UNITED STATES DEPARTMENT OF THE INTERIOR
 BUREAU OF LAND MANAGEMENT
 Washington, D. C. November 9, 1966

This plat, showing amended lotting, is based upon the official records, and having been correctly prepared in accordance with the regulations, is hereby accepted.

For the Director

E. J. [Signature]
 Chief, Division of Engineering

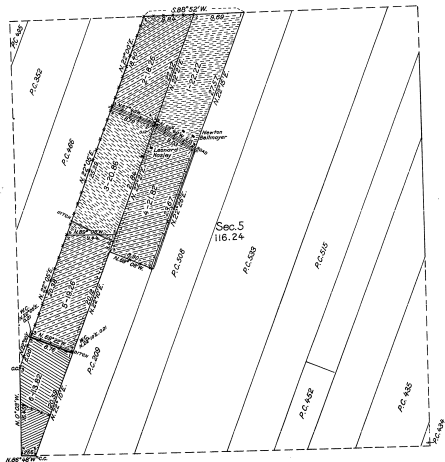
TOWNSHIP No. 6 SOUTH, RANGE No. 8 EAST, OF THE MICHIGAN MERIDIAN, MICHIGAN

SUPPLEMENTAL PLAT OF SECTION 5

Scale: 10 chains to an inch

31-21

31-21



MEMORANDUM
 THIS PLAT DELINEATES THE DEPENDENT RESURVEY OF PORTIONS OF THE BOUNDARIES OF SECTION 5, AND OF PRIVATE LAND CLAIMS NOS. 209, 466, AND 508, AND THE SUBDIVISION OF PUBLIC LAND AREAS IN SECTION 5, DERIVING LOTS INTO FRACTIONAL AREAS TO ACCOMMODATE APPLICATION G.L.C. 03091, EXECUTED BY GUY R. VEAL, U.S. CADASTRAL ENGINEER, FROM OCTOBER 15 TO 20, 1931, UNDER SPECIAL INSTRUCTIONS FOR GROUP NO. 28, DATED AUGUST 11, 1931, AUTHORIZED BY THE COMMISSIONER'S LETTER "E" DATED APRIL 17, 1931.

THE PRIVATE LAND CLAIMS WERE SURVEYED BY AARON GREELEY, SURVEYOR OF PRIVATE CLAIMS, IN 1810. THE NORTH BOUNDARY WAS SURVEYED BY ALEX HOLMES, D.S., IN 1815. THE SUBDIVISIONAL SURVEYS WERE EXECUTED BY JOSEPH FLETCHER, D.S., IN 1817, AS SHOWN UPON THE PLAT APPROVED FEBRUARY 20, 1818. THE SUBDIVISIONAL LINES AND THE BOUNDARIES OF THE ADJACENT PRIVATE LAND CLAIMS WERE RESURVEYED BY ORANGE RISDON, D.S., IN 1847, AND R. TULFORD, D.S., IN 1849, AS SHOWN UPON THE PLAT APPROVED MAY 29, 1850.

OFFICE OF U.S. SUPERVISOR OF SURVEYS
 DENVER, COLORADO, MARCH 10, 1932.

THE ABOVE SUPPLEMENTAL PLAT OF SECTION 5, TOWNSHIP NO. 6 SOUTH, RANGE NO. 8 EAST, OF THE MICHIGAN MERIDIAN, MICHIGAN, IS STRICTLY CONFORMABLE TO THE FIELD NOTES OF THE SURVEY THEREOF WHICH HAVE BEEN EXAMINED AND APPROVED.

Samuel H. Hume
 U.S. SUPERVISOR OF SURVEYS

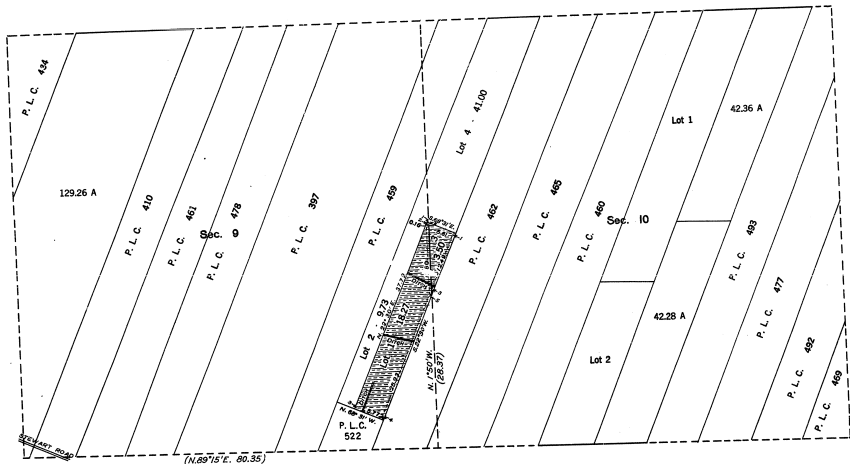
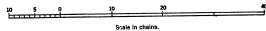
DEPARTMENT OF THE INTERIOR
 GENERAL LAND OFFICE
 WASHINGTON, D.C., MARCH 28, 1932.

THE SURVEY REPRESENTED BY THIS PLAT HAVING BEEN CORRECTLY EXECUTED IN ACCORDANCE WITH THE REQUIREMENTS OF LAW AND THE REGULATIONS OF THIS OFFICE, IS HEREBY APPROVED.

Oliver Samuel
 ASSISTANT COMMISSIONER.

TOWNSHIP 6 SOUTH, RANGE 8 EAST, OF THE MICHIGAN MERIDIAN, MICHIGAN

SUBDIVISION OF PUBLIC LAND, SECS. 9 AND 10



Macro-survey

This plat delineates a retracement and reestablishment of a portion of the boundaries of private land claims and subdivision lines as shown upon the plat approved May 29, 1865, in their true original positions according to the best available evidence of the position of the original lines and corners, and the subdivision of public land areas to accommodate application G. L. O. 010638.

The survey was authorized by General Land Office memorandum G. L. O. 010638 "E" dated April 10, 1946.

Surveyed by Joseph C. Thoms, Cadastre Engineer, from August 9 to 22, 1946, under special instructions for Group 64, Michigan, dated April 23, 1946.

UNITED STATES DEPARTMENT OF THE INTERIOR
BUREAU OF LAND MANAGEMENT

Denver, Colorado, April 18 1947

This plat is strictly conformable to the field notes of the survey which have been examined and approved.

Washington, D. C., June 2, 1947

The survey represented by this plat, having been correctly executed in accordance with the requirements of law and the regulations of this office, is hereby accepted.

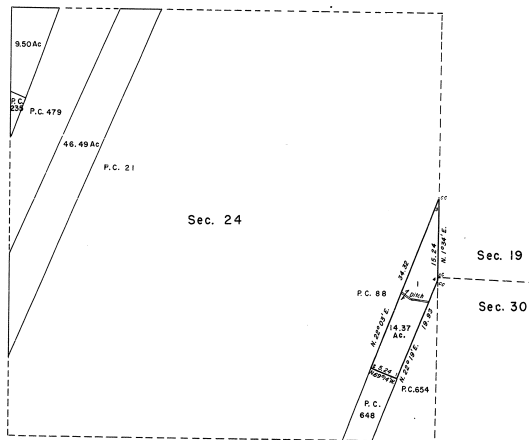
Joseph C. Thoms
Acting Chief Cadastre Engineer.

John C. Stewart
Assistant Director

21-1-19(10)

TOWNSHIP 6 SOUTH, RANGE 8 EAST, MICHIGAN MERIDIAN, MICHIGAN
 LIMITED DEPENDENT RESURVEY, SECTION 24

31-29 ©



This plat represents the retracement and reestablishment of the boundaries of the 14.80 acre tract of public land in sec. 24, as shown upon the plat approved May 29, 1850, in their true original positions according to the best available evidence of the position of the original corners.

Surveyed by Hugh B. Crawford, Cadastral Engineer, on September 14 to 20, 1934, under Supplemental Special Instructions dated August 12, 1904 and Special Instructions dated September 14, 1933, for Group 01, Michigan.



Scale in Chains
 Area resurveyed: 14.37 acres

Sec. 19
 Sec. 30

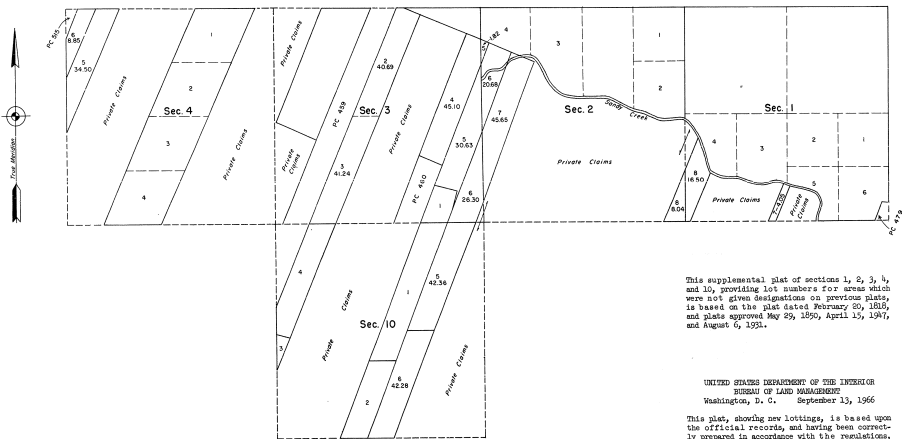
UNITED STATES DEPARTMENT OF THE INTERIOR
 BUREAU OF LAND MANAGEMENT
 Washington, D. C. July 29, 1935

This plat is strictly conformable to the approved field notes, and the survey, having been correctly executed in accordance with the requirements of law and the regulations of this Bureau, is hereby accepted.

For the Director
Hugh B. Crawford
 Cadastral Engineering Staff Officer

31-29

TOWNSHIP 6 SOUTH, RANGE 8 EAST, MICHIGAN MERIDIAN, MICHIGAN
 SUPPLEMENTAL PLAT



This supplemental plat of sections 1, 2, 3, 4, and 10, providing lot numbers for acres which were not given designations on previous plats, is based on the plat dated February 20, 1915, and plats approved May 29, 1950, April 15, 1971, and August 6, 1971.

UNITED STATES DEPARTMENT OF THE INTERIOR
 BUREAU OF LAND MANAGEMENT
 Washington, D. C. September 13, 1966

This plat, showing new lottings, is based upon the official records, and having been correctly prepared in accordance with the regulations, is hereby accepted.

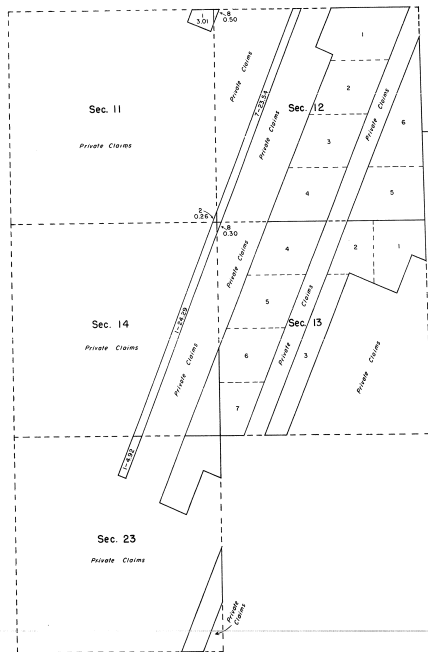
For the Director

Mike J. Summ

Acting Chief, Division of Engineering

3/1/79

TOWNSHIP 6 SOUTH, RANGE 8 EAST, MICHIGAN MERIDIAN, MICHIGAN
 SUPPLEMENTAL PLAT



This supplemental plat of sections 11, 12, 13, 14, and 23, providing lot numbers for areas which were not given designations on previous plats, is based on the plat dated February 20, 1858, and the plat approved May 25, 1850.

31-27

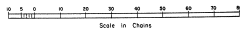
UNITED STATES DEPARTMENT OF THE INTERIOR
 BUREAU OF LAND MANAGEMENT
 Washington, D. C. September 13, 1966

This plat, showing new lottings, is based upon the official records, and having been correctly prepared in accordance with the regulations, is hereby accepted.

For the Director

Clark F. Humm

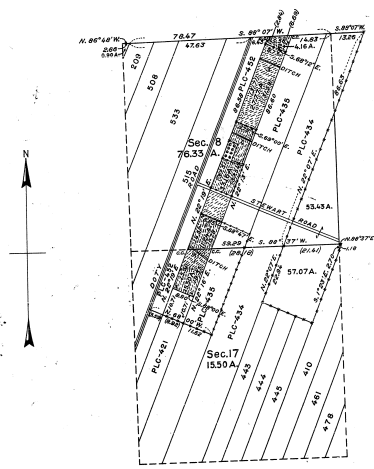
Acting Chief, Division of Engineering



TOWNSHIP NO.6 SOUTH, RANGE NO.8 EAST, OF THE MICHIGAN MERIDIAN, MICHIGAN.
 DEPENDENT RESURVEY AND SUBDIVISION OF PUBLIC LAND,
 SECTIONS 8 AND 17.

31-29

31-29
 10



MEMORANDUM.

THIS PLAT OF T. 6 S., R. 8 E., DELINEATES THE RETRACEMENT AND REESTABLISHMENT OF PORTIONS OF THE SUBDIVISIONAL LINES OF THE TOWNSHIP AND OF THE BOUNDARIES OF PRIVATE LAND CLAIMS NOS. 431, 435, AND 452, AS SHOWN ON THE PLATS APPROVED FEBRUARY 20, 1819, AND MAY 29, 1850, IN THEIR TRUE ORIGINAL POSITIONS ACCORDING TO THE BEST AVAILABLE EVIDENCE OF THE POSITION OF THE ORIGINAL CORNERS. ALL DIFFERENCES BETWEEN THE MEASUREMENTS SHOWN ON THE ORIGINAL PLATS AND THOSE DERIVED IN THE RETRACEMENT HAVE BEEN DISTRIBUTED PROPORTIONALLY BETWEEN ACCEPTED CORNERS IN ACCORDANCE WITH SURVEYING RULES. THE PLAT ALSO REPRESENTS THE SUBDIVISION OF PUBLIC LAND AREAS TO ACCOMMODATE APPLICATION G. L. O. 08574, AND ACCORDING TO THE PRESENT CLAIMS AND OCCUPANCY.

THE SURVEY WAS EXECUTED PURSUANT TO AUTHORITY CONTAINED IN OFFICE LETTER G. L. O. 08574 "E" DATED OCTOBER 2, 1941.

UNITED STATES DEPARTMENT OF THE INTERIOR
 GENERAL LAND OFFICE

DENVER, COLORADO, NOVEMBER 20, 1942.

WASHINGTON, D. C., DECEMBER 31, 1942.

THIS PLAT OF SECTIONS 8 AND 17, TOWNSHIP NO. 6 SOUTH, RANGE NO. 8 EAST, MICHIGAN MERIDIAN, STATE OF MICHIGAN, IS STRICTLY CONFORMABLE TO THE FIELD NOTES OF THE RESURVEY THEREOF, WHICH HAVE BEEN EXAMINED AND APPROVED.

THE RESURVEY REPRESENTED BY THIS PLAT, HAVING BEEN CORRECTLY EXECUTED IN ACCORDANCE WITH THE REQUIREMENTS OF LAW AND THE REGULATIONS OF THIS OFFICE, IS HEREBY ACCEPTED.

James H. Dorman
 SUPERVISOR OF SURVEYS.

Joel David Hoffman
 ASSISTANT COMMISSIONER.

SCALE: 1 INCH EQUALS 20 CHAINS.

AREA RESURVEYED, 91.83 ACRES.

LINES DESIGNATED BY WHOM SURVEYED	GROUP NO	DATE OF		WHEN SURVEYED	
		SPECIAL INSTRUCTIONS	BEGUN	COMPLETED	
SUBDIVISIONAL WIDELL-ARCBOUS	49	HAL D. CRAIG	OCTOBER 14, 1941.	OCTOBER 29, 1941.	JUNE 3, 1942.

M. W. R.