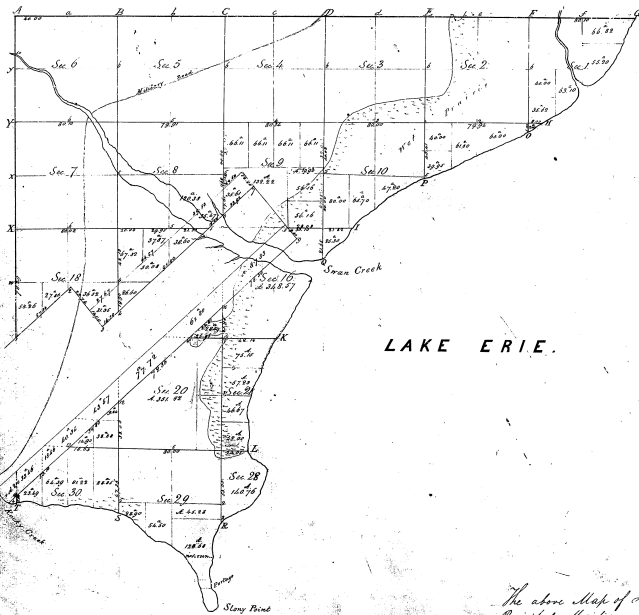


32-40
32-40

Proceeded to a contract with, and instructions from Edward Coffey Surveyor General of the United States, bearing date the _____ day of _____ 1867, I have examined said plat and surveyed the above described Township of land, and do hereby certify that it has been marked and bounded, and the same is correct and conformable to a plat here and described in the field notes made thereon, and returned with the plat into the Surveyor General's office - Witness my hand the _____ day of _____ 1867.

J. H. T. T. T. (P. S.)

Township N° 6 S. Range N° 10 E. Mer. Mich.



LAKE ERIE.

Original survey made by Joseph Fletcher D.S. in 1817
 Remasurments found & Claims by Muller

The above Map of Township N° 6 South, Range N° 10 East of the
 Principal Meridian, Michigan is strictly conformable to the field notes
 of the survey thereof on file in this Office, which have been examined
 and approved.
 Surveyor General's Office,
 Detroit, May 29 1830

Amos A. Phelps
 Surveyor General

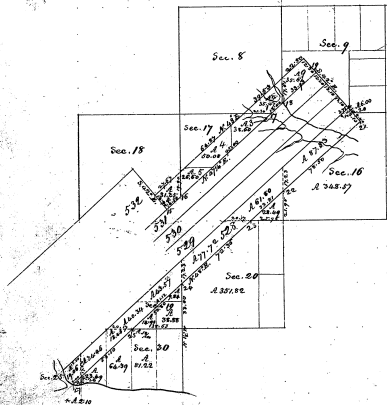
1st 1/2 Sec 10
 1/2 Sec 11
 1/2 Sec 12

32-4
 80
 97-26

Township N^o 6 S. Range N^o 10 E. (Misc.) Mer.

3340

32-40



Directed in all by _____ Deputy Surveyor

I certify that the above is a true copy of the
plans on file
Stump General Office