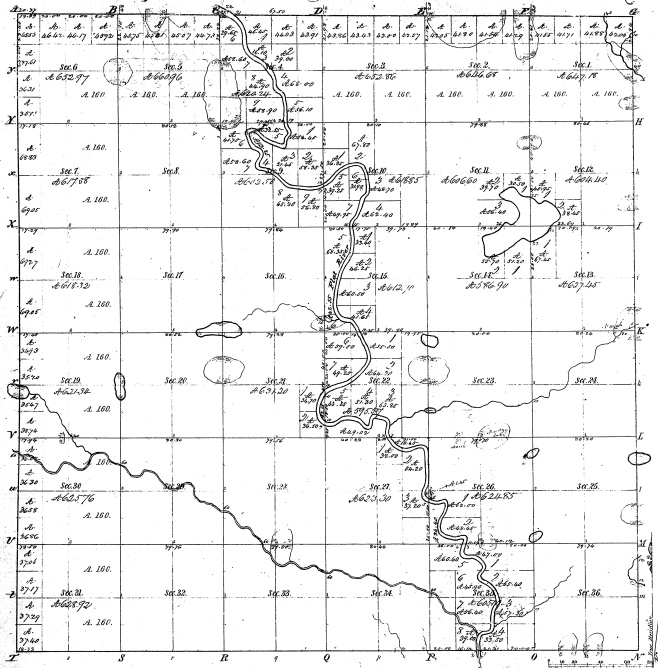


Township N. 9 N., Range N. 8 West Mer. (Mich)



Municipality of Flat-Rock, Mich.									
Part	Course	Dist.	Part	Course	Dist.	Part	Course	Dist.	Part
1	N 74° 30' W	11.00	1	S 74° 30' E	11.00	1	N 74° 30' W	11.00	1
2	S 74° 30' E	11.00	2	N 74° 30' W	11.00	2	S 74° 30' E	11.00	2
3	N 74° 30' W	11.00	3	S 74° 30' E	11.00	3	N 74° 30' W	11.00	3
4	S 74° 30' E	11.00	4	N 74° 30' W	11.00	4	S 74° 30' E	11.00	4
5	N 74° 30' W	11.00	5	S 74° 30' E	11.00	5	N 74° 30' W	11.00	5
6	S 74° 30' E	11.00	6	N 74° 30' W	11.00	6	S 74° 30' E	11.00	6
7	N 74° 30' W	11.00	7	S 74° 30' E	11.00	7	N 74° 30' W	11.00	7
8	S 74° 30' E	11.00	8	N 74° 30' W	11.00	8	S 74° 30' E	11.00	8
9	N 74° 30' W	11.00	9	S 74° 30' E	11.00	9	N 74° 30' W	11.00	9
10	S 74° 30' E	11.00	10	N 74° 30' W	11.00	10	S 74° 30' E	11.00	10
11	N 74° 30' W	11.00	11	S 74° 30' E	11.00	11	N 74° 30' W	11.00	11
12	S 74° 30' E	11.00	12	N 74° 30' W	11.00	12	S 74° 30' E	11.00	12
13	N 74° 30' W	11.00	13	S 74° 30' E	11.00	13	N 74° 30' W	11.00	13
14	S 74° 30' E	11.00	14	N 74° 30' W	11.00	14	S 74° 30' E	11.00	14
15	N 74° 30' W	11.00	15	S 74° 30' E	11.00	15	N 74° 30' W	11.00	15
16	S 74° 30' E	11.00	16	N 74° 30' W	11.00	16	S 74° 30' E	11.00	16
17	N 74° 30' W	11.00	17	S 74° 30' E	11.00	17	N 74° 30' W	11.00	17
18	S 74° 30' E	11.00	18	N 74° 30' W	11.00	18	S 74° 30' E	11.00	18
19	N 74° 30' W	11.00	19	S 74° 30' E	11.00	19	N 74° 30' W	11.00	19
20	S 74° 30' E	11.00	20	N 74° 30' W	11.00	20	S 74° 30' E	11.00	20
21	N 74° 30' W	11.00	21	S 74° 30' E	11.00	21	N 74° 30' W	11.00	21
22	S 74° 30' E	11.00	22	N 74° 30' W	11.00	22	S 74° 30' E	11.00	22
23	N 74° 30' W	11.00	23	S 74° 30' E	11.00	23	N 74° 30' W	11.00	23
24	S 74° 30' E	11.00	24	N 74° 30' W	11.00	24	S 74° 30' E	11.00	24
25	N 74° 30' W	11.00	25	S 74° 30' E	11.00	25	N 74° 30' W	11.00	25
26	S 74° 30' E	11.00	26	N 74° 30' W	11.00	26	S 74° 30' E	11.00	26
27	N 74° 30' W	11.00	27	S 74° 30' E	11.00	27	N 74° 30' W	11.00	27
28	S 74° 30' E	11.00	28	N 74° 30' W	11.00	28	S 74° 30' E	11.00	28
29	N 74° 30' W	11.00	29	S 74° 30' E	11.00	29	N 74° 30' W	11.00	29
30	S 74° 30' E	11.00	30	N 74° 30' W	11.00	30	S 74° 30' E	11.00	30
31	N 74° 30' W	11.00	31	S 74° 30' E	11.00	31	N 74° 30' W	11.00	31
32	S 74° 30' E	11.00	32	N 74° 30' W	11.00	32	S 74° 30' E	11.00	32
33	N 74° 30' W	11.00	33	S 74° 30' E	11.00	33	N 74° 30' W	11.00	33
34	S 74° 30' E	11.00	34	N 74° 30' W	11.00	34	S 74° 30' E	11.00	34
35	N 74° 30' W	11.00	35	S 74° 30' E	11.00	35	N 74° 30' W	11.00	35
36	S 74° 30' E	11.00	36	N 74° 30' W	11.00	36	S 74° 30' E	11.00	36

Total number of Acres 20,652.53				
Survey Designated	By Whom Surveyed	Date of Contract	Amount of Survey	When Surveyed
Township lines	A. C. ...	1836	36.00	1837
Subdivisions	A. C. ...	1836	20,616.53	1837

The above map of Township N. 9 North of Range N. 8 West of the Principal Meridian Michigan is a survey done on file in the office of the Surveyor General's Office, East Lansing, March 2, 1839.

*[Signature]*