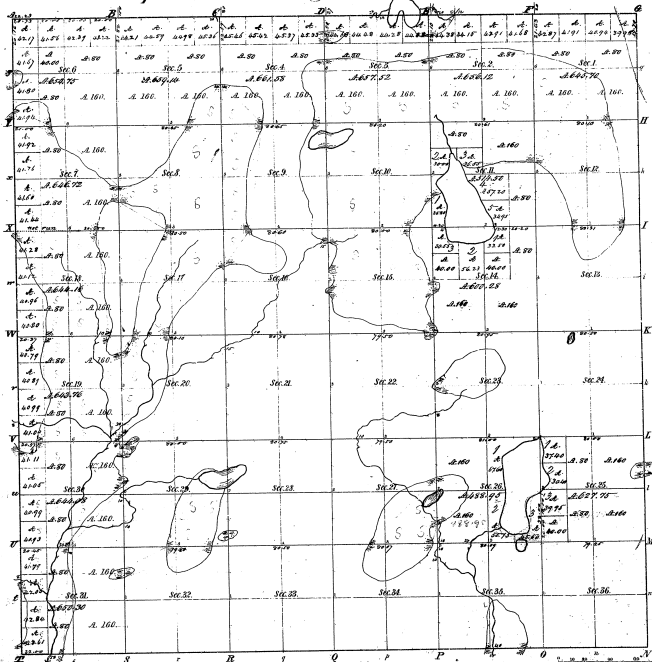


Township N^o 11 N., Range N^o 8 West Mer. (Mich.)



Measure of Acres			
Section	Acres	Section	Acres
1	36.00	17	36.00
2	36.00	18	36.00
3	36.00	19	36.00
4	36.00	20	36.00
5	36.00	21	36.00
6	36.00	22	36.00
7	36.00	23	36.00
8	36.00	24	36.00
9	36.00	25	36.00
10	36.00	26	36.00
11	36.00	27	36.00
12	36.00	28	36.00
13	36.00	29	36.00
14	36.00	30	36.00
15	36.00	31	36.00
16	36.00	32	36.00
17	36.00	33	36.00
18	36.00	34	36.00
19	36.00	35	36.00
20	36.00	36	36.00

11-3

11-37

Total number of Acres 22,855.74

Survey	By Whom Surveyed	Date of Contract	Amount of Survey	When Surveyed	How Made and by Whom
Township 11 N.	John A. Nelson	Aug. 12, 1853	36.00	1857	by Nelson
Section 1, 2, 3, 4, 5, 6, 7, 8, 9, 10, 11, 12, 13, 14, 15, 16, 17, 18, 19, 20, 21, 22, 23, 24, 25, 26, 27, 28, 29, 30, 31, 32, 33, 34, 35, 36	J. B. Campbell	Oct. 31, 1856	22,819.74	1857	by Campbell

The above map of Township N^o 11 North of Range N^o 8 West of the Principal Meridian Michigan is a true and correct copy of the original survey as filed in the Office which has been examined and approved.

Surveyor General's Office
Ann Arbor, Mich. 24th Dec. 1857

J. B. Campbell