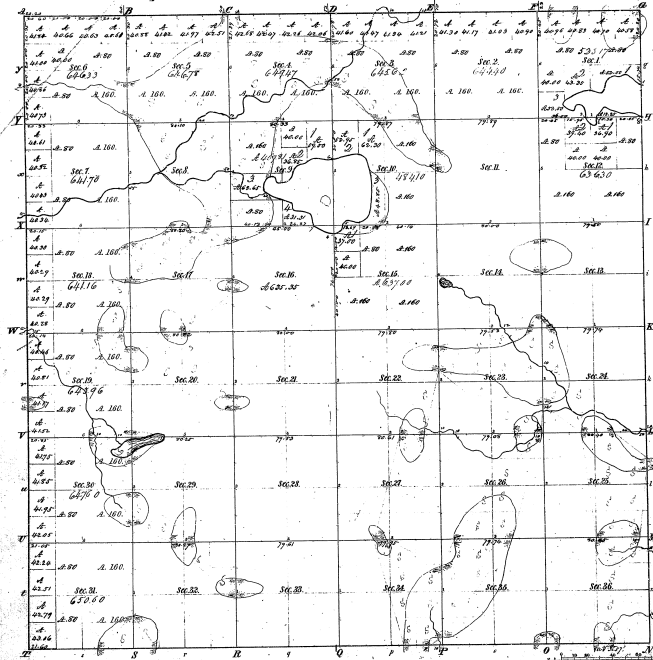


Township N<sup>o</sup> 12 N, Range N<sup>o</sup> 8 West Mer. (Mich.)



Members of Townships

Final Course	1842	Final Course	1842	Final Course	1842
1	63450	1	63450	1	63450
2	63450	2	63450	2	63450
3	63450	3	63450	3	63450
4	63450	4	63450	4	63450
5	63450	5	63450	5	63450
6	63450	6	63450	6	63450
7	63450	7	63450	7	63450
8	63450	8	63450	8	63450
9	63450	9	63450	9	63450
10	63450	10	63450	10	63450
11	63450	11	63450	11	63450
12	63450	12	63450	12	63450
13	63450	13	63450	13	63450
14	63450	14	63450	14	63450
15	63450	15	63450	15	63450
16	63450	16	63450	16	63450
17	63450	17	63450	17	63450
18	63450	18	63450	18	63450
19	63450	19	63450	19	63450
20	63450	20	63450	20	63450
21	63450	21	63450	21	63450
22	63450	22	63450	22	63450
23	63450	23	63450	23	63450
24	63450	24	63450	24	63450
25	63450	25	63450	25	63450
26	63450	26	63450	26	63450
27	63450	27	63450	27	63450
28	63450	28	63450	28	63450
29	63450	29	63450	29	63450
30	63450	30	63450	30	63450
31	63450	31	63450	31	63450
32	63450	32	63450	32	63450
33	63450	33	63450	33	63450
34	63450	34	63450	34	63450
35	63450	35	63450	35	63450
36	63450	36	63450	36	63450

Total number of Acres 20 643.35

Survey Designated	By Whom Surveyed	Date of Contract	Amount of Surveyed	When Surveyed
1	A. R. ...	1837	...	...
2	A. R. ...	1837	...	...
3	A. R. ...	1837	...	...

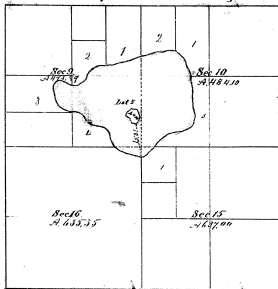
The above Map of Township N<sup>o</sup> 12 N, Range N<sup>o</sup> 8 West & Mer. of Mich. is a true and correct copy of the original survey and is approved by the Surveyor General for the State of Michigan.

Surveyor General's Office  
 Lansing, Mich. July 18 1837

July 12 1837

1837

Township 12 North Range 8 West Michigan



Meanders of Island	
4606	130
4166	250
1157	250
0908	400
5636	280
8108	220
8216	290
8676	220
8856	180

Surveyed by James W. Rankin Del. 20th  
on 24<sup>th</sup> of 22<sup>nd</sup> of 1855

General Land Office  
Washington D.C. 20540-565

The above diagram of Island in Lake in Sec  
9, 10, 15 & 16 T. 12 N. R. 8 W. Michigan, is  
correctly conformable to the field notes and  
filed in the office which have been examined  
and approved

*J. J. Walker*  
Commissioner

263335