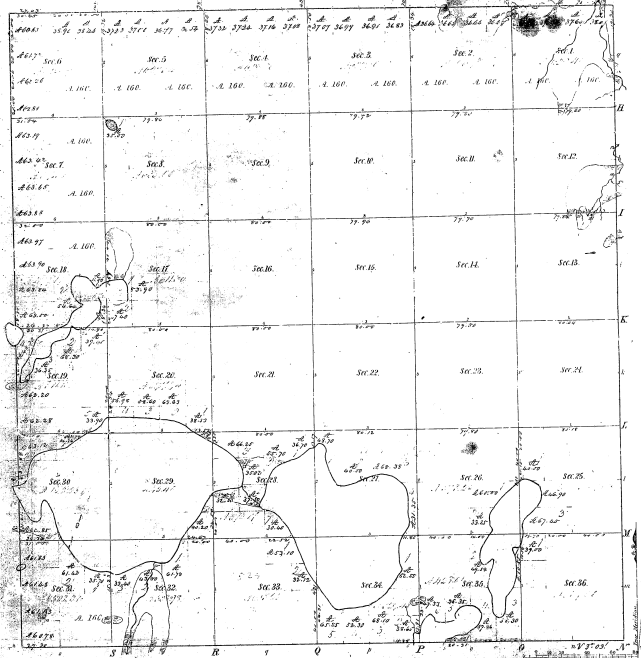


Township 1° 29' N. Range 1° E. Mer. Mich.



Members of Board of Supervisors

Year	Name	Year	Name	Year	Name
1850	...	1851	...	1852	...
1853	...	1854	...	1855	...
1856	...	1857	...	1858	...
1859	...	1860	...	1861	...
1862	...	1863	...	1864	...
1865	...	1866	...	1867	...
1868	...	1869	...	1870	...
1871	...	1872	...	1873	...
1874	...	1875	...	1876	...
1877	...	1878	...	1879	...
1880	...	1881	...	1882	...
1883	...	1884	...	1885	...
1886	...	1887	...	1888	...
1889	...	1890	...	1891	...
1892	...	1893	...	1894	...
1895	...	1896	...	1897	...
1898	...	1899	...	1900	...

Total number of Acres 3600

Survey Designated	By Whom Surveyed	Date of Contract	Amount of Survey	When Surveyed	By Whom
...
...
...

The above is a true and correct copy of the original map of the Township of ... a county of ... in the State of Michigan, which has been examined and approved by the Board of Supervisors of the Township of ...

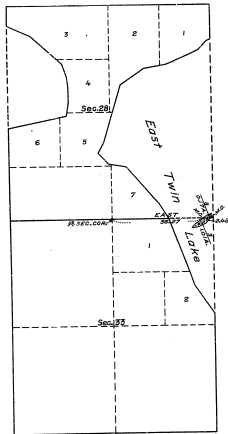
Superior General Office
 ...
 ...

Year	Name	Year	Name
1850	...	1851	...
1852	...	1853	...
1854	...	1855	...
1856	...	1857	...
1858	...	1859	...
1860	...	1861	...
1862	...	1863	...
1864	...	1865	...
1866	...	1867	...
1868	...	1869	...
1870	...	1871	...
1872	...	1873	...
1874	...	1875	...
1876	...	1877	...
1878	...	1879	...
1880	...	1881	...
1882	...	1883	...
1884	...	1885	...
1886	...	1887	...
1888	...	1889	...
1890	...	1891	...
1892	...	1893	...
1894	...	1895	...
1896	...	1897	...
1898	...	1899	...
1900

Plat of an Island in East Twin Lake, Secs. 28 and 33, T.29 N. R. 1 E., Mich. Mer., Michigan.

21-8

21-8



LEGEND.

SCALE, 1 INCH = 20 CHAINS.

SURVEYED BY WILLIS W. BARDY, U. S. SURVEYOR, ON AUGUST 25, 1927, UNDER SPECIAL INSTRUCTIONS FOR GROUP NO. 16, MICHIGAN, DATED MAY 26, 1927, ISSUED BY ARTHUR D. KIDDER, ASSOCIATE SUPERVISOR OF SURVEYS, WHICH WERE APPROVED BY THE COMMISSIONER OF THE GENERAL LAND OFFICE ON JUNE 1, 1927.

AREA OF LANDS SURVEYED = 1.18 ACRES, NOT SHOWN UPON THE ORIGINAL PLAT APPROVED NOVEMBER 14, 1840.

AREAS OF PREVIOUSLY SURVEYED LANDS NOT SHOWN.

OFFICE OF U. S. SUPERVISOR OF SURVEYS.
DENVER, COLORADO, MARCH 31, 1928.

THE ABOVE PLAT OF AN ISLAND IN EAST TWIN LAKE IN SECTIONS 28 AND 33, TOWNSHIP NO. 29 NORTH, RANGE NO. 1 EAST, OF THE MICHIGAN MERIDIAN, IN THE STATE OF MICHIGAN, IS STRICTLY CONFORMABLE TO THE FIELD NOTES OF THE SURVEY THEREOF, WHICH HAVE BEEN EXAMINED AND APPROVED.

Wm. C. O'Connell
U. S. SUPERVISOR OF SURVEYS.

DEPARTMENT OF THE INTERIOR.
GENERAL LAND OFFICE.

WASHINGTON, D. C., JUNE 28, 1928.

THE SURVEY REPRESENTED BY THIS PLAT, HAVING BEEN CORRECTLY EXECUTED IN ACCORDANCE WITH THE REQUIREMENTS OF LAW AND THE REGULATIONS OF THIS OFFICE, IS HEREBY ACCEPTED.

Wm. C. O'Connell
ASSISTANT COMMISSIONER.