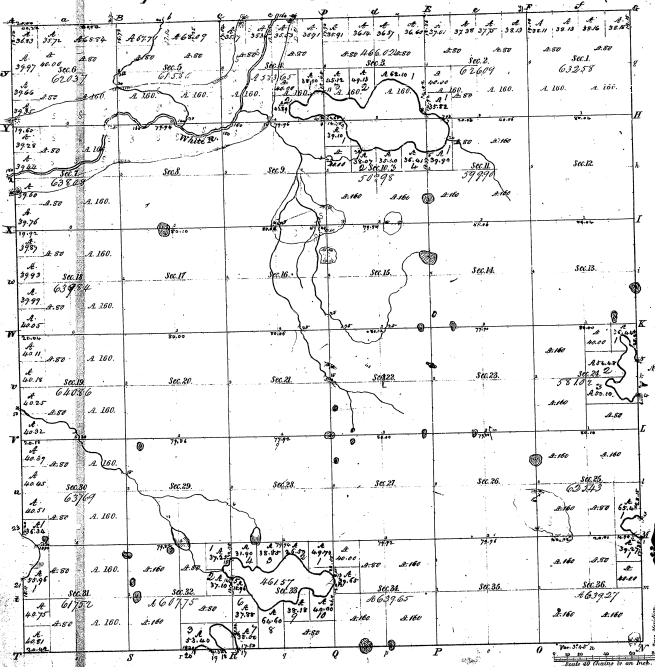


Township No. 12 N. Range No. 16 West Mer. (Mich.) 10-33



Municipality of Lake City.		Municipality of Lake City.		Municipality of Lake City.	
Part	Course	Area	Part	Course	Area
1	177° 30'	2.57	177° 30'	2.57	177° 30'
2	177° 30'	2.57	177° 30'	2.57	177° 30'
3	177° 30'	2.57	177° 30'	2.57	177° 30'
4	177° 30'	2.57	177° 30'	2.57	177° 30'
5	177° 30'	2.57	177° 30'	2.57	177° 30'
6	177° 30'	2.57	177° 30'	2.57	177° 30'
7	177° 30'	2.57	177° 30'	2.57	177° 30'
8	177° 30'	2.57	177° 30'	2.57	177° 30'
9	177° 30'	2.57	177° 30'	2.57	177° 30'
10	177° 30'	2.57	177° 30'	2.57	177° 30'
11	177° 30'	2.57	177° 30'	2.57	177° 30'
12	177° 30'	2.57	177° 30'	2.57	177° 30'
13	177° 30'	2.57	177° 30'	2.57	177° 30'
14	177° 30'	2.57	177° 30'	2.57	177° 30'
15	177° 30'	2.57	177° 30'	2.57	177° 30'
16	177° 30'	2.57	177° 30'	2.57	177° 30'
17	177° 30'	2.57	177° 30'	2.57	177° 30'
18	177° 30'	2.57	177° 30'	2.57	177° 30'
19	177° 30'	2.57	177° 30'	2.57	177° 30'
20	177° 30'	2.57	177° 30'	2.57	177° 30'
21	177° 30'	2.57	177° 30'	2.57	177° 30'
22	177° 30'	2.57	177° 30'	2.57	177° 30'
23	177° 30'	2.57	177° 30'	2.57	177° 30'
24	177° 30'	2.57	177° 30'	2.57	177° 30'
25	177° 30'	2.57	177° 30'	2.57	177° 30'
26	177° 30'	2.57	177° 30'	2.57	177° 30'
27	177° 30'	2.57	177° 30'	2.57	177° 30'
28	177° 30'	2.57	177° 30'	2.57	177° 30'
29	177° 30'	2.57	177° 30'	2.57	177° 30'
30	177° 30'	2.57	177° 30'	2.57	177° 30'
31	177° 30'	2.57	177° 30'	2.57	177° 30'
32	177° 30'	2.57	177° 30'	2.57	177° 30'
33	177° 30'	2.57	177° 30'	2.57	177° 30'
34	177° 30'	2.57	177° 30'	2.57	177° 30'
35	177° 30'	2.57	177° 30'	2.57	177° 30'
36	177° 30'	2.57	177° 30'	2.57	177° 30'

10-33

Total number of Acres 24,262.67

Amount of Survey	When Surveyed	How Surveyed	How far and in what direction
25	1837	by 1837	by 1837
70	1852	by 1852	by 1852

The above Map of Township 12 N. Range 16 West
 Principal Meridian, Michigan, is hereby approved to be the full and
 true survey thereof on the 15th day of March 1859 and approved
 Surveyor General's Office
 Enclosed Feb. 19. 1859 = P. R. Lewis