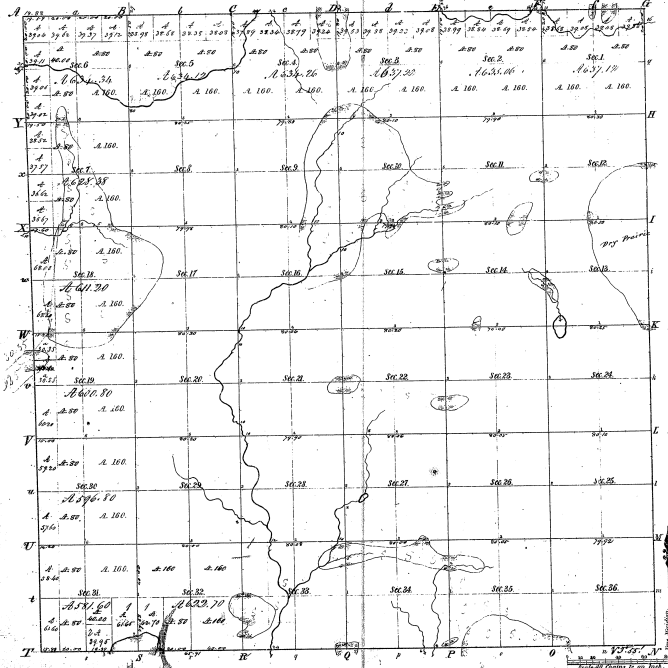


Township 1° 25. N. Range 1° 12. West Mer. (Mich.)

11-32



Mentures of part of a Section in Section 2, 1882					
Part	Course	Dist	Part	Course	Dist
1.	N 75° E	2.00			
2.	N 75° E	12.00			
3.	E 80° W	12.00			
4.	E 80° W	12.00			
5.	E 80° W	12.00			
6.	E 80° W	12.00			
7.	E 80° W	12.00			
8.	E 80° W	12.00			
9.	E 80° W	12.00			
10.	E 80° W	12.00			
11.	E 80° W	12.00			
12.	E 80° W	12.00			
13.	E 80° W	12.00			
14.	E 80° W	12.00			
15.	E 80° W	12.00			
16.	E 80° W	12.00			
17.	E 80° W	12.00			
18.	E 80° W	12.00			
19.	E 80° W	12.00			
20.	E 80° W	12.00			

11-32

Total number of acres 20, 813.60

Survey	By Whom Surveyed	Date of Contract	Amount of Survey	When Surveyed	Plan of the Survey
1.	Wm. H. H. H.	Aug 12, 1857	25.55	1857	1857
2.	Wm. H. H.	Aug 22, 1857	22.31	1857	1857
3.	Wm. H. H.	Aug 22, 1857	22.31	1857	1857

The above copy of Township 15 N. Range 12 W. of Range 15 N. of Mer. is a truly conformable to the field notes of the Survey thereof on file in the Office which have been examined, and approved.

Survey General Office  
 Grand Rapids, Mich. 20, 1857

C. R. ...