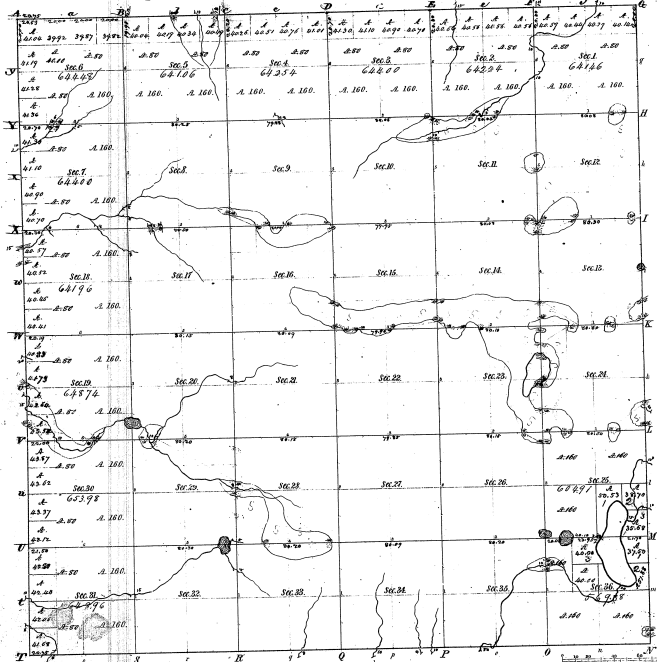


## Township No 13 N Range No 14 west Mer. (Mich.)



Total number of acres 22927 1/2

Acres	By whom surveyed	Date of Contract	Amount of Survey	When Surveyed	Who Surveyed
Township Area	Wm. H. Whitefield	17. Feb. 1837	36	01. Feb. 42. p. 1837	A. G. L. B. B.
Subdivisions	Wm. H. Whitefield	25. "	62. 01. Feb. 42. p. 1838	1. p. 1839	

The above map of Township No 13 N. of Range No 14 West. Approved hereon by the Surveyor, duly responsible to the field as to the accuracy of the same, and filed in this office, which has been examined and approved.

Surveyor's Office  
Goshen, Feb. 22. 1839

Merridee of a Sale in Sections 25 & 26					
Publ Course	VALU	Publ Course	VALU	Publ Course	VALU
a. 682 00	5.00				
b. 1270	1.00				
c. 1270	1.00				
d. 1270	1.00				
e. 1270	1.00				
f. 1270	1.00				
g. 1270	1.00				
h. 1270	1.00				
i. 1270	1.00				
j. 1270	1.00				
k. 1270	1.00				
l. 1270	1.00				
m. 1270	1.00				
n. 1270	1.00				
o. 1270	1.00				
p. 1270	1.00				
q. 1270	1.00				
r. 1270	1.00				
s. 1270	1.00				
t. 1270	1.00				
u. 1270	1.00				
v. 1270	1.00				
w. 1270	1.00				
x. 1270	1.00				
y. 1270	1.00				
z. 1270	1.00				

10-30