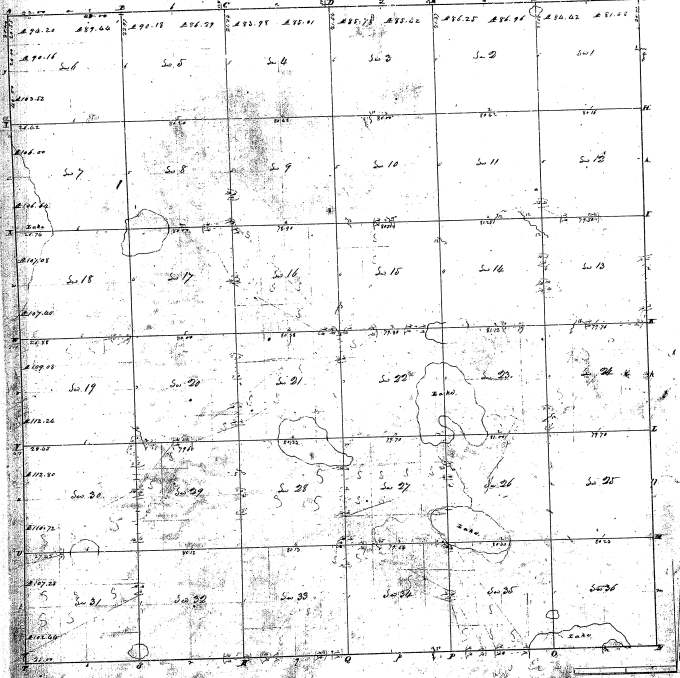


Township N. ^{III} north, Range N. ^{VIII} East Bos. (Mich. Ter.) 77



28-29

28-29

D
 was a survey of a new tract with instructions from Edward Tiffin, Surveyor General of
 the United States, bearing date the 24th of August 1805, and signed by the said
 Commissioner, and in which said instructions it is contained that the said surveyor
 on a plot of sections in the Township of ... in ... with the ...
 Charles ...

Thompson & Co