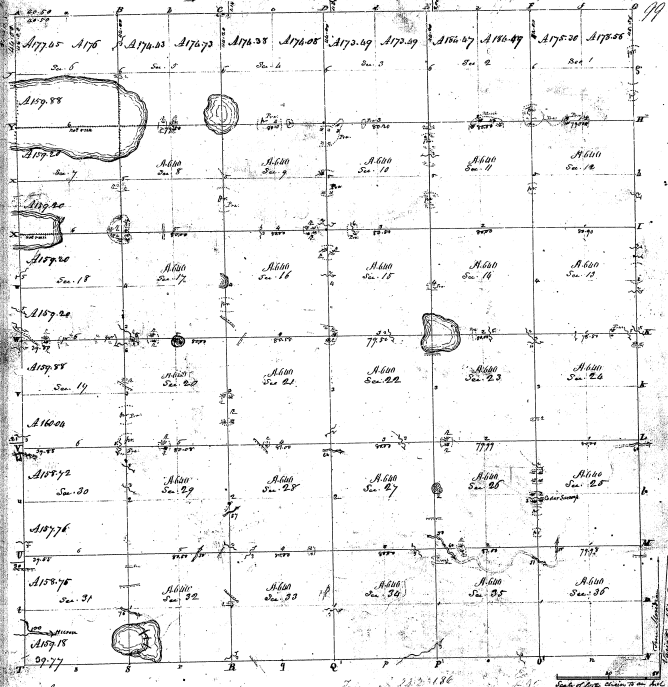


Township N. 20 North, Range N. X East of Mer. (Mich. Ter.)

27-31

1E-12



Pursuant to a Contract with the Instructions from Edward A. Fox Esquire Surveyor General of the State of Michigan bearing date the 10th day of August 1817 I have examined the plat and have surveyed the above described Township & do hereby certify that it has such marks & bounds both Natural & Artificial as are represented in the plat & describe in the statement made thereof & returned with this plat into the Surveyor General's Office.

at Detroit this 27th day of September 1817

J. Wampler Esq.