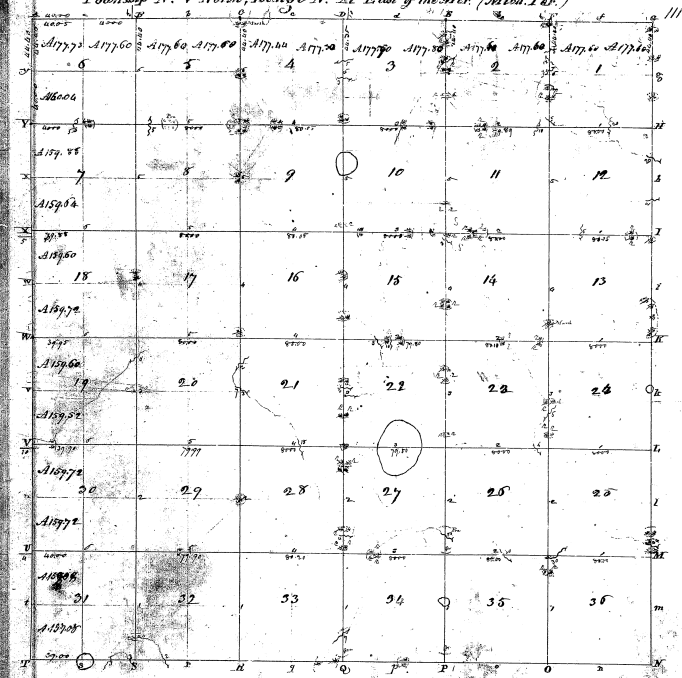


Township N. V North, Range N. XI East of the Mer. (Mich. Ter.)



27-22

22-18

Pursuant to a contract with and instructions from Edward J. [unclear] Surveyor-General of the State of Michigan, I have examined the plat and description of the above described township and its [unclear] and find that it is a true and correct plat and description of the above described township and its [unclear] and that the same is in accordance with the laws of the State of Michigan. Witness my hand and the seal of the Surveyor-General's Office this 31st day of [unclear] 1877.

A. Wampler, Dep.