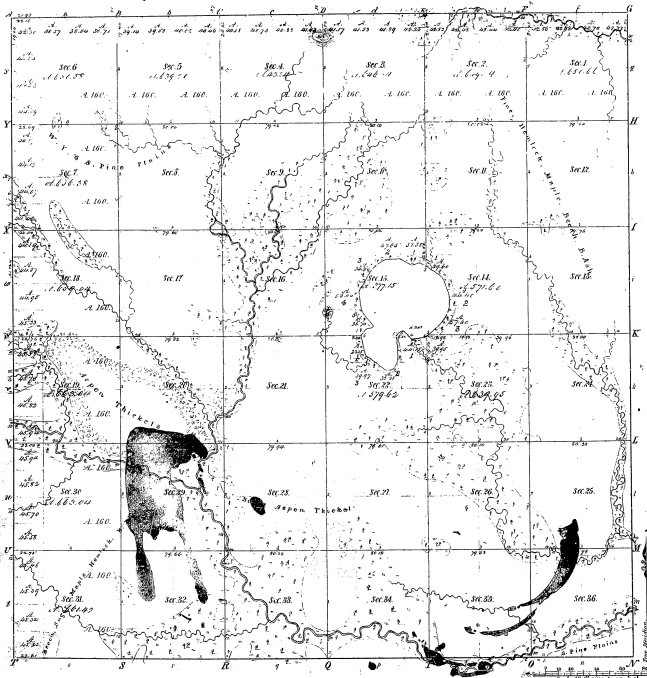


No. survey
Township 1° 22' N. Range 1° 2' E. Mer. Mich.



Mileage of	
Public Courses	Private Courses
71	34

21-34

Total number of Acres 22741.60				
Survey Designated	By Whom Surveyed	Date of Contract	Amount of Survey	When Surveyed
Township lines	James Wilson	July 20, 1857	36 Secs.	1857
Subdivisions	W. H. Hall	July 14, 1858	60 Secs by 2000 ft	1858

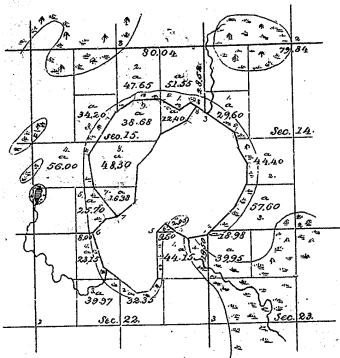
The above Map of Township 1° 22' North of Range 1° 2' East of the Principal Meridian will also be run as shown approximately to the field notes of the survey thereon on file in this office, which have been perused and approved.

Surveyor General's Office,
 Detroit, July 25, 1866.
 Lucius Lyon, Supr. Genl.

Original

PLAT
 of
 SEC. 15, T. 22 N. R. 2 E. MICH. MER.
 Michigan.

21-34 (2)



Scale 40 chains to 1 Inch.

Department of the Interior,
 General Land Office,
 March 15th, 1883.

The above Plat of Lots 7, 8, 9 & 10, Sec. 15, Township 22 N. R. 2 E. Mich. Mer. State of Michigan, represents the Survey by Jacob R. Myers, Deputy Surveyor, executed under instructions from the Commissioner of the General Land Office, bearing date Sept. 6th 1882, and is strictly conformable to the field-notes of the survey thereof, which have been examined and approved.

Michael Farland
 Assessor &
 Surr. Genl. of Mich.