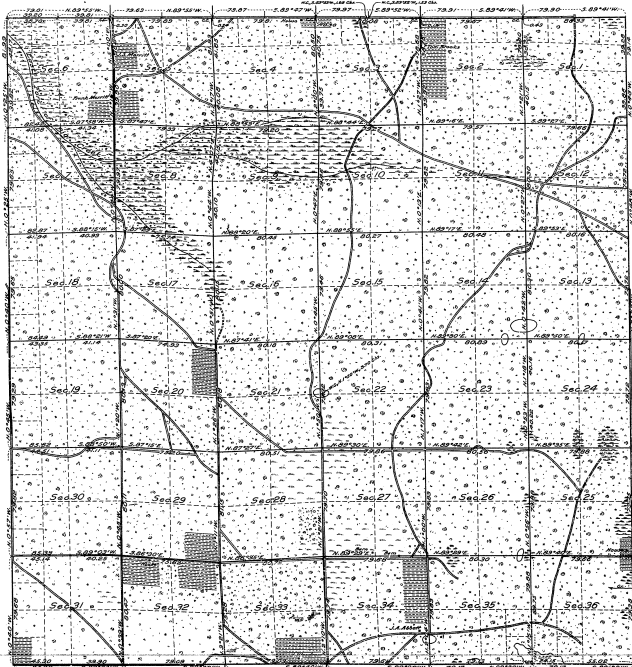


Resurvey Plat of T. 25 N., R. 2 E., Mich. Mer. Michigan.

21-23
21-23



MEMORANDUM.

This plat of the resurvey of Township 25 North, Range 2 East, of the Michigan Meridian, Michigan, delineates a retracement and re-establishment of the lines of the original survey of the township as shown upon the plat approved June 24, 1902, in their true original positions according to the best available evidence of the positions of the original corners. All differences between the measurements shown on the original plat and those derived in the retracement have been distributed proportionally between accepted corners in accordance with surveying rules.

Titles and areas based upon the original approved plat remain undisturbed for position and description.

The original meander line of the Lake in sections 35 and 36 agrees closely with the present actual shore line of the lake.

LEGEND.

Scale: 1 inch = 40 chains.

Surveyed by Guy S. Neal, U. S. Cadastral Engineer, from June 20 to July 21, 1904, inclusive, under special instructions for Group No. 8, Michigan, dated March 20, 1904, issued by Frank M. Johnson, Supervisor of Surveys, which were approved by the Commissioner of the General Land Office on April 2, 1904.

Office of U. S. Supervisor of Surveys.

Denver, Colorado, September 11, 1904.

The above resurvey plat of Township 25 North, Range 2 East, of the Michigan Meridian, in the State of Michigan, is strictly conformable to the field notes of the resurvey thereof, which have been examined and approved.

Frank M. Johnson
U. S. Supervisor of Surveys.

Department of the Interior,
General Land Office.

Washington, D. C., March 8, 1906.

The resurvey represented by this plat, having been correctly executed in accordance with the requirements of law and the regulations of this office, is hereby accepted.

W. C. Gault
Acting Assistant Commissioner.