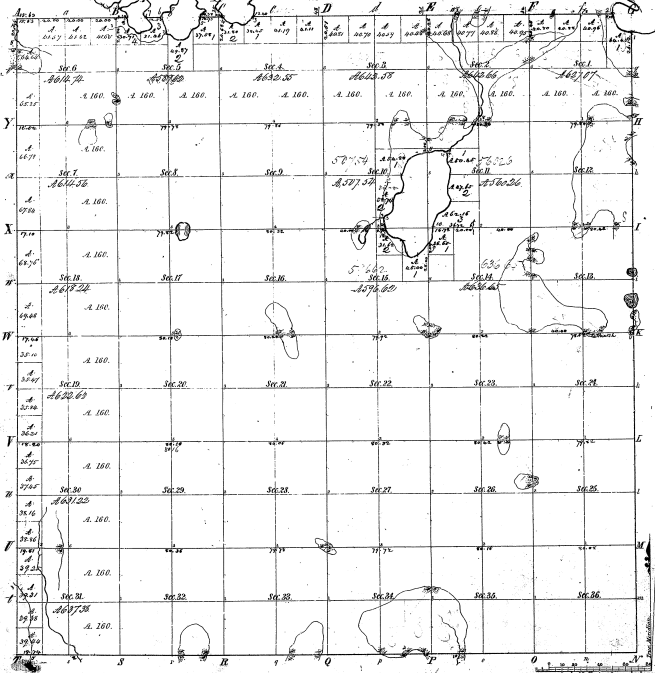


Range 27-1

Township 19 S 27 E Range N<sup>o</sup> 4 E. Mer. Mich.



Meridian's Corrected Values			
Push Course	Value	Push Course	Value
1	1793.91	5	1797.49
2	1797.49	6	1797.49
3	1797.49	7	1797.49
4	1797.49	8	1797.49
9	1797.49	9	1797.49
10	1797.49	10	1797.49
11	1797.49	11	1797.49
12	1797.49	12	1797.49
13	1797.49	13	1797.49
14	1797.49	14	1797.49
15	1797.49	15	1797.49
16	1797.49	16	1797.49
17	1797.49	17	1797.49
18	1797.49	18	1797.49
19	1797.49	19	1797.49
20	1797.49	20	1797.49
21	1797.49	21	1797.49
22	1797.49	22	1797.49
23	1797.49	23	1797.49
24	1797.49	24	1797.49
25	1797.49	25	1797.49
26	1797.49	26	1797.49
27	1797.49	27	1797.49
28	1797.49	28	1797.49
29	1797.49	29	1797.49
30	1797.49	30	1797.49
31	1797.49	31	1797.49
32	1797.49	32	1797.49
33	1797.49	33	1797.49
34	1797.49	34	1797.49
35	1797.49	35	1797.49
36	1797.49	36	1797.49
37	1797.49	37	1797.49
38	1797.49	38	1797.49
39	1797.49	39	1797.49
40	1797.49	40	1797.49
41	1797.49	41	1797.49
42	1797.49	42	1797.49
43	1797.49	43	1797.49
44	1797.49	44	1797.49
45	1797.49	45	1797.49
46	1797.49	46	1797.49
47	1797.49	47	1797.49
48	1797.49	48	1797.49
49	1797.49	49	1797.49
50	1797.49	50	1797.49
51	1797.49	51	1797.49
52	1797.49	52	1797.49
53	1797.49	53	1797.49
54	1797.49	54	1797.49
55	1797.49	55	1797.49
56	1797.49	56	1797.49
57	1797.49	57	1797.49
58	1797.49	58	1797.49
59	1797.49	59	1797.49
60	1797.49	60	1797.49
61	1797.49	61	1797.49
62	1797.49	62	1797.49
63	1797.49	63	1797.49
64	1797.49	64	1797.49
65	1797.49	65	1797.49
66	1797.49	66	1797.49
67	1797.49	67	1797.49
68	1797.49	68	1797.49
69	1797.49	69	1797.49
70	1797.49	70	1797.49
71	1797.49	71	1797.49
72	1797.49	72	1797.49
73	1797.49	73	1797.49
74	1797.49	74	1797.49
75	1797.49	75	1797.49
76	1797.49	76	1797.49
77	1797.49	77	1797.49
78	1797.49	78	1797.49
79	1797.49	79	1797.49
80	1797.49	80	1797.49
81	1797.49	81	1797.49
82	1797.49	82	1797.49
83	1797.49	83	1797.49
84	1797.49	84	1797.49
85	1797.49	85	1797.49
86	1797.49	86	1797.49
87	1797.49	87	1797.49
88	1797.49	88	1797.49
89	1797.49	89	1797.49
90	1797.49	90	1797.49
91	1797.49	91	1797.49
92	1797.49	92	1797.49
93	1797.49	93	1797.49
94	1797.49	94	1797.49
95	1797.49	95	1797.49
96	1797.49	96	1797.49
97	1797.49	97	1797.49
98	1797.49	98	1797.49
99	1797.49	99	1797.49
100	1797.49	100	1797.49

21-3

21-13

Average Designated	By Whom Surveyed	Date of Contract	Amount of Survey	When Surveyed	When Made and by Whom
Township 19 S Range 27 E	Geo. W. Blanton	March 1859	25 76 74	5 <sup>o</sup> 7 <sup>o</sup> 1859	5 <sup>o</sup> 7 <sup>o</sup> 1859
Subdivisions	As Surveyed	Feb. 22, 1862	25 76 74	5 <sup>o</sup> 7 <sup>o</sup> 1862	5 <sup>o</sup> 7 <sup>o</sup> 1862

The above copy of Township 19 S 27 E Range N<sup>o</sup> 4 East of the Principal Meridian, Michigan, is hereby approved to the field notes of the survey thereof filed in the Office which have been examined and approved.

George's General Office  
Ann Arbor, 10<sup>o</sup> 4<sup>o</sup> 1860

*(Signature)*