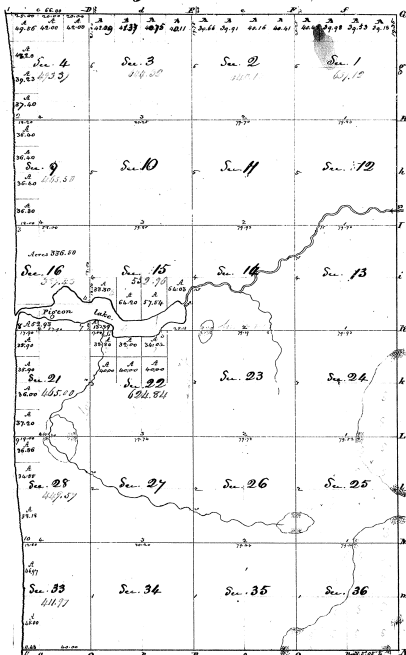


Township N. VI North, Range N. XVI West Mer. (Mic. Tor.)



Measures of
Lake Pigeon

Point	Course	D. C.	Remarks
1	S. 75.0	12.00	to Sec. 16
2	S. 75.0	12.00	to Sec. 16
3	S. 75.0	12.00	to Sec. 16
4	S. 75.0	12.00	to Sec. 16
5	S. 75.0	12.00	to Sec. 16
6	S. 75.0	12.00	to Sec. 16
7	S. 75.0	12.00	to Sec. 16
8	S. 75.0	12.00	to Sec. 16
9	S. 75.0	12.00	to Sec. 16
10	S. 75.0	12.00	to Sec. 16
11	S. 75.0	12.00	to Sec. 16
12	S. 75.0	12.00	to Sec. 16
13	S. 75.0	12.00	to Sec. 16
14	S. 75.0	12.00	to Sec. 16
15	S. 75.0	12.00	to Sec. 16
16	S. 75.0	12.00	to Sec. 16
17	S. 75.0	12.00	to Sec. 16
18	S. 75.0	12.00	to Sec. 16
19	S. 75.0	12.00	to Sec. 16
20	S. 75.0	12.00	to Sec. 16
21	S. 75.0	12.00	to Sec. 16
22	S. 75.0	12.00	to Sec. 16
23	S. 75.0	12.00	to Sec. 16
24	S. 75.0	12.00	to Sec. 16
25	S. 75.0	12.00	to Sec. 16
26	S. 75.0	12.00	to Sec. 16
27	S. 75.0	12.00	to Sec. 16
28	S. 75.0	12.00	to Sec. 16
29	S. 75.0	12.00	to Sec. 16
30	S. 75.0	12.00	to Sec. 16
31	S. 75.0	12.00	to Sec. 16
32	S. 75.0	12.00	to Sec. 16
33	S. 75.0	12.00	to Sec. 16
34	S. 75.0	12.00	to Sec. 16
35	S. 75.0	12.00	to Sec. 16
36	S. 75.0	12.00	to Sec. 16

Survey	By Whom	When	Change	Area	Remarks
Boundary	L. Lyon	17. Nov. 1830			
Subdivision	C. Burton	18 " "	45.79.95	May 1832	2.7: 133

This above list of Corners & Boundaries of Range N. 16 West of the Meridian, which was Sec. 16, is the only one that has been filed with the Survey Office, which have been examined and approved. Surveyor General's Office, St. Louis, Mo. 4/1835

8-17 1835
8-17