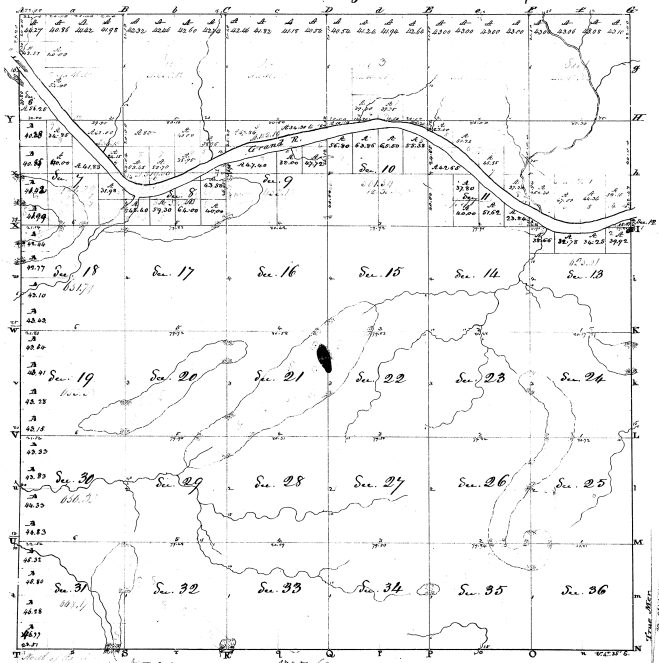


Township N. VII North, Range N. XIV West Mer. (Mic. Lon.)



Boundaries of Grand River South Side

1	0.30	18.60
2	0.30	18.60
3	0.30	18.60
4	0.30	18.60
5	0.30	18.60
6	0.30	18.60
7	0.30	18.60
8	0.30	18.60
9	0.30	18.60
10	0.30	18.60
11	0.30	18.60
12	0.30	18.60
13	0.30	18.60
14	0.30	18.60
15	0.30	18.60
16	0.30	18.60
17	0.30	18.60
18	0.30	18.60
19	0.30	18.60
20	0.30	18.60
21	0.30	18.60
22	0.30	18.60
23	0.30	18.60
24	0.30	18.60
25	0.30	18.60
26	0.30	18.60
27	0.30	18.60
28	0.30	18.60
29	0.30	18.60
30	0.30	18.60
31	0.30	18.60
32	0.30	18.60
33	0.30	18.60
34	0.30	18.60
35	0.30	18.60
36	0.30	18.60

116
8-14

Number of acres 1331.6

Original Patent	Section	Acres	Original Patent	Section	Acres
Richardson	18	53.34.00	Richardson	22	53.34.00
Richardson	19	53.34.00	Richardson	23	53.34.00
Richardson	20	53.34.00	Richardson	24	53.34.00
Richardson	21	53.34.00	Richardson	25	53.34.00
Richardson	22	53.34.00	Richardson	26	53.34.00
Richardson	23	53.34.00	Richardson	27	53.34.00
Richardson	24	53.34.00	Richardson	28	53.34.00
Richardson	25	53.34.00	Richardson	29	53.34.00
Richardson	26	53.34.00	Richardson	30	53.34.00
Richardson	27	53.34.00	Richardson	31	53.34.00
Richardson	28	53.34.00	Richardson	32	53.34.00
Richardson	29	53.34.00	Richardson	33	53.34.00
Richardson	30	53.34.00	Richardson	34	53.34.00
Richardson	31	53.34.00	Richardson	35	53.34.00
Richardson	32	53.34.00	Richardson	36	53.34.00

The above map of Township N. VII North of Range N. XIV West of the Meridian, Michigan, is a true and correct copy of the field notes of the survey thereof on file in the office, which have been examined and approved.

Surveyor General's Office
 Dubuque Sept. 8th 1838
 M. T. Williams
 Sur. Gen.