

RESURVEY
Township N^o 33 N Range N^o 8 E.

Her. Mich.



70-173

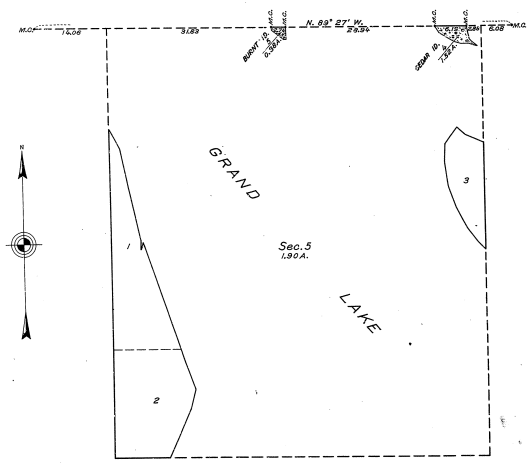
Total number of acres 12,491.83

Source	By What Survey	Date of Patent	Number of Acres	Area Adjoined	Area Claimed by Settlers
U.S. General Land Office	Public Land	1855	12,491.83	0	0
U.S. General Land Office	Public Land	1855	12,491.83	0	0

The above map of Township N^o 33 North of Range N^o 8 East of the Principal Meridian of Michigan is truly and correctly a full and true copy of the original filed in the office of the Surveyor General of Michigan and approved by Charles L. Comstock, Surveyor General of Michigan.

TOWNSHIP NO. 33 NORTH, RANGE NO. 8 EAST, MICHIGAN MERIDIAN, MICHIGAN.
 SURVEY OF TWO ISLANDS IN GRAND LAKE, SECTION 5.

20-17
 50-17 (2)



MEMORANDUM.
 THIS PLAT REPRESENTS THE SURVEY OF TWO ISLANDS IN GRAND LAKE, WHICH WERE NOT SHOWN UPON THE OFFICIAL TOWNSHIP PLAT APPROVED JULY 26, 1896. THE SURVEY WAS EXECUTED PURSUANT TO AUTHORITY CONTAINED IN GENERAL LAND OFFICE LETTER 1252055 "K", DATED JUNE 30, 1927, WHICH BEARS DEPARTMENTAL APPROVAL OF JULY 7, 1927.

LEGEND.
 SCALE: 1 INCH = 10 CHAINS.
 SURVEYED BY GUY R. VEAL, U. S. CADASTRAL ENGINEER, FROM SEPT. 27 TO OCT. 3, 1926, UNDER SPECIAL INSTRUCTIONS FOR GROUP NO. 18, MICHIGAN, DATED JULY 11, 1926, ISSUED BY DONALD S. CLEMENT, TECHNICAL ASSISTANT TO THE SUPERVISOR OF SURVEYS, WHICH WERE APPROVED BY THE COMMISSIONER OF THE GENERAL LAND OFFICE ON JULY 18, 1926.
 AREA OF LANDS SURVEYED = 1.90 ACRES.

OFFICE OF U. S. SUPERVISOR OF SURVEYS,
 DENVER, COLORADO, APRIL 30, 1929.
 THE ABOVE PLAT OF TWO ISLANDS IN GRAND LAKE IN SECTION 5, TOWNSHIP NO. 33 NORTH, RANGE NO. 8 EAST, MICHIGAN MERIDIAN, MICHIGAN, IS STRICTLY CONFORMABLE TO THE FIELD NOTES OF THE SURVEY THEREOF, WHICH HAVE BEEN EXAMINED AND APPROVED.

Wm. M. Schuman
 U. S. SUPERVISOR OF SURVEYS.

DEPARTMENT OF THE INTERIOR,
 GENERAL LAND OFFICE,
 WASHINGTON, D. C., JULY 25, 1929.
 THE SURVEY REPRESENTED BY THIS PLAT, HAVING BEEN CORRECTLY EXECUTED IN ACCORDANCE WITH THE REQUIREMENTS OF LAW AND THE REGULATIONS OF THIS OFFICE, IS HEREBY ACCEPTED.

Wm. C. Starnell
 ASSISTANT COMMISSIONER.