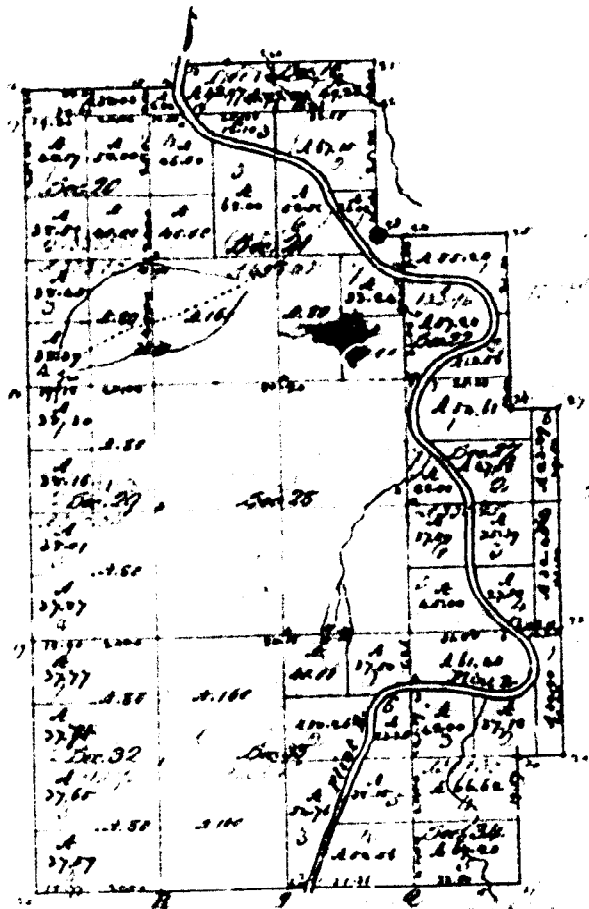


Pursuant to a contract with and instruction from Edward Tiffin Esquire Surveyor General of the
 United States bearing date the 5th day of September 1821, I have examined, laid out and surveyed
 the above described Township and do hereby certify that it had such meanders and bounds
 both natural and artificial as are represented on said plat and described in the Rules
 lately made thereof and returned with the plat into the Surveyor General's Office.

Certified the 17th day of January 1822
 Horatio Ball et al.



1700	1.00	1700
1701	1.00	1701
1702	1.00	1702
1703	1.00	1703
1704	1.00	1704
1705	1.00	1705
1706	1.00	1706
1707	1.00	1707
1708	1.00	1708
1709	1.00	1709
1710	1.00	1710
1711	1.00	1711
1712	1.00	1712
1713	1.00	1713
1714	1.00	1714
1715	1.00	1715
1716	1.00	1716
1717	1.00	1717
1718	1.00	1718
1719	1.00	1719
1720	1.00	1720
1721	1.00	1721
1722	1.00	1722
1723	1.00	1723
1724	1.00	1724
1725	1.00	1725
1726	1.00	1726
1727	1.00	1727
1728	1.00	1728
1729	1.00	1729
1730	1.00	1730
1731	1.00	1731
1732	1.00	1732
1733	1.00	1733
1734	1.00	1734
1735	1.00	1735
1736	1.00	1736
1737	1.00	1737
1738	1.00	1738
1739	1.00	1739
1740	1.00	1740
1741	1.00	1741
1742	1.00	1742
1743	1.00	1743
1744	1.00	1744
1745	1.00	1745
1746	1.00	1746
1747	1.00	1747
1748	1.00	1748
1749	1.00	1749
1750	1.00	1750
1751	1.00	1751
1752	1.00	1752
1753	1.00	1753
1754	1.00	1754
1755	1.00	1755
1756	1.00	1756
1757	1.00	1757
1758	1.00	1758
1759	1.00	1759
1760	1.00	1760
1761	1.00	1761
1762	1.00	1762
1763	1.00	1763
1764	1.00	1764
1765	1.00	1765
1766	1.00	1766
1767	1.00	1767
1768	1.00	1768
1769	1.00	1769
1770	1.00	1770
1771	1.00	1771
1772	1.00	1772
1773	1.00	1773
1774	1.00	1774
1775	1.00	1775
1776	1.00	1776
1777	1.00	1777
1778	1.00	1778
1779	1.00	1779
1780	1.00	1780
1781	1.00	1781
1782	1.00	1782
1783	1.00	1783
1784	1.00	1784
1785	1.00	1785
1786	1.00	1786
1787	1.00	1787
1788	1.00	1788
1789	1.00	1789
1790	1.00	1790
1791	1.00	1791
1792	1.00	1792
1793	1.00	1793
1794	1.00	1794
1795	1.00	1795
1796	1.00	1796
1797	1.00	1797
1798	1.00	1798
1799	1.00	1799
1800	1.00	1800

		Total number of acres	
When Surveyed	Date of Contract	When Surveyed	When changed in the Survey
John M. Wallace	Feb. 16. 1839	1.72 .37	2.77 .1839
		20.78 .55	

The above Map of Township N. 10 N. Range N. 5 E. East of the Principal Meridian Michigan is a copy of the original of the survey thereof on file in this Office under said name.

Surveyor General's Office
Cincinnati, May 23. 1840.

G. Stearns