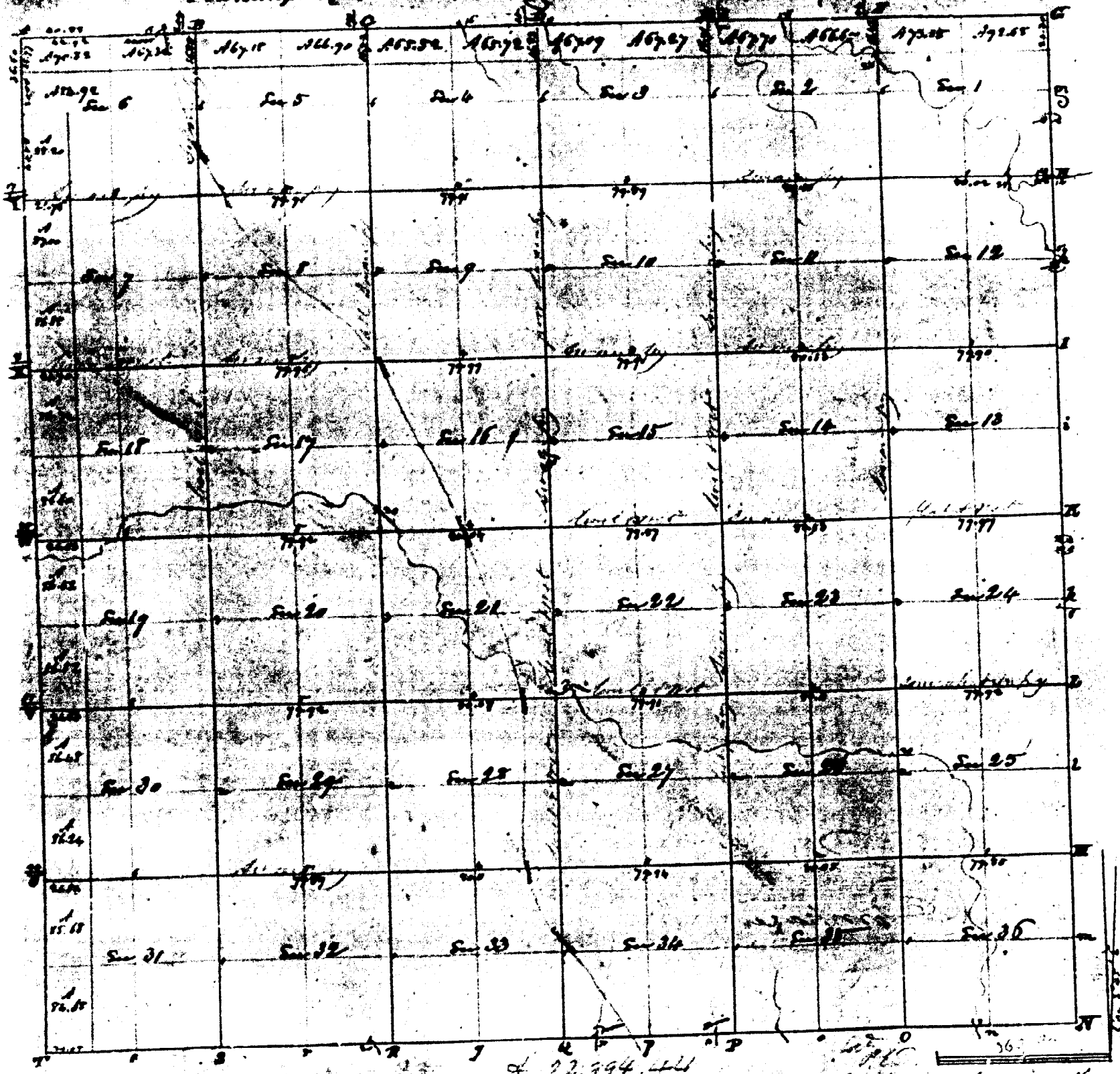


Township N. 2 North, Range N. VI East Mer. (M. 2 on)



23

of 22,994 acres  
 Pursuant to a contract with such instructions from Colonel John Snymer General of the United States bearing date the  
 I have aforementioned laid out and surveyed the above Township, and do hereby certify that it has such  
 and bounds both National and Artificial as are represented on said plat and described in the said State main  
 thereof and returned with this plat into the Surveyor General's Office Certified this 20th day of April 1822 -  
 J. Wampler D. S.