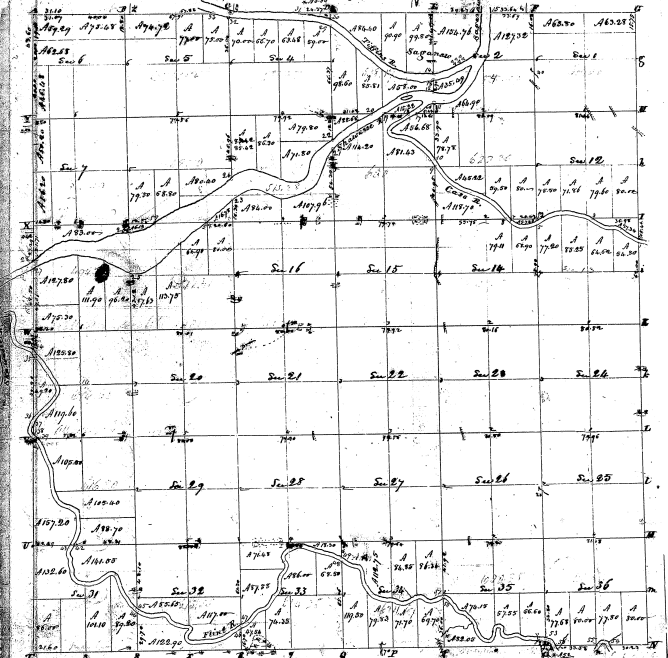


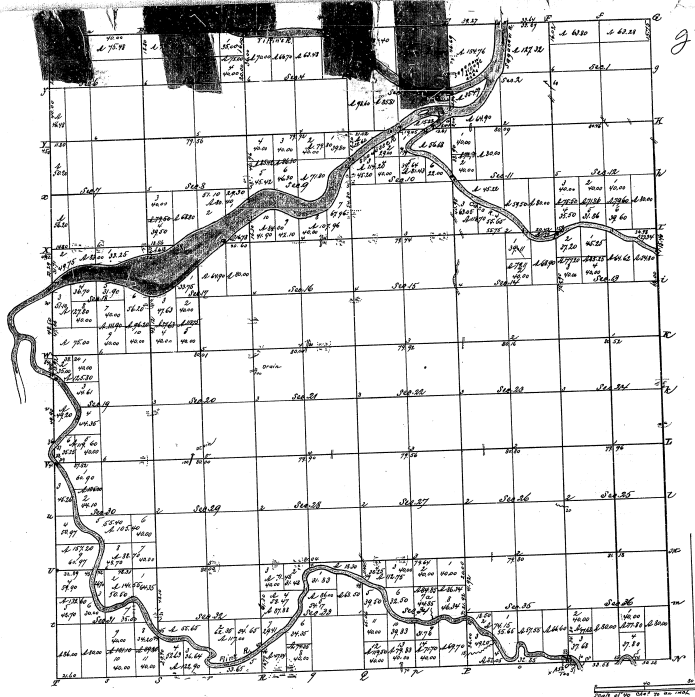
Township N. 11 North, Range N. 14 East Mer. (M. Ten.)



23-40
23-40

1852 Aug 21 & 26
 Pursuant to a contract with and instructions from George W. Fox, Surveyor General of the United States bearing date the 17th day of August 1852 and also bearing the same tenor, and to certify that the said land marked and bounded both natural and artificial as are represented on said contract and certificate in the field notes made during said survey and also the true Surveyor General's office. Witness the contrary of my hand and seal this 21st day of August 1852.

Wm. W. Fox



23-400
23-40

Township N. XI north, Range N. II East of the (rockies)

Surveyed by Joseph M. Wampler 1882

Vol. 4

DEPARTMENT OF THE INTERIOR,
Geological and Survey Commission.

Washington, D. C. October 12, 1905.

I hereby certify that this photo-lithograph is a true and literal reproduction of the original data surveyed and shown in prospect, available, etc. on file in this office.

J. H. D. Smith
Chief, Commission