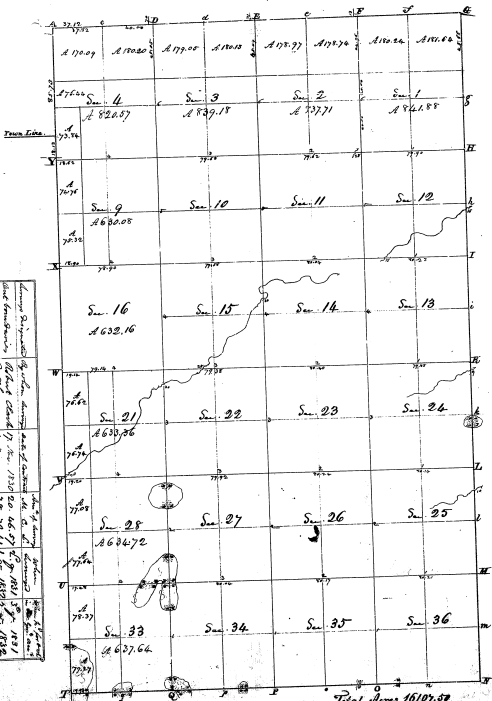


Township N. 11 North, Range N. 1 East Mer. (Mic. Tor.)



Original Survey made by John H. ...
 Original Plat filed for Record in the Office of the Register of Deeds for the County of ...
 at ... Mich. on the 27th day of ... 1853
 Original Survey made by ...
 Original Plat filed for Record in the Office of the Register of Deeds for the County of ...
 at ... Mich. on the 27th day of ... 1853

Total Acres 16107.57

The above map of Township N. 11 North, Range N. 1 East of the Township Division, Michigan, is strictly conformable to the field notes of the survey, and is a true and correct copy of the same, as shown and approved by the Register of Deeds for the County of ... Michigan, on the 27th day of ... 1853.

Section	Acres	Section	Acres

23-36

23-36

SECTION 8,
T. 11 N. R. 1 E. Mer. (Mic. Tor.)

1-000	130-20
70-66	8-2
72-74	527-87
72-74	
72-74	

Department of the Interior
 General Land Office
 January 14, 1858

The above plat representing the subdivision of the full half of Section 8, Township 11 North, Range 1 East, Michigan, has been carefully examined under the provisions of the Act of Congress approved April 2, 1850, and is hereby approved.

Henry Thompson
 Register of Deeds

Scale as shown on sheet