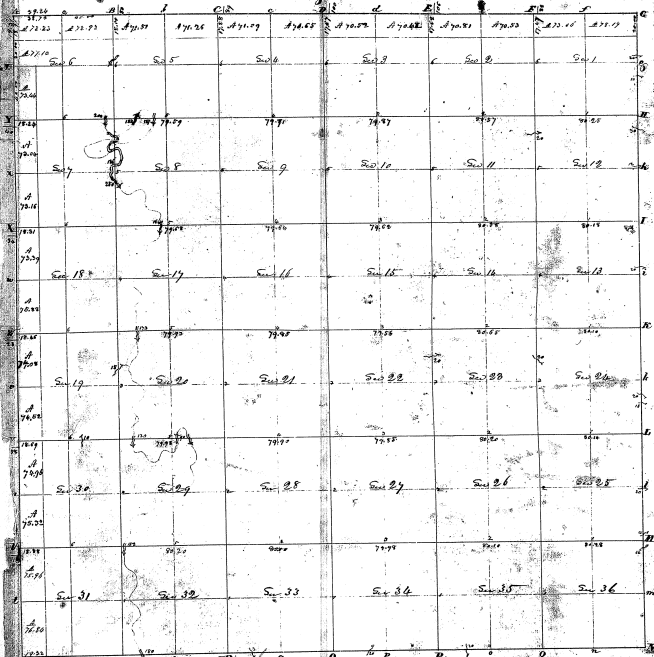


Township N. 14 North, Range N. 11 East 3d. (Sec. 20)

115



26-14

26-14

Whereas the following land and interests have been acquired by the Surveyor General of the United States, having note the description of the same as set out and bearing the above described Township, and in testimony that it has been surveyed and bounds both natural and artificial as are represented on said plat and described in the above plat, more than one copy of a true and correct copy of the same has been made and filed in the Surveyor General's Office - Certified this 27th day of July 1853.

Success, Surveyor Genl.