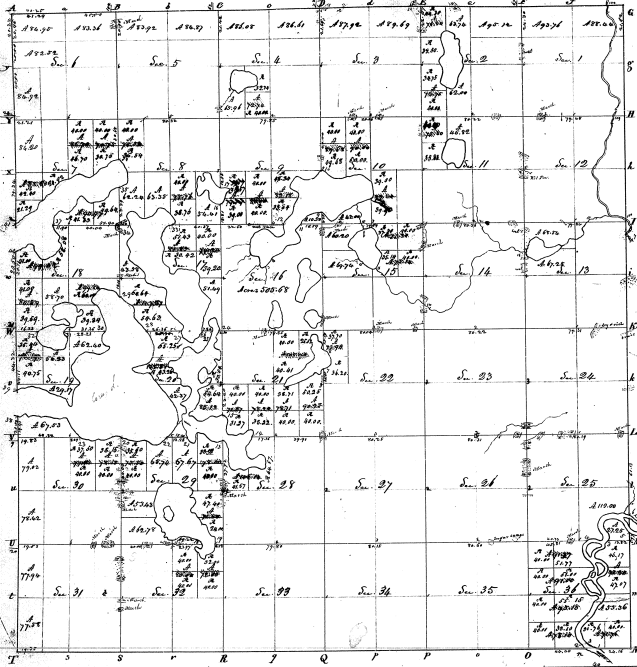


Township N. 11 south, Range N. 11 West (No. 10)



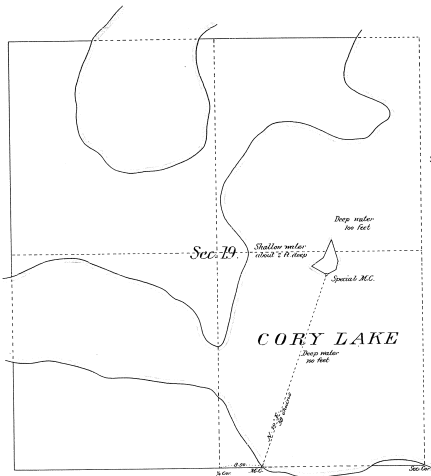
Surveyed in June 1828 - by Calvin Britton, S. & D.

| Contents | | Contents | |
|----------|------|----------|------|
| Page | Page | Page | Page |
| 1 | 160 | 1 | 160 |
| 2 | 160 | 2 | 160 |
| 3 | 160 | 3 | 160 |
| 4 | 160 | 4 | 160 |
| 5 | 160 | 5 | 160 |
| 6 | 160 | 6 | 160 |
| 7 | 160 | 7 | 160 |
| 8 | 160 | 8 | 160 |
| 9 | 160 | 9 | 160 |
| 10 | 160 | 10 | 160 |
| 11 | 160 | 11 | 160 |
| 12 | 160 | 12 | 160 |
| 13 | 160 | 13 | 160 |
| 14 | 160 | 14 | 160 |
| 15 | 160 | 15 | 160 |
| 16 | 160 | 16 | 160 |
| 17 | 160 | 17 | 160 |
| 18 | 160 | 18 | 160 |
| 19 | 160 | 19 | 160 |
| 20 | 160 | 20 | 160 |
| 21 | 160 | 21 | 160 |
| 22 | 160 | 22 | 160 |
| 23 | 160 | 23 | 160 |
| 24 | 160 | 24 | 160 |
| 25 | 160 | 25 | 160 |
| 26 | 160 | 26 | 160 |
| 27 | 160 | 27 | 160 |
| 28 | 160 | 28 | 160 |
| 29 | 160 | 29 | 160 |
| 30 | 160 | 30 | 160 |
| 31 | 160 | 31 | 160 |
| 32 | 160 | 32 | 160 |
| 33 | 160 | 33 | 160 |
| 34 | 160 | 34 | 160 |
| 35 | 160 | 35 | 160 |
| 36 | 160 | 36 | 160 |

| Section | Area | Section | Area |
|---------|------|---------|------|
| 5A 31 | 32.0 | Sum 36 | 600 |
| 5C 32 | 32.0 | 5C 32 | 32.0 |
| 5D 33 | 32.0 | 5D 33 | 32.0 |
| 5E 34 | 32.0 | 5E 34 | 32.0 |
| 5F 35 | 32.0 | 5F 35 | 32.0 |
| 5G 36 | 32.0 | 5G 36 | 32.0 |
| 5H 37 | 32.0 | 5H 37 | 32.0 |
| 5I 38 | 32.0 | 5I 38 | 32.0 |
| 5J 39 | 32.0 | 5J 39 | 32.0 |
| 5K 40 | 32.0 | 5K 40 | 32.0 |
| 5L 41 | 32.0 | 5L 41 | 32.0 |
| 5M 42 | 32.0 | 5M 42 | 32.0 |
| 5N 43 | 32.0 | 5N 43 | 32.0 |
| 5O 44 | 32.0 | 5O 44 | 32.0 |
| 5P 45 | 32.0 | 5P 45 | 32.0 |
| 5Q 46 | 32.0 | 5Q 46 | 32.0 |
| 5R 47 | 32.0 | 5R 47 | 32.0 |
| 5S 48 | 32.0 | 5S 48 | 32.0 |
| 5T 49 | 32.0 | 5T 49 | 32.0 |
| 5U 50 | 32.0 | 5U 50 | 32.0 |
| 5V 51 | 32.0 | 5V 51 | 32.0 |
| 5W 52 | 32.0 | 5W 52 | 32.0 |
| 5X 53 | 32.0 | 5X 53 | 32.0 |
| 5Y 54 | 32.0 | 5Y 54 | 32.0 |
| 5Z 55 | 32.0 | 5Z 55 | 32.0 |
| 5AA 56 | 32.0 | 5AA 56 | 32.0 |
| 5AB 57 | 32.0 | 5AB 57 | 32.0 |
| 5AC 58 | 32.0 | 5AC 58 | 32.0 |
| 5AD 59 | 32.0 | 5AD 59 | 32.0 |
| 5AE 60 | 32.0 | 5AE 60 | 32.0 |
| 5AF 61 | 32.0 | 5AF 61 | 32.0 |
| 5AG 62 | 32.0 | 5AG 62 | 32.0 |
| 5AH 63 | 32.0 | 5AH 63 | 32.0 |
| 5AI 64 | 32.0 | 5AI 64 | 32.0 |
| 5AJ 65 | 32.0 | 5AJ 65 | 32.0 |
| 5AK 66 | 32.0 | 5AK 66 | 32.0 |
| 5AL 67 | 32.0 | 5AL 67 | 32.0 |
| 5AM 68 | 32.0 | 5AM 68 | 32.0 |
| 5AN 69 | 32.0 | 5AN 69 | 32.0 |
| 5AO 70 | 32.0 | 5AO 70 | 32.0 |
| 5AP 71 | 32.0 | 5AP 71 | 32.0 |
| 5AQ 72 | 32.0 | 5AQ 72 | 32.0 |
| 5AR 73 | 32.0 | 5AR 73 | 32.0 |
| 5AS 74 | 32.0 | 5AS 74 | 32.0 |
| 5AT 75 | 32.0 | 5AT 75 | 32.0 |
| 5AU 76 | 32.0 | 5AU 76 | 32.0 |
| 5AV 77 | 32.0 | 5AV 77 | 32.0 |
| 5AW 78 | 32.0 | 5AW 78 | 32.0 |
| 5AX 79 | 32.0 | 5AX 79 | 32.0 |
| 5AY 80 | 32.0 | 5AY 80 | 32.0 |
| 5AZ 81 | 32.0 | 5AZ 81 | 32.0 |
| 5BA 82 | 32.0 | 5BA 82 | 32.0 |
| 5BB 83 | 32.0 | 5BB 83 | 32.0 |
| 5BC 84 | 32.0 | 5BC 84 | 32.0 |
| 5BD 85 | 32.0 | 5BD 85 | 32.0 |
| 5BE 86 | 32.0 | 5BE 86 | 32.0 |
| 5BF 87 | 32.0 | 5BF 87 | 32.0 |
| 5BG 88 | 32.0 | 5BG 88 | 32.0 |
| 5BH 89 | 32.0 | 5BH 89 | 32.0 |
| 5BI 90 | 32.0 | 5BI 90 | 32.0 |
| 5BJ 91 | 32.0 | 5BJ 91 | 32.0 |
| 5BK 92 | 32.0 | 5BK 92 | 32.0 |
| 5BL 93 | 32.0 | 5BL 93 | 32.0 |
| 5BM 94 | 32.0 | 5BM 94 | 32.0 |
| 5BN 95 | 32.0 | 5BN 95 | 32.0 |
| 5BO 96 | 32.0 | 5BO 96 | 32.0 |
| 5BP 97 | 32.0 | 5BP 97 | 32.0 |
| 5BQ 98 | 32.0 | 5BQ 98 | 32.0 |
| 5BR 99 | 32.0 | 5BR 99 | 32.0 |
| 5BS 100 | 32.0 | 5BS 100 | 32.0 |

5-2-2

2085 (5)



MAP OF ISLAND
IN
CORY LAKE
SECTION 19, T. 6. S. R. 12 W.
MICHIGAN.

Surveyed by O.H. Todd, U.S. Deputy Surveyor
January 15th 1895
Scale 10 chains to an inch.

| Number of Islands | | |
|-------------------|---------------|--------|
| No. | Course | Chains |
| 1. | N. 65° W. | 2.21 |
| 2. | N. 25° E. | 2.76 |
| 3. | S. 22° 30' E. | 2.85 |
| 4. | S. 12° E. | 2.10 |
| 5. | S. 10° 30' W. | 2.79 |
| 6. | S. 67° W. | 1.75 |

AREA
143 Acres

By order of the Commissioner of the General Land Office
this island has been designated as Lot 1. See letter
from Department of the Interior dated Nov. 20, 1890.
Revised this
bearing with accuracy

J. O. Berry
Surveyor

Department of the Interior
General Land Office
Washington D.C. February 12-1895

228

The above map of an island in Cory Lake, in Section No. 19, T. 6. S. R. 12 W. of the Principal Meridian, Michigan, is a correct plot of a survey executed by O.H. Todd, U.S. Deputy Surveyor, in pursuance of instructions from the Commissioner of the General Land Office, bearing date of the 15th day of December 1894, said map is strictly conformable to the field notes thereof which have been examined and approved.

M. Lamoreux
Commissioner and Re-Office Surveyor General for Michigan

RECEIVED AT
GENERAL LAND OFFICE
FEBRUARY 1895

RECEIVED AT
FEBRUARY 1895