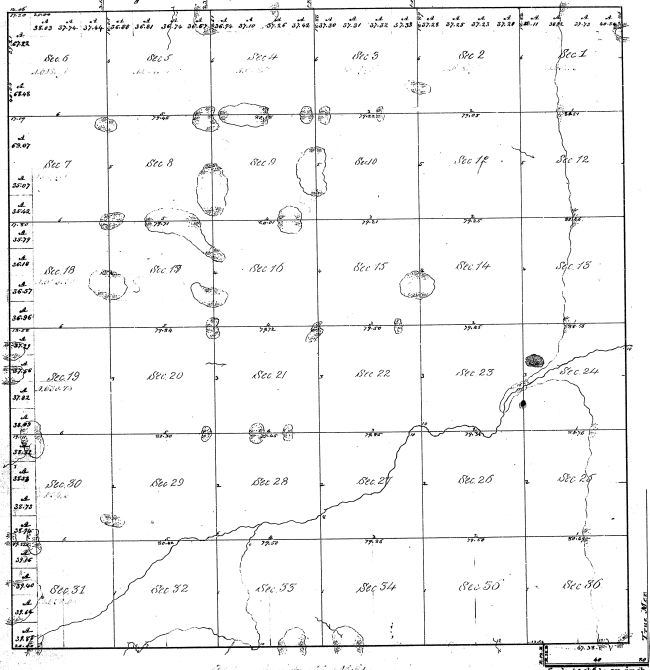


Township N° 11 N, Range N° 12 E Mer Mich.

111  
25-35  
111



Range designated	By whom	Date of order	Number of sections	Area in acres	When 22 feet
Section 1	Henry Rankin	1835	36	3600	1835
Section 2	Henry Rankin	1835	36	3600	1835
Section 3	Henry Rankin	1835	36	3600	1835
Section 4	Henry Rankin	1835	36	3600	1835
Section 5	Henry Rankin	1835	36	3600	1835
Section 6	Henry Rankin	1835	36	3600	1835
Section 7	Henry Rankin	1835	36	3600	1835
Section 8	Henry Rankin	1835	36	3600	1835
Section 9	Henry Rankin	1835	36	3600	1835
Section 10	Henry Rankin	1835	36	3600	1835
Section 11	Henry Rankin	1835	36	3600	1835
Section 12	Henry Rankin	1835	36	3600	1835
Section 13	Henry Rankin	1835	36	3600	1835
Section 14	Henry Rankin	1835	36	3600	1835
Section 15	Henry Rankin	1835	36	3600	1835
Section 16	Henry Rankin	1835	36	3600	1835
Section 17	Henry Rankin	1835	36	3600	1835
Section 18	Henry Rankin	1835	36	3600	1835
Section 19	Henry Rankin	1835	36	3600	1835
Section 20	Henry Rankin	1835	36	3600	1835
Section 21	Henry Rankin	1835	36	3600	1835
Section 22	Henry Rankin	1835	36	3600	1835
Section 23	Henry Rankin	1835	36	3600	1835
Section 24	Henry Rankin	1835	36	3600	1835
Section 25	Henry Rankin	1835	36	3600	1835
Section 26	Henry Rankin	1835	36	3600	1835
Section 27	Henry Rankin	1835	36	3600	1835
Section 28	Henry Rankin	1835	36	3600	1835
Section 29	Henry Rankin	1835	36	3600	1835
Section 30	Henry Rankin	1835	36	3600	1835
Section 31	Henry Rankin	1835	36	3600	1835
Section 32	Henry Rankin	1835	36	3600	1835
Section 33	Henry Rankin	1835	36	3600	1835
Section 34	Henry Rankin	1835	36	3600	1835
Section 35	Henry Rankin	1835	36	3600	1835
Section 36	Henry Rankin	1835	36	3600	1835

The above Map of Township N° 11 N, Range N° 12 E, Mer. (Sec. 1 to 36) is truly conformable to the full notes of the survey thereof, on file in the Office, which have been examined and approved.  
 Surveyor General's Office  
 Vincennes, Mar 30 1835  
 M. J. Williams  
 Secy.