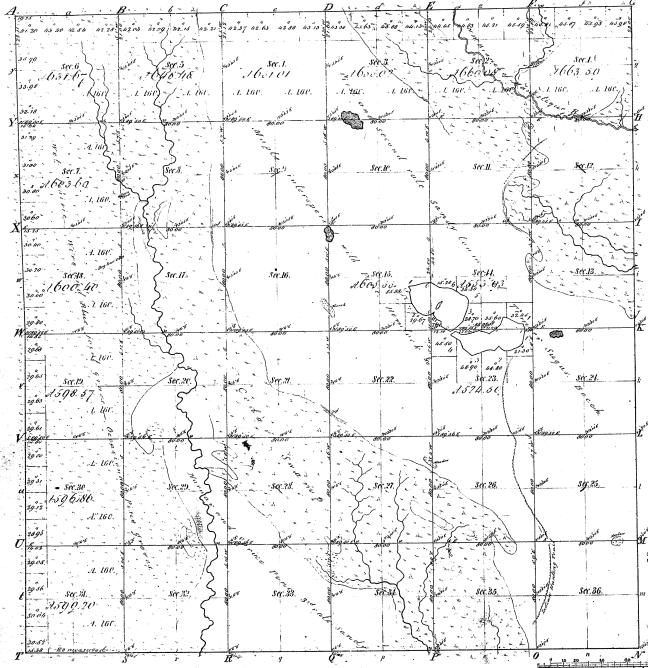


Township 1° 43' N. Range 1° 10' W. Mer. Mich.



Reminders of
 1842
 1843
 1844
 1845
 1846
 1847
 1848
 1849
 1850
 1851
 1852
 1853
 1854
 1855
 1856
 1857
 1858
 1859
 1860
 1861
 1862
 1863
 1864
 1865
 1866
 1867
 1868
 1869
 1870
 1871
 1872
 1873
 1874
 1875
 1876
 1877
 1878
 1879
 1880
 1881
 1882
 1883
 1884
 1885
 1886
 1887
 1888
 1889
 1890
 1891
 1892
 1893
 1894
 1895
 1896
 1897
 1898
 1899
 1900

31-29

37-29

Total number of Acres 22672.55

Survey designated	In Whom Surveyed	Date of Purchase	Amount of Survey	When Surveyed	How Surveyed
Township lines	W.A. Beak	April 1 st 1851	76.84	3 rd Aug. 1851	By G.C. & S.
Subdivisions	A. Merryweather	June 8 th 1859	62.60.82	5 th Aug. 1859	By G.C. & S.

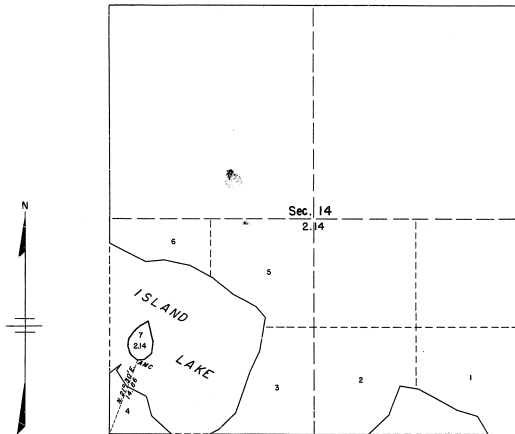
The above copy of Township 1° 43' North of Range 1° 10' West of the Principal Meridian, Michigan, is hereby confirmed to the field notes of the survey thereof on file in this Office, which have been examined and approved.

Surveyor General's Office,
 Detroit July 21. 1861

Charles H. H. H.
 Surveyor

TOWNSHIP 43 NORTH, RANGE 16 WEST OF THE MICHIGAN MERIDIAN, MICHIGAN
 SURVEY OF ISLAND IN ISLAND LAKE, SECTION 14

37-293



0 5 10 20 30 40
 CHAINS

Scale in Chains
 Area Surveyed: 2.14 Acres

This plat represents the survey of an island in Island Lake which was not included in the original survey of the township which is represented on the plat approved July 25, 1851.

Surveyed by Neville E. Shorer,
 Cartographer (Cadastral), on Sept. 8,
 1950, under Special Instructions dated
 April 29, 1950 and Supplemental Special
 Instructions dated August 5, 1950, for
 Group 63, Michigan.

UNITED STATES DEPARTMENT OF THE INTERIOR
 BUREAU OF LAND MANAGEMENT
 Washington, D. C. February 17, 1956

This plat is strictly conformable to the approved field notes, and the survey, having been correctly executed in accordance with the requirements of law and the regulations of this Bureau, is hereby accepted.

For the Director

Earl S. Hamilton
 Cadastral Engineering Staff Officer