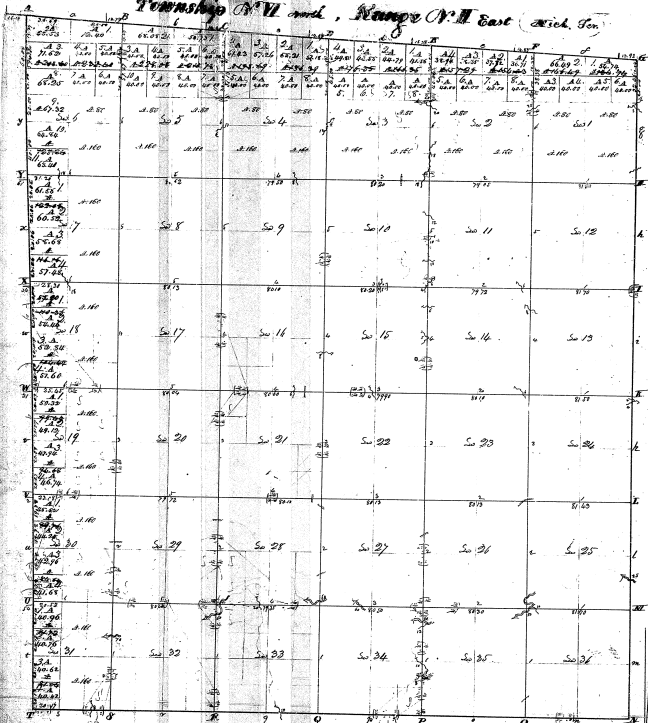


Township 07 N. and Range 07 E. Sec. 1-36



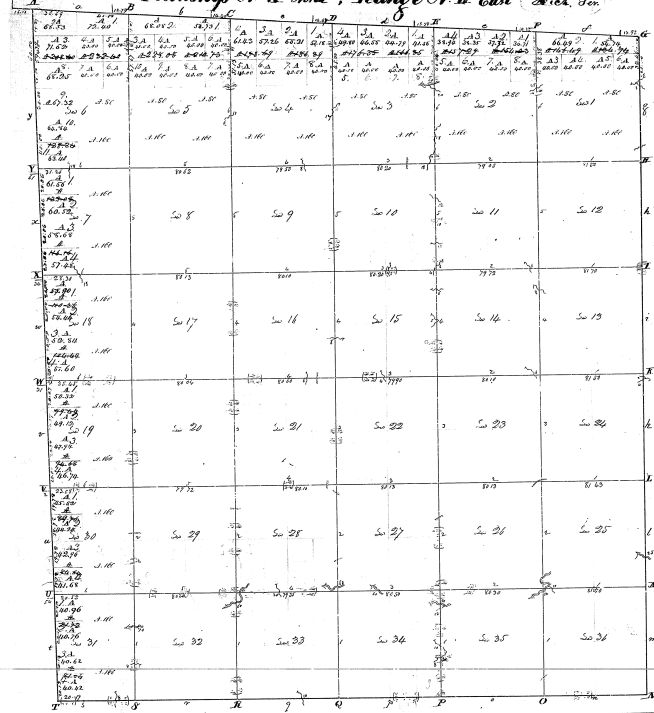
Surveyed in April 1826 by Joseph Wampler D.S.

29-18
29-18

Sells		Contents		Ac.	Ct.
Sec.	Ac.	Ac.	Ac.		
1	104	70	20	6.00	
2	104	69	20	6.00	
3	104	69	20	6.00	
4	104	69	20	6.00	
5	104	69	20	6.00	
6	104	69	20	6.00	
7	104	69	20	6.00	
8	104	69	20	6.00	
9	104	69	20	6.00	
10	104	69	20	6.00	
11	104	69	20	6.00	
12	104	69	20	6.00	
13	104	69	20	6.00	
14	104	69	20	6.00	
15	104	69	20	6.00	
16	104	69	20	6.00	
17	104	69	20	6.00	
18	104	69	20	6.00	
19	104	69	20	6.00	
20	104	69	20	6.00	
21	104	69	20	6.00	
22	104	69	20	6.00	
23	104	69	20	6.00	
24	104	69	20	6.00	
25	104	69	20	6.00	
26	104	69	20	6.00	
27	104	69	20	6.00	
28	104	69	20	6.00	
29	104	69	20	6.00	
30	104	69	20	6.00	
31	104	69	20	6.00	
32	104	69	20	6.00	
33	104	69	20	6.00	
34	104	69	20	6.00	
35	104	69	20	6.00	
36	104	69	20	6.00	
Total				216	72

68 240

Township N. 11 and Range N. 11 East 2nd. Ten



Surveyed in April 1826 by Joseph Wampler S. S.

29-18

Table of Contents			
Section	Acres	Acres	Acres
1	126	24	Sum 250
2	80		20 600
3	126	24	25 600
4	80		30 600
5	220		36 600
6	150	30	35 600
7	80		34 600
8	127	29	37 600
9	80		38 600
10	220		39 600
11	160	35	Sum 20 600
12	80		20 80
13	176	35	Sum 80 600
14	80		30 600
15	220		Sum 21 600
16	180	29	Sum 80 600
17	80		Sum 30 600
18	176	35	Sum 30 600
19	80		Sum 36 600
20	220		Sum 35 600
21	160	35	Sum 36 600
22	80		Sum 37 600
23	180	30	Sum 38 600
24	80		Sum 39 600
25	176	35	Sum 40 600
26	80		Sum 41 600
27	220		Sum 42 600
28	160	35	Sum 43 600
29	80		Sum 44 600
30	176	35	Sum 45 600
31	80		Sum 46 600
32	220		Sum 47 600
33	160	35	Sum 48 600
34	80		Sum 49 600
35	176	35	Sum 50 600
36	80		Sum 51 600
Sum	15000	60	Sum 52 600
Sum	23225	80	Sum 53 600

29-18

Total

29-18