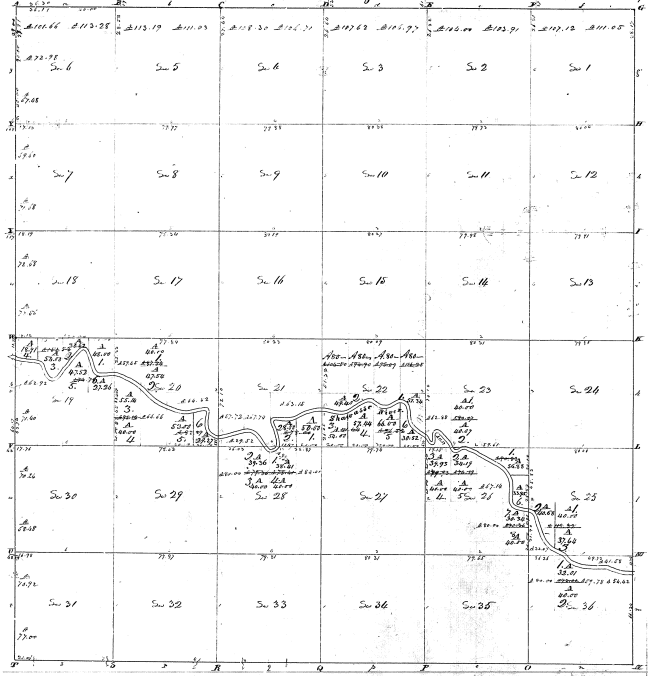


Township N<sup>o</sup> VII R. 12 E. Range N<sup>o</sup> III Base of m. (6614 9-1)



2.2 Miles

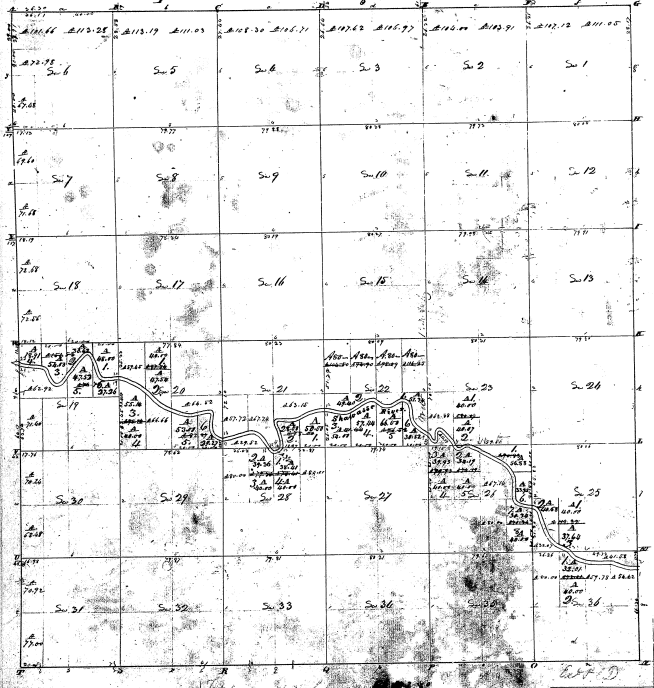
Plat No. 1 - a plat with no reference from Edward Puffer Surveyor General of the United States being state the day of June advertised and out and through the State Surveyor's Office and is hereby that 1<sup>st</sup> 1850 such roads and bounds both natural and artificial are recorded on this plat and described in the list to be made thereof and returned with this plat into the Surveyor General's Office. Certified the 25<sup>th</sup> day of June 1850 -

Wampler D. S.

2111  
29-14

Township No VII Range No III East of the 100th Meridian

27



29-14

29-14

Remains to a northeast and northwest from corner of the lower bound of the 100th Meridian into the day of  
 shall be assessed but not and hereby to the State of Iowa for the purpose of the 1854 Act and such roads  
 and lands both natural and artificial as are represented on the map and divided in the 1854 Act, made thereof and  
 returned with the plat into the Surveyor General's Office on the 20th day of April 1855.

J. Hampler D. C.