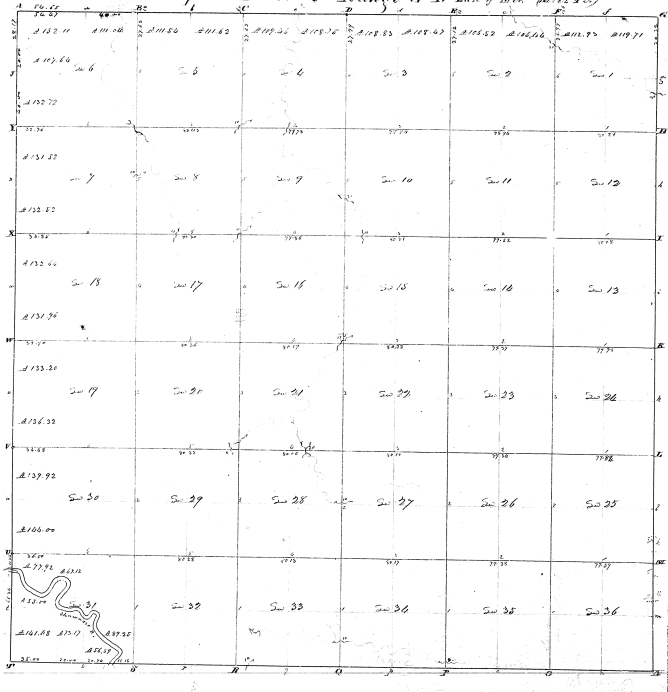


Township N.VII Range E.VI East of Mer. (1812-1820)

11



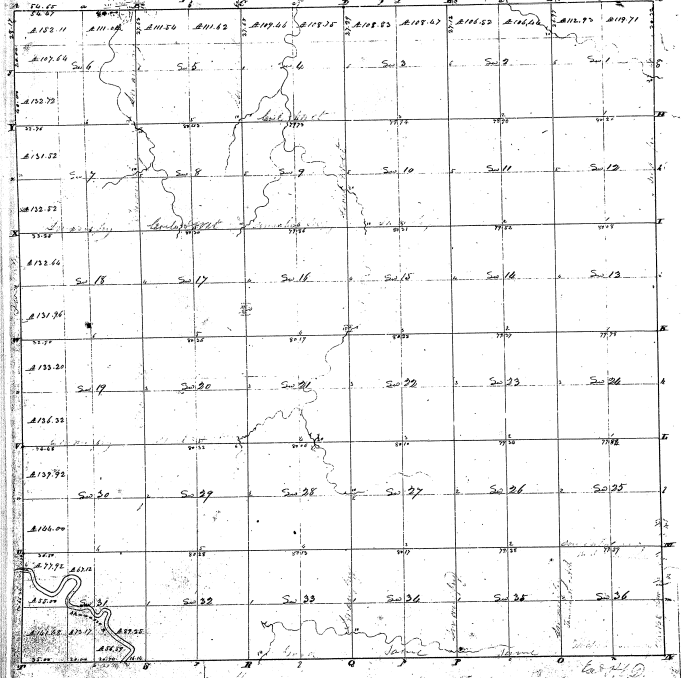
21-10

29-13

Assentment to a landholder with and instructions from the Surveyor General of the United States bearing date the 20th
 June aforementioned laid out and surveyed the above Township, and do hereby that it has been made and
 bound to the State and do hereby as was provided on said plat and recorded in the State records that the
 returned with the plat to the Surveyor General's Office, bearing date the 20th day of June 1822

J. Wampler D.S.

Township N^o VII Range R^o W east of 100th Mer. (Secs. 1-36)



29-13

29-13

Conform to a contract with and instructions from Edward Tappan Surveyor General of the United States bearing into the eye
 those provisions laid out and through the above Inquiry, and do certify that it has been made and
 found to be correct and conform to the instructions on said point and divide in the following manner, and
 conform with the facts in the Surveyor General Office, dated the 22nd day of Nov^r 1852.

Wm. Wampler D. S.