

Township 37 N Range 12 E Sec 10

Description of the soil on the various sections here

Section	Quality of Soil	Remarks
10	10	10
11	11	11
12	12	12
13	13	13
14	14	14
15	15	15
16	16	16
17	17	17
18	18	18
19	19	19
20	20	20
21	21	21
22	22	22
23	23	23
24	24	24
25	25	25
26	26	26
27	27	27
28	28	28
29	29	29
30	30	30
31	31	31
32	32	32
33	33	33
34	34	34
35	35	35
36	36	36
37	37	37
38	38	38
39	39	39
40	40	40

No Notes on Back

1929

Date	N 66 E					Plan line			
	1000	2000	3000	4000	5000	6000	7000	8000	9000
10	7	8	7	6	5	4	3	2	1
11	14	13	14	15	16	17	18	17	16
12	23	28	27	26	25	24	23	22	21
13	32	33	34	35	36	37	38	37	36
14	41	48	47	46	45	44	43	42	41
15	50	53	54	55	56	57	58	57	56

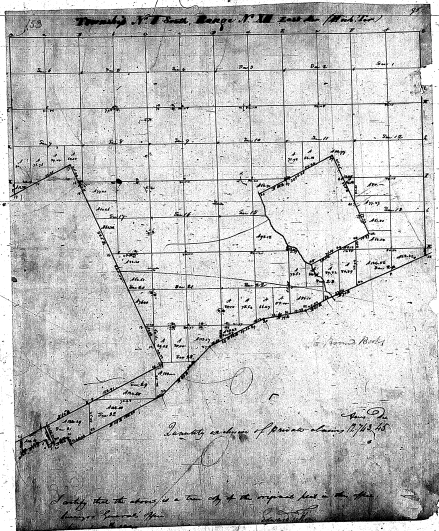
Resolution Ball
10000 miles

98

32-30

32-30-8

Map



Probably outline of ...

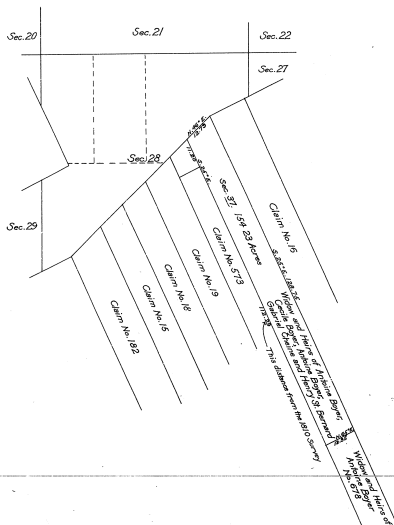
Probably that the above is a ...

from ...

32-30
32-30-8

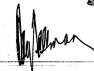
SUPPLEMENTAL PLAT
T. 1 S., R. 12 E., Michigan Meridian,
MICHIGAN.

Scale: 20 chains to an inch.



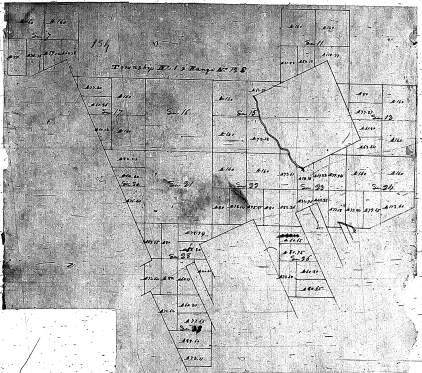
Department of the Interior,
General Land Office,
Washington, D.C., May 21, 1920.

This supplemental plat of T. 1 S., R. 12 E., Michigan Mer., Michigan, is made for the purpose of subdividing the area and legal designation of the tract of land in the rear of the lands confirmed to the Widow and Heirs of Ashina Boyce, No. 672, and is hereby approved.


Commissioner and ex officio
U.S. Surveyor General for Michigan.

S. E.

Mud



Plan of

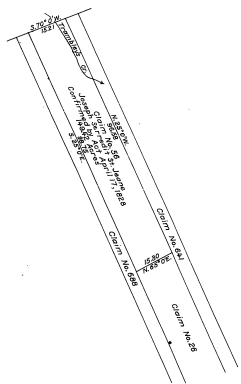
TOWNSHIP No. 1 SOUTH, RANGE No. 12 EAST, OF THE MICHIGAN MERIDIAN, MICHIGAN.

SUPPLEMENTAL PLAT OF CLAIM No. 56

Scale: 20 chains = 1 inch

32-30

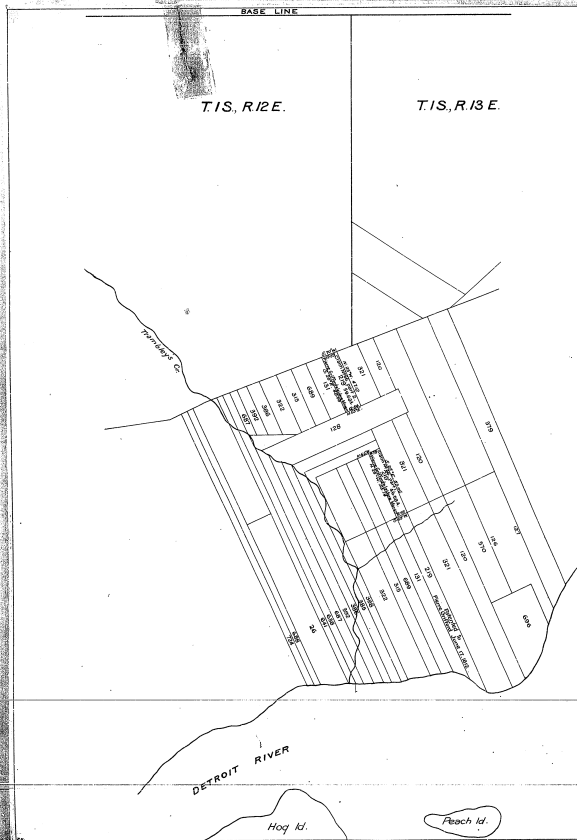
32-30-8



DEPARTMENT OF THE INTERIOR
GENERAL LAND OFFICE
WASHINGTON, D. C., NOVEMBER 3, 1922.

THE ABOVE SUPPLEMENTAL PLAT OF CLAIM NO. 56, T. 1 S., R. 12 E., MICHIGAN MERIDIAN, MICHIGAN, PREPARED FOR THE PURPOSE OF SHOWING DESIGNATION AND AREA FOR THE TRACT OF LAND IN THE REAR OF CLAIM NO. 56, CONFIRMED TO JOSEPH BENEDETTI ET. JEANE BY ACT OF APRIL 17, 1820, IS STRICTLY CONFORMABLE TO THE FIELD NOTES OF THE SURVEY THEREOF, EXECUTED BY JOSEPH FLETCHER, D. S., IN 1822, AND HAVING BEEN CORRECTLY PREPARED IN ACCORDANCE WITH THE REGULATIONS OF THIS OFFICE, IS HEREBY APPROVED.

J. H. Anderson
ACTING ASSISTANT COMMISSIONER.



32-30
32-30.8

SUPPLEMENTAL PLAT
OF THE

*Plat of the Additional Donation tracts on the Detroit
river and Lake St. Clair (Michigan No. 49) in T. 1 S., R. 12 & 13 E.,
Michigan Meridian, MICHIGAN.*

*Showing the survey and area of "Claim No. 66" confirmed
to Pierre Griffard and Isidore Monin (American State Papers
Vol. 5, p. 128 (Gales & Seaton's Edition) as executed by Joseph
Fletcher in 1822, and numbered 219, in 2 parts.*

*Note: This supplemental plat is made for the purpose of
furnishing the description of the boundaries and areas of
the two parts of the rear Donation Claim No. 66 of Pierre
Griffard and Isidore Monin, and numbered 219, in the
survey of said claim by Joseph Fletcher, in 1822.*

Area part 1 46.58 Claim 219
Area part 2 53.68
Aggregate 100.26 acres.

Scale: 40 chs. to an inch.

Department of the Interior,
General Land Office,
Washington, D. C., Feb. 12, 1913.

This supplemental plat of the rear Donation Claim No. 219, in Townships 1 South,
Ranges 12 and 13 East, Michigan Meridian, Michigan, is strictly conformable to the
field notes of the survey and plat thereof on file in this office and is hereby approved
in accordance with section 2219 U.S. Revised Stats, 389.

Ed. Prindle
Acting Commissioner and Ex. officio
U.S. Surveyor General for Michigan.