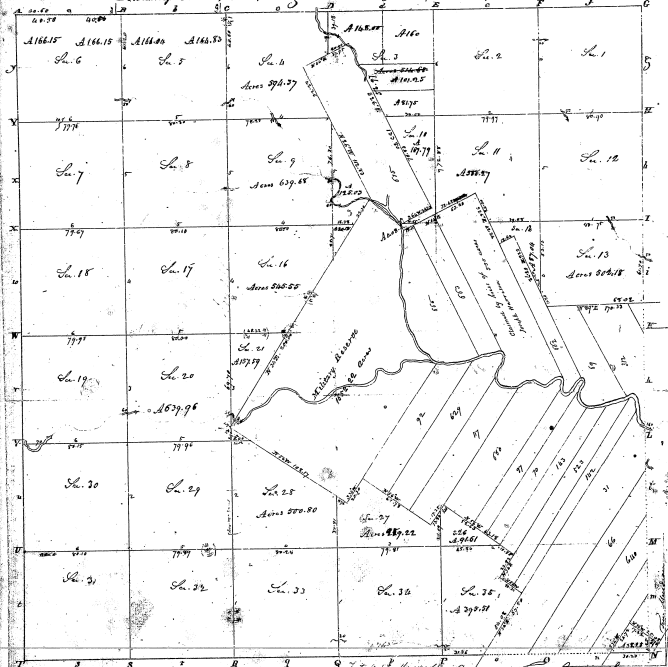


Township N. 7. E. South, Range N. 1. E. East of Mer. (Miss. Ter.)



32-33
32-33

Permanently a constant and undisturbed...
 General of the...
 This and...
 and described on the...
 Surveyor General's office
 certified this 20th day of May 1867
 J. P. [Signature]

32-33

32-33

SUPPLEMENTAL PLAT

of

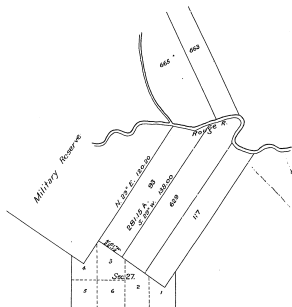
Private Claim No. 33.

T.2S., R.10E., Michigan Meridian,

MICHIGAN.

erroneously shown on the plats of this township
approved Feb. 20, 1818, as claim No. 32.

Scale: 40 chs. to an inch.



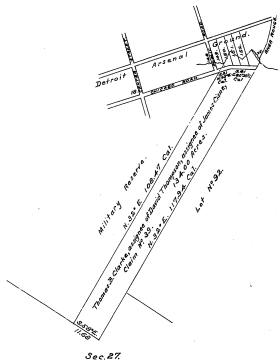
Department of the Interior,
General Land Office,
Washington, D.C., Nov. 14, 1913.

I hereby certify that the above is a plat made in accordance with Section 2819
U.S. Revised Statutes, viz.: Private Claim No. 33, T.2S., R.10E., Michigan Meridian, Michigan,
erroneously shown on the plats of this township approved Feb. 20, 1818, as claim No. 32,
is strictly conformable to the field notes of survey thereof on file in this office, which
have been examined and approved.

[Signature]
Commissioner and ex officio
U.S. Surveyor General for Michigan.

Supplemental Plat
Township N^o 2 South, Range N^o 10 East of the Michigan Meridian, Michigan.

Scale 20 Chains to an inch.



Claim N^o 23, surveyed by Sylvester Sibby, 2d, in 1823
 Detroit Arsenal Ground, surveyed by John F. Moore, U.S.S., in 1876.

102

The above plat of claim N^o 23 of Thomas B. Clarke, assignee of David Thompson, assignee of James Case, in Township N^o 2 South, Range N^o 10 East, Michigan Meridian, Michigan, made in conformity to the Act of Congress, approved July 2, 1836, entitled "An act to provide for the issuing a land patent to Thomas B. Clarke," is strictly conformable to the field notes of the survey thereof on file in this office, which have been examined and approved.

General Land Office,
 Washington, D.C., July 3, 1912.

Charles L. Jones
 Surveyor General for Michigan.