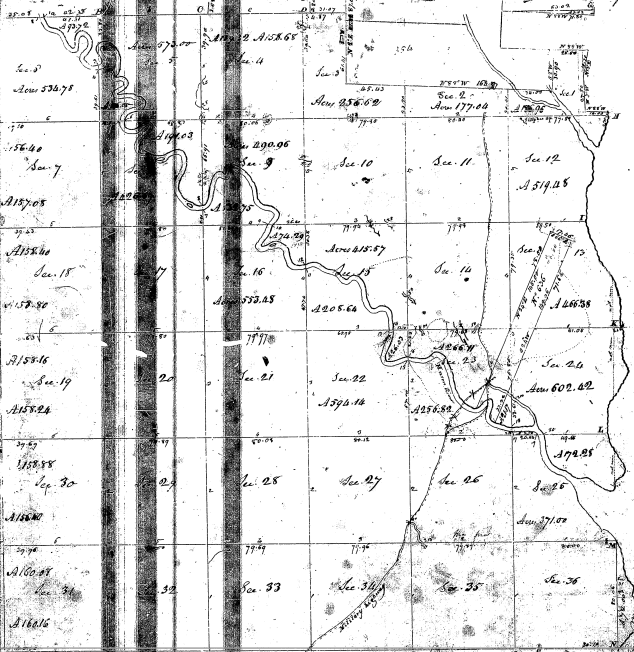


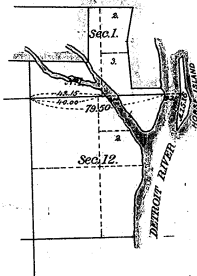
Township N. 2. South, Range N. 2. E. of Mer. (Mch. Ter.)



Be it remembered that the within and substantiated from before the Surveyor General of the United States, my state the day of _____ 1868, I have examined this map and found the same correct and true, and do hereby certify that it is a true and correct map of the within and substantiated from before the Surveyor General of the United States, my state the day of _____ 1868.

32-70
32-38

PLAT OF AN ISLAND EAST OF SEC'S. 1 AND 12, T. 5 S. R. 10 E.
State of Michigan.



Scale 40 Chains to an Inch.

Dept. of the Interior,
General Land Office,
April 2nd, 1885.

The above diagram of an Island east of Sections 1 and 12, T. 5 S. R. 10 E. in the State of Michigan, is a correct Plat of Survey executed by Elijah J. Goodell, U.S. Deputy Surveyor, pursuant to instructions received from the Commissioner of the General Land Office, bearing date 20th. day of January, 1885, and is strictly conformable to the field notes of the Survey thereof which have been examined and approved.

Am. A. Sparks
Commissioner
and Ex-Officio. Surv. Genl. of Michigan.

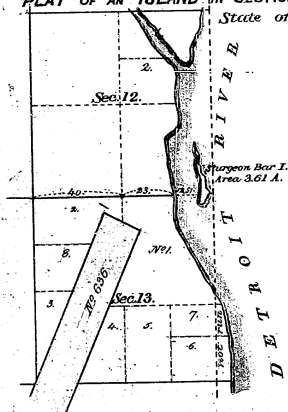
Original

3238

NO. 6

Orig.

PLAT OF AN ISLAND IN SECTIONS 12 AND 13, T. 5 S. R. 10 E.
State of Michigan.



42134 32-38

Scale 40 Chs. to an Inch.

Dept. of the Interior,
General Land Office,
July 30th. 1884.

The above Diagram of an Island in Sections 12 & 13, T. 5 S. R. 10 E. in the State of Michigan is a correct Plot of Survey executed by Elijah J. Goodell, U.S. Deputy Surveyor, in pursuance of Instructions received from the Commissioner of the General Land Office, bearing date the 15th. day of May, 1884; and is strictly conformable to the field notes thereof, which have been examined and approved.

A. C. McFarland
Commissioner
& Ex-Officio Surd Genl. of Michigan.

*Corrected from 63 chs
meanders H. 2. 87*

a