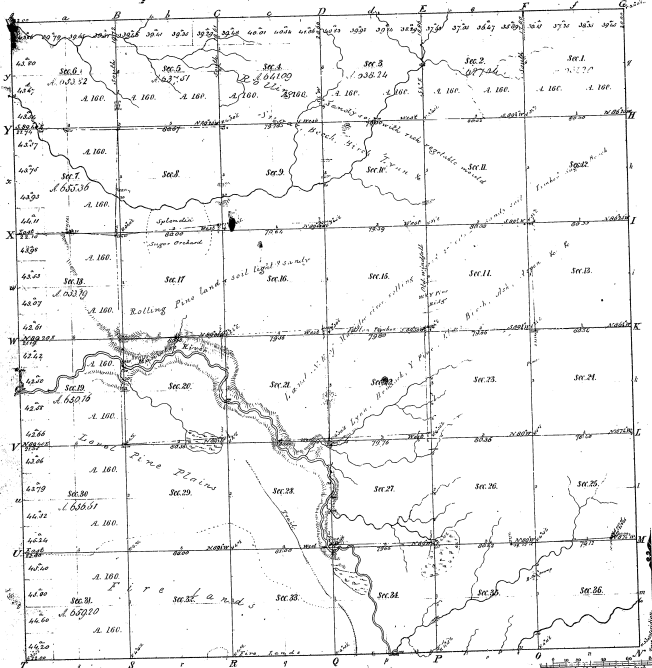


Re-survey
Township 37° 21' N. Range 19° 12' W. Mer. Mich.



The lines represented on this map are with the lines of the original survey
and should be placed in this position

Mileage of	Road Course	1854	1854	1854	1854
15 10					

16-40

Total number of Acres 93,103.62

Survey Designated	By Whom Surveyed	Date of Original	When Surveyed	Area of Survey
Township Area	John Beitch	Nov. 21 1836	1854	93,103.62
Subdivisions	Orange Bradley	April 29 1861	1861	24 1/2

of the survey
The above copy of Township 37° 21' North of Range 19° 12' West of the
Principal Meridian Michigan is hereby approved to the field notes
of the survey thereof on file in this office which have been examined and approved.
Orange Bradley
Detroit, Nov 1, 1861

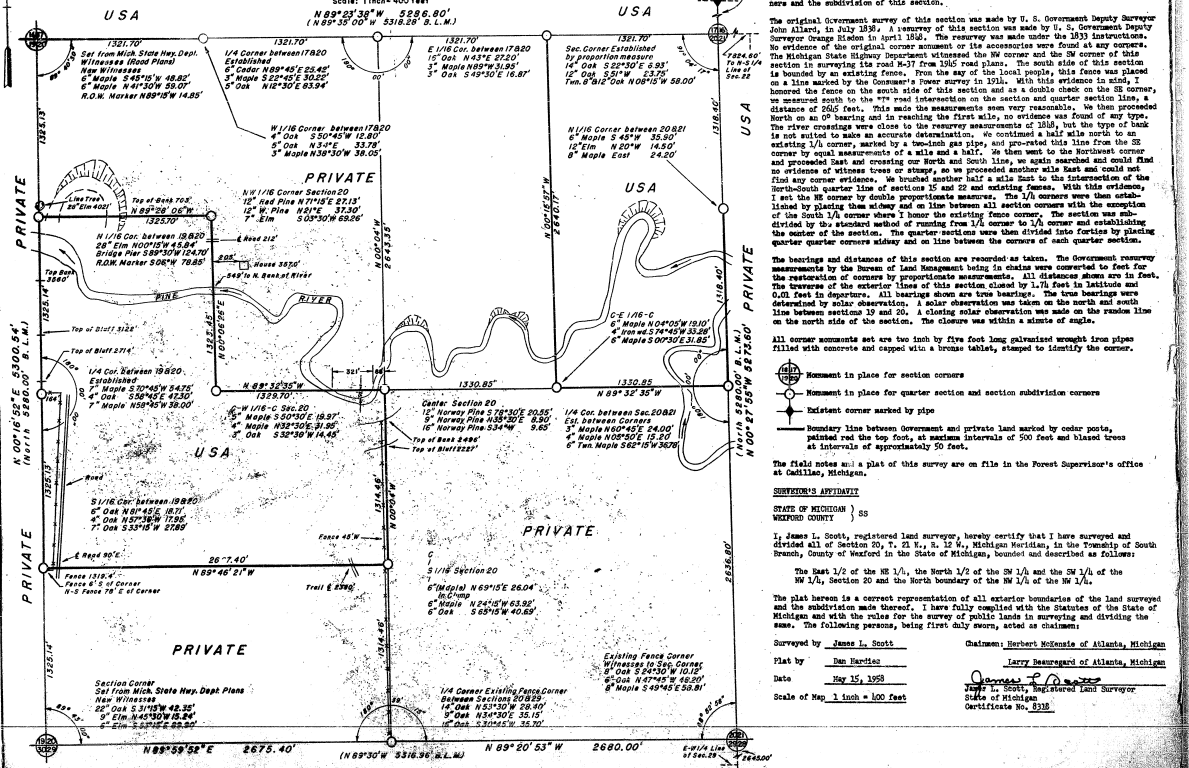
Leitch, (for Beitch)

Lucius Lyon, Register

PLAT OF SURVEY U. S. GOVERNMENT LAND

Being the E 1/2 of the NE 1/4, N 1/2 of the SW 1/4, and the SW 1/4 of the NW 1/4, in
Section 20, Township 21 North, Range 12 West, Michigan Meridian, Township
of South Branch, County of Xeford, State of Michigan

400 200 0 400 800 1200 Feet
Scale: 1 inch = 400 Feet



SPECIAL NOTES
This survey was made at the request of the U. S. Department of Agriculture, Forest Service, for the purpose of restoring and perpetuating the corners and boundary lines of U. S. Government land being the East 1/2 of the Northwest 1/4, Section 20, Township 21 North, Range 12 West, South Branch Township, Xeford County, Michigan.
Prior to restoring the lost corners and subdividing this section, I reviewed the manner in which this Township was originally modified and obtained all records of this particular survey. I assembled copies of existing field notes, plats, and surveys of record and compared the same with evidence on corner, information and status of existing boundaries between properties which would affect or could be affected by the restoration of lost corners and the subdivision of this section.

The original corner survey of this section was made by U. S. Government Deputy Surveyor John Alamy, in July 1851. A survey of this section was made by U. S. Government Deputy Surveyor Orange Hildon in April 1854. The recovery was made under the 1853 instructions. No evidence of the original corner monument or the accessories were found at any corners. The Michigan State Highway Department witnessed the NW corner and the SW corner of this section in 1921. The NW corner is on the NW 1/4 of the NW 1/4 of the Southwest 1/4 and is bounded by an existing fence. From the way of the local people, this fence was placed on a line varied by the cornerman's lower survey in 1921. With this evidence in mind, I determined the fence on the east side of this section and as a double check on the SE corner, we measured south to the 775 rod intersection on the section and quarter section line, a distance of 2065 feet. This made the measurements made by the cornerman. We then proceeded North on an 8° bearing and in reaching the first mile, no evidence was found of any type. The river crossing was close to the recovery area but the type of crossing was not determined. We continued a little half mile north to an existing 1/4 corner, marked by a concrete dam pipe, and approximately 1/2 mile from the SE existing 1/4 corner, marked by a square section of a mill and a kiln. We then went to the Northwest corner and proceeded East and crossing our North and South line, we again searched and could find no evidence of witness trees or stumps, so we proceeded south with the existing evidence. I set the NE corner by double proportionate measure. The 1/4 corners were then established by placing them midway and on line between all section corners with the exception of the South 1/4 corner where I honor the existing fence corner. The section was subdivided by the standard method of running from 1/4 corner to 1/4 corner and establishing the center of the section. The quarter sections were then divided into fourths by placing quarter quarter corners midway and on line between the corners of each quarter section.

The bearings and distances of this section are recorded as taken. The Government survey measurements by the Bureau of Land Management being in chain were converted to feet for the restoration of corners by proportionate measurements. All distances shown are in feet. The traverse of the exterior lines of this section closed by 1.71 feet in latitude and 0.23 feet in departure. All bearings shown are true bearings. The true bearings were determined by solar observation. A solar observation was taken on the north and south line between sections 19 and 20. A closing solar observation was made on the random line on the north side of the section. The closure was within a minute of angle.
All corner monuments set are two inch by five foot long galvanized wrought iron pipes filled with concrete and capped with a bronze ball, stamped to identify the corner.

- Monument in place for section corners
- Monument in place for quarter section and section subdivision corners
- ◆ Existing corner marked by pipe
- Boundary line between Government and private land marked by cedar posts, painted and the top foot, at medium intervals of 500 feet and blazed trees at intervals of approximately 50 feet.

The field notes and a plat of this survey are on file in the Forest Supervisor's office at Cadillac, Michigan.

SUBVENDOR'S AFFIDAVIT

STATE OF MICHIGAN) SS
WESTERN COUNTY)
I, James L. Scott, registered land surveyor, hereby certify that I have surveyed and divided all of Section 20, T. 21 N., R. 12 W., Michigan Meridian, in the Township of South Branch, County of Xeford, in the State of Michigan, bounded and described as follows:

The East 1/2 of the NE 1/4, the North 1/2 of the SW 1/4 and the SW 1/4 of the NW 1/4, Section 20 and the North boundary of the NW 1/4 of the NW 1/4.

The plat herein is a correct representation of all exterior boundaries of the land surveyed and the subdivision made thereon. I have fully complied with the Statute of the State of Michigan and with the rules for the survey of public lands in surveying and dividing the same. The following persons, being first duly sworn, acted as chainmen:

Surveyed by James L. Scott Chainmen: Herbert McNease of Atlanta, Michigan

Plat by Ben Hardies Larry Beauregard of Atlanta, Michigan

Date May 15, 1958

Scale of Map 1 inch = 100 Feet

James L. Scott, Registered Land Surveyor
State of Michigan
Certificate No. 8238