

**SURVEY &
REMONUMENTATION**

APR 24 1995

COMMISSION

1994 Alcona Remonumentation Corner

LAND CORNER RECORDATION CERTIFICATE
Filing Requirement of Act 74, Mich. P.A. 1970

Alcona County
Remonumentation
Liber _____ Page 89
RECORDED _____

For corners in

<u>Alcona</u> <small>(County)</small>	Located In:	Corner Code #
1. Public Land Survey	T <u>25N</u> R <u>9E</u>	<u>I-5</u>
	T _____ R _____	_____
	T _____ R _____	_____
	T _____ R _____	_____
2. Property Controlling in Section	S _____ T _____ R _____	_____
	S _____ T _____ R _____	_____
3. Miscellaneous Property in Sec.	S _____ T _____ R _____	_____
	S _____ T _____ R _____	_____
4. Lot No. _____, Recorded Plat _____		
5. Private Claims _____		

APPROVED LAND CORNER
P.A. 345 of 1990
ALCONA COUNTY
Date: 12-19-94
County Rep: E.T.L.

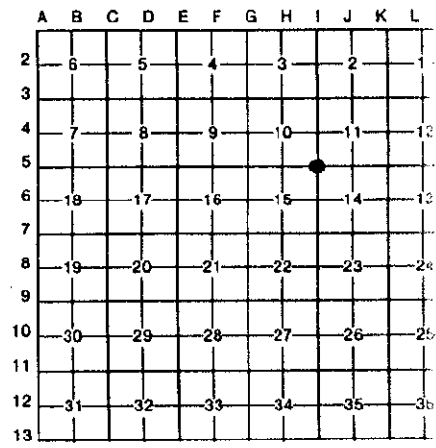
Dec 19 12 16 PM '94

Janis A. Guthrie
REGISTER OF DEEDS
ALCONA COUNTY, MICHIGAN

E.T.L.
Register of Deeds Stamp & File Number

I, David B. Guthrie in a field survey on August 25, 19 94, do hereby certify that under requirements of P.A. 74, Michigan P.A. of 1970, the corner points mentioned in lines 1 and 2 above were in conformance with regulations and rules therefore as required in the current manual of survey instructions of the United States Department of the Interior, Bureau of Land Management or by a decree of a Court of Law and/or that the corner points mentioned in lines 3, 4 and 5 above were in conformance with the rules of the Michigan Board of Land Surveyors or by a Decree of a Court of Law; established, re-established, monumented, re-monumented, recovered, found as expressed below:

NOTE: Not more than 4 corners, all in the same town and range, may be recorded on this certificate.



- A. Description of original monument and accessories and/or subsequent restoration:
- 1843: G.L.O. Survey by Mullett & Burt - Set Post and Referenced
W. Birch 10 - S60W - 31 / Tam 09 - N48W - 19
 - 1963: Survey by James L. Scott
 - 1965: Survey by Robert S. Scott

- B. Description of corner evidence found and/or method applied in restoring or reestablishing corner:
- 1994: Found Concrete Monument

- C. Description of monument for corner and accessories established to perpetuate locating the position of the corner:
- 1994: Replaced with a 5/8" Iron Rod with a 3" Aluminum Cap stamped to identify the Corner.
Referenced -
N05°E - 20" Oak - 18.58 Feet
N27°W - 8" Maple in clump - 33.97 Feet
N72°W - 7" Apple - 35.86 Feet
N68°E - 12" Maple in clump - 48.83 Feet



Signed by David B. Guthrie Date Dec. 16, 1994

Surveyor's Michigan License No. 22435