

**SURVEY & REMONUMENTATION**

MAR 04 1998

**SECTION**

1997 Alcona County Remonumentation Corner  
**LAND CORNER RECORDATION CERTIFICATE**  
 Filing Requirement of Act 74, Mich. P.A. 1970

**APPROVED LAND CORNER**  
 P A 345 of 1990  
 ALCONA COUNTY

Date 7/20/97  
 County Rep. D. B. Co

For corners in

Alcona

(County)

Located In:

Corner Code #

1. Public Land Survey	T <u>26</u> NR <u>8E</u>	<u>C-3</u>
	T <u>   </u> R <u>   </u>	<u>   </u>
	T <u>   </u> R <u>   </u>	<u>   </u>
	T <u>   </u> R <u>   </u>	<u>   </u>
2. Property Controlling in Section	S <u>   </u> T <u>   </u> R <u>   </u>	<u>   </u>
	S <u>   </u> T <u>   </u> R <u>   </u>	<u>   </u>
3. Miscellaneous Property in Sec.	S <u>   </u> T <u>   </u> R <u>   </u>	<u>   </u>
	S <u>   </u> T <u>   </u> R <u>   </u>	<u>   </u>

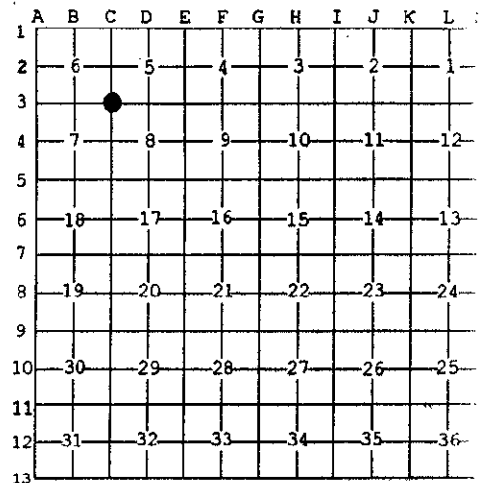
**RECORDED**  
 Date 10-31-1997  
 REMON LIBER 1 PAGE 281  
 Time 3:30 P.M.  
*Doris A. Gauthier*  
 Doris A. Gauthier  
 REGISTER OF DEEDS

Register of Deeds Stamp & File Number

4. Lot No. \_\_\_\_\_, Recorded Plat \_\_\_\_\_  
 5. Private Claims \_\_\_\_\_

I, Daniel T. Kibbe, in a field survey on July 12, 1997 do hereby state that under requirements of P.A. 74, Michigan P.A. of 1970, the corner points mentioned in lines 1 and 2 above were in conformance with regulations and rules therefore as required in the current manual of survey instructions of the United States Department of the Interior, Bureau of Land Management or by a decree of a Court of Law and /or that the corner points mentioned in lines 3, 4 and 5 above were in conformance with the rules of the Michigan Board of Land Surveyors or by a Decree of a Court of Law; established, re-established, monumented, recovered, found as expressed below:

NOTE: Not more than 2 corners, all in the same town and range, may be recorded on this certificate.



**A. Description of original monument and accessories and/or subsequent restoration:**

- 1838: GLO Survey by Lewis Clason - Set post at sec. corner, referenced: Y. Pine 20 - N73E - 19 Y. Pine 12 - N27W - 19.
- 1962: Norman C. Caldwell corner record - 4"x4" con. mon. Thought to be a bad corner set in 1958 referenced: N60E - 8.88 - 14" Oak / S40E - 27.12 - 21" Tr. Oak / S35W - 23.55 - 4" Oak
- 1964: MDOT Survey - Fd. 4"x4" co. mon. w/1/2" pipe, referenced: N60E - 8.88 - 14" Oak, S40E - 27.21" Tr. Oak / S25W - 23.55 - 4" Oak.
- 1988: Survey and L.C.R.C. by Robert F. Mitchell - Set con. mon. w/brass cap, referenced: N49W - 10" W. Pine - 49.65' / N21W - 12" W. Pine - 54.35' / S50E - 14" Red Oak - 27.00' / S47W - 12" Aspen - 37.35'.

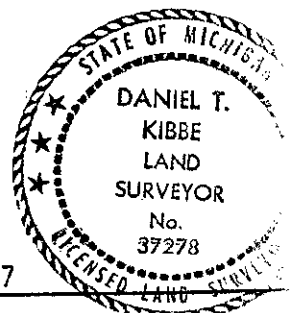
**B. Description of corner evidence found and/or method applied in restoring or reestablishing corner:**

1997: Found concrete monument with brass cap

This corner position is compatible with county and local surveys. This corner position is accepted as a careful and faithful perpetuation of the position of the original corner.

**C. Description of monument for corner and accessories established to perpetuate locating the position of the corner:**

1997: Found concrete monument with brass cap. Fence line to the South and West.  
 Referenced:  
 N46W-79.80'-PK with tag in 14" white pine  
 N45W-8.79'-Found PK with tag 22435 in 18" oak  
 S50E-27.00'-Found spike in 12" oak  
 S40W-23.59'-Found nail with tag in 8" oak



Signed by *Daniel T. Kibbe*  
 Surveyor's Michigan License No. 37278

Date October 22, 1997