

SURVEY & REMONUMENTATION

MAR 04 1998

1997 ALCONA COUNTY REMONUMENTATION CORNER

LAND CORNER RECORDATION CERTIFICATE

Filing Requirement of Act 74, Mich. P.A. 1970

Alcona County Remonumentation Liber 1 Page 248

RECORDED August 25, 1:00 p.m. 97

SECTION

For comers in

Alcona
(County)

Located In:

Corner Code #

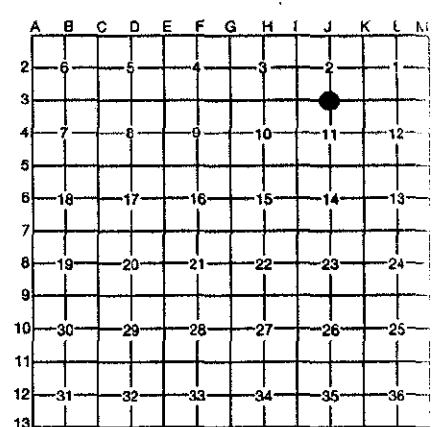
1. Public Land Survey	T	<u>27N</u>	R	<u>7E</u>	J-3
	T	_____	R	_____	Hawas Twp.
	T	_____	R	_____	_____
	T	_____	R	_____	_____
2. Property Controlling in Section	S	_____	T	_____	_____
	S	_____	T	_____	_____
3. Miscellaneous Property in Section	S	_____	T	_____	_____
	S	_____	T	_____	_____

APPROVED LAND CORNER
P. A. 345 of 1990
ALCONA COUNTY
Date 8/17/97
County Rep. [Signature]

[Signature]
REGISTER OF DEEDS

Register of Deeds Stamp & File Number

4. Lot No. _____, Recorded Plat _____
5. Private Claims _____



I, Thomas L. Fabis, in a field survey on June 12, 1997, do hereby certify that under requirements of P.A. 74, Michigan P.A. of 1970, the corner points mentioned in lines 1 and 2 above were in conformance with regulations and rules therefore as required in the current manual of survey instructions of the United States Department of the Interior, Bureau of Land Management or by a decree of a Court of Law and/or that the corner points mentioned in lines 3, 4 and 5 above were in conformance with the rules of the Michigan Board of Professional Surveyors or by a Decree of a Court of Law; established, re-established, monumented, re-monumented, recovered, found as expressed below:

NOTE: Not more than 4 comers, all in the same town and range, may be recorded on this certificate.

- A. Description of original monument and accessories and/or subsequent restoration:**
- 1840: G.L.O. Survey Thomas Pattison Set corner & referenced.
 - 1947: Third Add. to Backus Beach Plat (L.1 P.120) John Holmes Uses corner.
 - 1948: Fourth Add. to Backus Beach Plat (L.1 P.138) John Holmes Uses corner.
 - 1955: Birchwood Beach Plat (L.1 P.159) R.S. Scott Uses corner.
 - 1968 & 1972: Surveys W.O. 1-727 and L.166 P.247 James Scott Uses corner.
 - 1978: Survey L.172 P.727 David Guthrie Found Conc. Mon. & referenced.
 - 1990: Survey L.237 P.487 & L.C.R.C. L.1 P.425 Thomas Fabis Found Conc. Mon. & referenced.
 - 1993: Surveys L.266 P.740 & L.266 P.736 Thomas Fabis Found Conc. Mon. & referenced.
 - 1994: MDNR Survey Carl Johnson Found Conc. Mon.

- B. Description of corner evidence found and/or method applied in restoring or reestablishing corner:**
- 1997: Found Conc. Mon. and the following witnesses: 12" Blazed Cedar N35E 24.34', 12" Blazed Cedar S50E 29.81', Exis. tag in 8" Cedar S80E 5.86', and 1 1/2" Pipe Due East 15.67'.

The position of this corner is compatible with the local surveys mentioned above and is accepted as a careful and faithful perpetuation of the position of the original corner.

- C. Description of monument for corner and accessories established to perpetuate locating the position of the corner:**
- 1997: Set 3" dia. alum. cap, stamped to identify the corner over the existing 4" dia. concrete monument.
- Witnesses are:
- 12" Blazed Cedar - N35E 24.34'
 - 12" Blazed Cedar - S50E - 29.81'
 - 8" Cedar - S80E - 5.86'
 - 1 1/2" Pipe - Due East - 15.67'



Signed by Thomas L. Fabis Date August 15, 1997
Surveyor's Michigan License No. 31591