

OCT 26 1995

1995 ALCONA COUNTY REMONUMENTATION CORNER

RECORDED

COMMISSION

LAND CORNER RECORDATION CERTIFICATE
Filing Requirement of Act 74, Mich. P.A. 1970

Oct 22 36 PM '95

For corners in

Table with columns: Alcona (County), Located In, Corner Code #. Includes entries for Public Land Survey and Property Controlling in Section.

Signature of Dennis A. Pattison, REGISTER OF DEEDS, ALCONA COUNTY, MICHIGAN

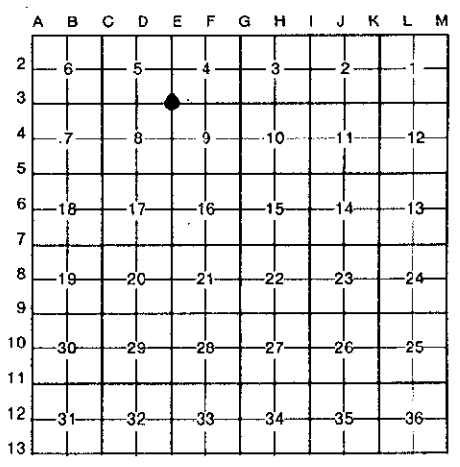
APPROVED LAND CORNER P A 345 of 1990 ALCONA COUNTY

Date: 10-2-95

Register of Deeds Stamp & File Number

- 4. Lot No. Recorded Plat
5. Private Claims

I, Thomas L. Fabis, in a field survey on September 15, 1995, do hereby certify that under requirements of P.A. 74, Michigan P.A. of 1970, the corner points mentioned in lines 1 and 2 above were in conformance with regulations and rules...



NOTE: Not more than 4 corners, all in the same town and range, may be recorded on this certificate.

- A. Description of original monument and accessories and/or subsequent restoration:
1840: G.L.O. Survey by Thos. Pattison - Set post & referenced: (Beech 18 - N3W - 50, Maple 16 - S15E - 12)
1889+: County Survey - Describes it as a Gray Boulder 10x20, glass under it with "x" on top and referenced: (W. Pine stump 40 - S51W - 90)
1988: L.C.R.C. Liber 1 Page 362 and Recorded Survey Liber 224 Pages 889 thru 892 by Robert F. Mitchell - Set 5"x36" Conc. Monument w/Brass cap for the U.S.D.A. and referenced.

- B. Description of corner evidence found and/or method applied in restoring or reestablishing corner:
1995: Found 5"x36" Conc. Monument w/U.S.D.A. Brass Cap and the following witnesses: Carsonite post - North - 33', 6" Beech - N44E - 115.37', and 8" Beech - N28E - 148.21' as per the 1988 recorded documents of Robert F. Mitchell.

This corner is accepted as a careful and faithful perpetuation of the position of the original corner.

- C. Description of monument for corner and accessories established to perpetuate locating the position of the corner:

1995: Existing 5"x36" Conc. Monument w/U.S.D.A. Brass Cap. Reestablished witnesses are:
Set tag #31591 in 8" Aspen - S45W - 76.90'
Set tag #31591 in P. Pole - N06W - 40.48'
Set tag #31591 in 6" W. Birch - N45W - 64.18'
Set tag #31591 in 5" R. Pine - N30W - 68.79'

Signed by Thomas L. Fabis, Surveyor's Michigan License No. 31591, Date September 27, 1995

