

SURVEY & REMONUMENTATION

MAR 04 1998

1997 ALCONA COUNTY REMONUMENTATION CORNER

SECTION

LAND CORNER RECORDATION CERTIFICATE
Filing Requirement of Act 74, Mich. P.A. 1970

Alcona County Remonumentation
Liber 1 Page 234

| | | | |
|--------------------------------------|--------------------------|-------------|-----------------------|
| For corners in | <u>Alcona</u> | Located in: | Corner Code # |
| | (County) | | |
| 1. Public Land Survey | T <u>28N</u> R <u>7E</u> | | <u>E-6</u> |
| | T _____ R _____ | | <u>Caledonia Twp.</u> |
| | T _____ R _____ | | _____ |
| | T _____ R _____ | | _____ |
| 2. Property Controlling in Section | S _____ T _____ R _____ | | _____ |
| | S _____ T _____ R _____ | | _____ |
| 3. Miscellaneous Property in Section | S _____ T _____ R _____ | | _____ |
| | S _____ T _____ R _____ | | _____ |

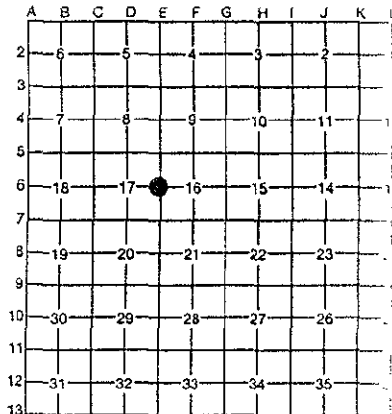
APPROVED LAND CORNER
P.A. 345 of 1990
ALCONA COUNTY
Date 8/15/97
County Rep. [Signature]

RECORDED
August 25 1:00 P.M. 97

[Signature]
REGISTER OF DEEDS

Register of Deeds Stamp & File Number

4. Lot No. _____, Recorded Plat _____
5. Private Claims _____



I, Thomas L. Fabis, in a field survey on June 12, 19 97, do hereby certify that under requirements of P.A. 74, Michigan P.A. of 1970, the corner points mentioned in lines 1 and 2 above were in conformance with regulations and rules therefore as required in the current manual of survey instructions of the United States Department of the Interior, Bureau of Land Management or by a decree of a Court of Law and/or that the corner points mentioned in lines 3, 4 and 5 above were in conformance with the rules of the Michigan Board of Professional Surveyors or by a Decree of a Court of Law; established, re-established, monumented, re-monumented, recovered, found as expressed below:

NOTE: Not more than 4 corners, all in the same town and range, may be recorded on this certificate.

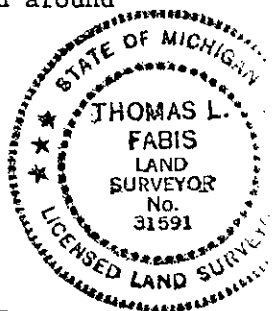
- A. Description of original monument and accessories and/or subsequent restoration:**
 1840: G.L.O. Survey Thomas Pattison Set post & referenced: W. Pine 8 N69E 15, do 36 S70W 30
 1944: Wright's Retreat Plat (L.1 P.101) Jos. McNeil Used corner.
 1968: Ridgeway Estates No. 2 Plat (L.2 P.76) Richard Miller Used corner.
 1970: Kenrose Plat (L.2 P.87) Thomas Hendricks Used corner.
 1972: Survey (L.152 P.467) Ed LaCross of Feldhauser Assoc. Found Iron.
 1973: Survey W.O. 1-1033 James Scott Found RR Spike.
 1978: Survey W.O. 1-1212 David Guthrie Found RR Spike & referenced.
 1982 thru 1996: Surveys by Duane MacNeill: (L. 193 P. 930, L. 218 P. 650, L. 218 P. 649, L. 200 P. 16, L. 200 P. 17, L. 218 P. 651, L. 218 P. 648, & L. 298 P. 387.) Found RR Spike.

- B. Description of corner evidence found and/or method applied in restoring or reestablishing corner:**
 1997: Found RR Spike 0.5' East of Rd. centerline Fence line to the West. Found 2 witnesses: N82W Fe. Cor. 32.21', East Oak Stump 48.35', indicating this is the same corner position used by the surveyors mentioned above.

The position of this corner is accepted as a careful and faithful perpetuation of the position of the original corner.

- C. Description of monument for corner and accessories established to perpetuate locating the position of the corner:**
 1997: Removed existing RR Spike and replaced it with a 1/2" iron rod with a 3" dia. brass cap, stamped to identify the corner. A monument box was placed around the corner.

Witnesses are:
 Exis. P.K. nail in Fe. Cor. Post - N82W - 32.21'
 Set tag P.S. #31591 in 7" Oak - N42E - 43.68'
 Set tag P.S. #31591 in 7" R. Pine - S70E - 31.45'
 Set tag P.S. #31591 in 9" Oak - S60W - 59.75'



Signed by Thomas L. Fabis Date August 15, 1997

Surveyor's Michigan License No. 31591

REMONUMENTATION

FORM APPROVED BY MICHIGAN STATE BOARD OF PROFESSIONAL SURVEYORS, JAN. 28, 1971
REVISED MAY 14, 1979
REVISED JAN. 1983

NOV 14 1997
COMMISSION