

SURVEY & REMONUMENTATION

MAR 04 1998

1997 ALCONA COUNTY REMONUMENTATION CORNER

Alcona County
Remonumentation
Liber 1 Page 233

SECTION

LAND CORNER RECORDATION CERTIFICATE

Filing Requirement of Act 74, Mich. P.A. 1970

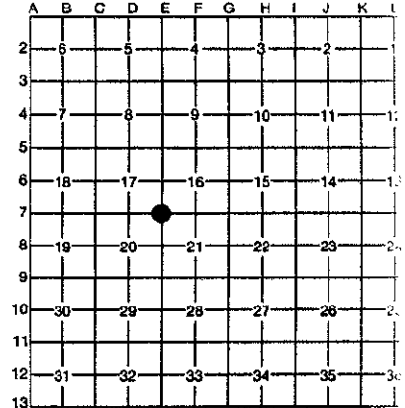
For corners in	Alcona (County)	Located In:	Corner Code #
1. Public Land Survey	T <u>28N</u> R <u>7E</u>		<u>E-7</u>
	T _____ R _____		<u>Alcona Twp. &</u>
	T _____ R _____		<u>Caledonia Twp.</u>
	T _____ R _____		_____
2. Property Controlling in Section	S _____ T _____ R _____		_____
	S _____ T _____ R _____		_____
3. Miscellaneous Property in Section	S _____ T _____ R _____		_____
	S _____ T _____ R _____		_____

APPROVED LAND CORNER
P.A. 345 of 1990
ALCONA COUNTY
Date: 8/13/97
County Rep 8/13/97

RECORDED
August 25 1:00 P.M. 97

Thomas L. Fabis
REGISTER OF DEEDS
Register of Deeds Stamp & File Number

4. Lot No. _____, Recorded Plat _____
5. Private Claims _____



I, Thomas L. Fabis, in a field survey on June 12, 1997, do hereby certify that under requirements of P.A. 74, Michigan P.A. of 1970, the corner points mentioned in lines 1 and 2 above were in conformance with regulations and rules therefore as required in the current manual of survey instructions of the United States Department of the Interior, Bureau of Land Management or by a decree of a Court of Law and/or that the corner points mentioned in lines 3, 4 and 5 above were in conformance with the rules of the Michigan Board of Professional Surveyors or by a Decree of a Court of Law; established, re-established, monumented, re-monumented, recovered, found as expressed below:

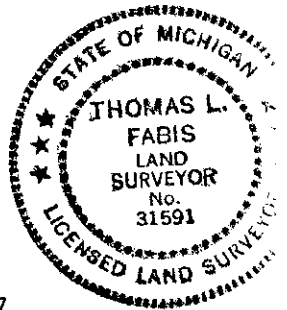
NOTE: Not more than 4 corners, all in the same town and range, may be recorded on this certificate.

- A. Description of original monument and accessories and/or subsequent restoration:**
 1840: G.L.O. Survey Thomas Pattison Set post & referenced: Cedar 8 N52E 5, Ash 7 S36W 13
 1965: Westwood Heights Subd. Plat Thomas Hanson Makes tie to corner from the North
 1977: Survey Liber 169 Page 67 Duane MacNeill Makes tie to corner from the North

- B. Description of corner evidence found and/or method applied in restoring or reestablishing corner:**
 1997: Found concrete monument at intersection of N-S fence wires and E-W fence wires. Long white board next to monument. No existing witnesses.

The position of this corner is compatible with the local surveys mentioned above and is accepted as a careful and faithful perpetuation of the position of the original corner.

- C. Description of monument for corner and accessories established to perpetuate locating the position of the corner:**
 1997: Set 3" dia. alum. cap, stamped to identify the corner over the existing 4" dia. concrete monument.
 Set tags P.S. #31591 in the following reestablished witnesses:
 10" Twin Oak - S10E - 48.82'
 12" Hemlock - S70E - 32.28'
 7" W. Pine - N53E - 27.72'
 12" Hemlock - N15W - 34.95'



Signed by Thomas L. Fabis Date August 15, 1997
 Surveyor's Michigan License No. 31591