

**2000 Alcona County Remonumentation Corner  
LAND CORNER RECORDATION CERTIFICATE**  
Filing Requirement of Act 74, Mich. P.A. 1970

For corners in

<u>Alcona</u> <small>(County)</small>	Located In:	Corner Code #
1. Public Land Survey	T 28N R8E	D5 <input checked="" type="checkbox"/>
	T _____ R _____	_____
	T _____ R _____	_____
	T _____ R _____	_____
2. Property Controlling in Section	S _____ T _____ R _____	_____
	S _____ T _____ R _____	_____
3. Miscellaneous Property in Sec.	S _____ T _____ R _____	_____
	S _____ T _____ R _____	_____

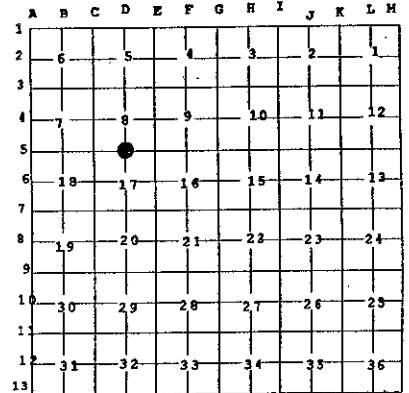
Alcona County  
Remonumentation  
Liber 2 Page 56

Filed for Record in  
ALCONA COUNTY MICHIGAN  
DORIS A GAUTHIER  
On 09-20-2000 At 09:36 am.  
LAND CORNER, 9.00

Register of Deeds Stamp & File  
Number

4. Lot No. \_\_\_\_\_, Recorded Plat \_\_\_\_\_  
5. Private Claims \_\_\_\_\_

I, Daniel T. Kibbe, in a field survey on April 7, 2000 do hereby state that under requirements of P.A. 74, Michigan P.A. of 1970, the corner points mentioned in lines 1 and 2 above were in conformance with regulations and rules therefore as required in the current manual of survey instructions of the United States Department of the Interior, Bureau of Land Management or by a decree of a Court of Law and /or that the corner points mentioned in lines 3, 4 and 5 above were in conformance with the rules of the Michigan Board of Land Surveyors or by a Decree of a Court of Law; established, re-established, monumented, recovered, found as expressed below:



**NOTE: Not more than 2 corners, all in the same town and range, may be recorded on this certificate.**

**A. Description of original monument and accessories and/or subsequent restoration:**

- 1840: GLO Survey by Thos. Pattison Set ¼ post. Referenced: W. Birch 12-N4°E-33/Cedar 10-S15°W-30
- 1976: Survey by Duane R. MacNeill Found railroad spike. Referenced: Fence Post-N40°W-66.44'/Power Pole-N46°E-53.93'/3" Aspen-S30°E-47.87'
- 1986: Survey by Duane R. MacNeill Referenced corner
- 1993: March Survey by Duane R. MacNeill Found Survey Iron
- 1993: November Survey by Duane R. MacNeill Referenced corner

**B. Description of corner evidence found and/or method applied in restoring or reestablishing corner:**

Found railroad spike 4' South of centerline road E-W 1' West of road to North.

This corner position is compatible with county & local surveys. This corner position is accepted as a careful and faithful perpetuation of the position of the original corner.

**C. Description of monument for corner and accessories established to perpetuate locating the position of the corner:**

2000: Placed 3" Alcona County cap stamped to identify the corner over 1/2" iron rod 6" below grade.  
Referenced:

- Set tag in 10" poplar-S45°E-78.13'
- Set tag in power pole-N42°E-51.37'
- Set tag in fence post-S85°W-98.35'
- Set tag in tag in power pole-N71°W-179.95'

APPROVED LAND CORNER  
P A 345 of 1990  
ALCONA COUNTY  
Date 9-6-2000  
County Rep. D.T.B. GA



Signed by \_\_\_\_\_  
Surveyor's Michigan License No. 37278

Date September 15, 2000

**SURVEY &  
REMONUMENTATION**

**FEB 07 2001**

**SECTION**