

**2000 Alcona County Remonumentation Corner  
LAND CORNER RECORDATION CERTIFICATE**  
Filing Requirement of Act 74, Mich. P.A. 1970

For corners in

<u>Alcona</u> (County)	Located In:	Corner Code #
1. Public Land Survey	T 28N R8E	E-5 ✓
	T _____ R _____	_____
	T _____ R _____	_____
	T _____ R _____	_____
2. Property Controlling in Section	S _____ T _____ R _____	_____
	S _____ T _____ R _____	_____
3. Miscellaneous Property in Sec.	S _____ T _____ R _____	_____
	S _____ T _____ R _____	_____

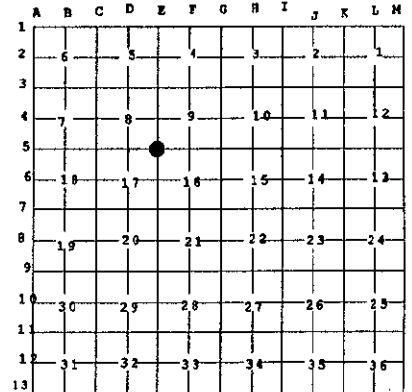
Alcona County  
Remonumentation  
Liber 2 Page 54

Filed for Record in  
ALCONA COUNTY MICHIGAN  
DORIS A GAUTHIER  
On 09-20-2000 At 09:36 am.  
LAND CORNER 9.00

Register of Deeds Stamp & File  
Number

4. Lot No. \_\_\_\_\_, Recorded Plat \_\_\_\_\_  
5. Private Claims \_\_\_\_\_

I, Daniel T. Kibbe, in a field survey on June 7, 2000 do hereby state that under requirements of P.A. 74, Michigan P.A. of 1970, the corner points mentioned in lines 1 and 2 above were in conformance with regulations and rules therefore as required in the current manual of survey instructions of the United States Department of the Interior, Bureau of Land Management or by a decree of a Court of Law and /or that the corner points mentioned in lines 3, 4 and 5 above were in conformance with the rules of the Michigan Board of Land Surveyors or by a Decree of a Court of Law; established, re-established, monumented, recovered, found as expressed below:



**NOTE: Not more than 2 corners, all in the same town and range, may be recorded on this certificate.**

**A. Description of original monument and accessories and/or subsequent restoration:**

- 1840: GLO Survey by Thos. Pattison Set corner post  
Referenced: Hemlock 16-S15W-32/  
Hemlock 16-N25°W-68.95'
- 1983: Recorded Corner by Ronald R. Bischer Found Railroad spike.  
Referenced: Power Pole-N32°W-68.95'/10" Maple-N74°E-78.54'/Telephone pole-S48°W-49.45'
- 1986: Survey by Duane R. MacNeill Referenced corner.
- 1993: Survey by Thomas L. Fabis Existing Railroad spike.
- 1993: Survey by Duane R. MacNeill Referenced corner.
- 1996: Survey by Thomas L. Fabis Existing Railroad spike.

**B. Description of corner evidence found and/or method applied in restoring or reestablishing corner:**

Found railroad spike flush 5' E of centerline road North and fence to South 3' N of centerline road E & W.  
Also found nail and tag 1' South of centerline road E & W centerline road N and fence to South.

This corner position is compatible with county & local surveys. This corner position is accepted as a careful and faithful perpetuation of the position of the original corner.

**C. Description of monument for corner and accessories established to perpetuate locating the position of the corner:**

2000: Placed 3" Alcona County cap stamped to identify the corner over 1/2" iron rod in monument box.  
Referenced:

- Found tag #15410 in power pole-N30°W-68.99'
- Found tag #15410 in 18" maple-N75°E-78.51'
- Set tag 37278 in 12" maple S55°E-63.01'
- Set tag 37278 in fence post S54°W-56.88'
- Found nail and tag S50°W-4.21'

APPROVED LAND CORNER  
P A 345 of 1990  
ALCONA COUNTY  
Date 9-6-2000  
County Rep D.T. Kibbe



Signed by \_\_\_\_\_  
Surveyor's Michigan License No. 37278

Date September 15, 2000

PROFESSIONAL SURVEYORS, JAN. 28, 1971

REVISED MAY 14, 1975

**SURVEY &  
REMONUMENTATION**

**FEB 07 2001**

**SECTION**

FORM APPROVED BY MICHIGAN STATE BOARD OF

REVISED JAN., 1983  
REVISED OCT., 1995