

**2000 Alcona County Remonumentation Corner  
LAND CORNER RECORDATION CERTIFICATE**  
Filing Requirement of Act 74, Mich. P.A. 1970

For corners in

<u>Alcona</u> (County)	Located In:	Corner Code #
1. Public Land Survey	T <u>28N</u> R <u>8E</u>	<u>F-5</u> ✓
	T _____ R _____	_____
	T _____ R _____	_____
	T _____ R _____	_____
2. Property Controlling in Section	S _____ T _____ R _____	_____
	S _____ T _____ R _____	_____
3. Miscellaneous Property in Sec.	S _____ T _____ R _____	_____
	S _____ T _____ R _____	_____

Alcona County  
Remonumentation  
Liber 2 Page 53

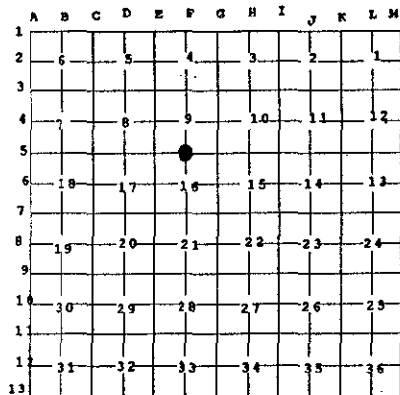
Filed for Record in  
ALCONA COUNTY MICHIGAN  
DORIS A GAUTHIER  
On 09-20-2000 At 09:36 am.  
LAND CORNER 9.00

Register of Deeds Stamp & File  
Number

4. Lot No. \_\_\_\_\_, Recorded Plat \_\_\_\_\_  
5. Private Claims \_\_\_\_\_

I, Daniel T. Kibbe, in a field survey on June 8, 2000 do hereby state that under requirements of P.A. 74, Michigan P.A. of 1970, the corner points mentioned in lines 1 and 2 above were in conformance with regulations and rules therefore as required in the current manual of survey instructions of the United States Department of the Interior, Bureau of Land Management or by a decree of a Court of Law and/or that the corner points mentioned in lines 3, 4 and 5 above were in conformance with the rules of the Michigan Board of Land Surveyors or by a Decree of a Court of Law; established, re-established, monumented, recovered, found as expressed below:

**NOTE: Not more than 2 corners, all in the same town and range, may be recorded on this certificate.**



**A. Description of original monument and accessories and/or subsequent restoration:**

- 1840: GLO Survey by Thos. Pattison Set ¼ post  
Referenced: Hemlock 16-S25°W-12'/Fir 8-N45°E-22'
- 1983: Recorded Corner by Ronald R. Bischer Set railroad spike.  
Referenced: Power Pole-N49°E-86.56'/Buried Cable Sing-S06°W-28.55'/  
Tele. Cable Box-S65°W-54.05'
- 1993: Survey by Thomas L. Fabis Existing railroad spike.  
Referenced: Power Pole-N47°E-86.76'/2" Apple-S10°W-29.65'/c/l Tele. Box-S60°W-54.00'  
½" iron rod & cap-North-33.00'
- 1996: Survey by Thomas L. Fabis Existing railroad spike.

**B. Description of corner evidence found and/or method applied in restoring or reestablishing corner:**

Found railroad spike in centerline of Swede Rd.

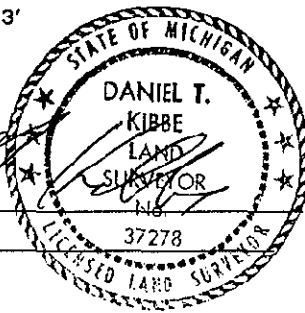
This corner position is compatible with county & local surveys. This corner position is accepted as a careful and faithful perpetuation of the position of the original corner.

**C. Description of monument for corner and accessories established to perpetuate locating the position of the corner:**

- 2000: Placed 3" Alcona County cap stamped to identify the corner over 1/2" iron rod in monument box.  
Referenced:  
X on East end of 12" culvert-S44°W-25.60'  
X on West end of 12" culvert-S69°W-43.48'  
Found Fabis tag in power pole-N47°E-86.79'  
Found WTL tag in power pole N65°W-222.53'

APPROVED LAND CORNER  
P A 345 of 1990  
ALCONA COUNTY  
Date 9-6-2000  
County Rep D.T.K.

Signed by \_\_\_\_\_  
Surveyor's Michigan License No. 37278



Date September 15, 2000

**SURVEY &  
REMONUMENTATION**  
  
**FEB 07 2001**  
  
**SECTION**