

**2000 Alcona County Remonumentation Corner
LAND CORNER RECORDATION CERTIFICATE**

Filing Requirement of Act 74, Mich. P.A. 1970

For corners in

Alcona <small>(County)</small>	Located in:	Corner Code #
1. Public Land Survey	T <u>28N</u> R <u>8E</u>	<u>G-4</u> <i>r</i>
	T _____ R _____	_____
	T _____ R _____	_____
	T _____ R _____	_____
2. Property Controlling in Section	S _____ T _____ R _____	_____
	S _____ T _____ R _____	_____
3. Miscellaneous Property in Sec.	S _____ T _____ R _____	_____
	S _____ T _____ R _____	_____

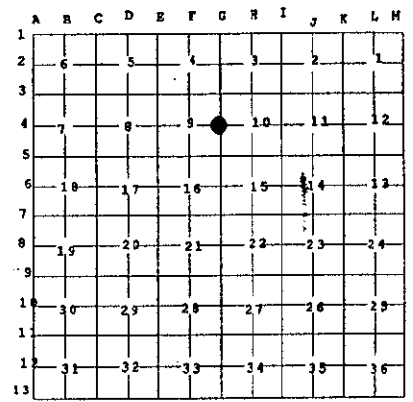
Alcona County
Remonumentation
Liber 2 Page 52

Filed for Record in
ALCONA COUNTY MICHIGAN
DORIS A GAUTHIER
On 09-20-2000 At 09:36 am.
LAND CORNER 9.00

**Register of Deeds Stamp & File
Number**

4. Lot No. _____, Recorded Plat _____
5. Private Claims _____

I, Daniel T. Kibbe, in a field survey on June 8, 2000 do hereby state that under requirements of P.A. 74, Michigan P.A. of 1970, the corner points mentioned in lines 1 and 2 above were in conformance with regulations and rules therefore as required in the current manual of survey instructions of the United States Department of the Interior, Bureau of Land Management or by a decree of a Court of Law and/or that the corner points mentioned in lines 3, 4 and 5 above were in conformance with the rules of the Michigan Board of Land Surveyors or by a Decree of a Court of Law; established, re-established, monumented, recovered, found as expressed below:



NOTE: Not more than 2 corners, all in the same town and range, may be recorded on this certificate.

A. Description of original monument and accessories and/or subsequent restoration:

- 1840: GLO Survey by Thos. Pattison Set 1/4 Corner. Referenced: Hemlock 10-N37°W-19/Beech 6-S40°W-10
- 1972: Survey by Jim Scott Referenced 1/4 corner.
- 1993: Survey by Thomas L. Fabis Found nothing.
- 1995: Survey by John F. Oliver Found P.K. Nail.
- 1997: Survey by Daniel T. Kibbe Found P.K. Nail at SP Position. Referenced: Cemetery Sign Post-N76°E-35.32'/Power Pole-N30°W-73.79'/Fence Post-S35°W-80.82' 7" Jack Pine-N46°E-68.00'

B. Description of corner evidence found and/or method applied in restoring or reestablishing corner:

Found PK in North bound lane of Gillard Rd. 3.7' East of centerline.

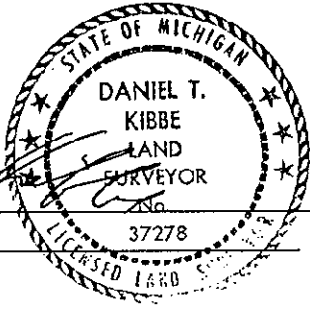
This corner position is compatible with county & local surveys. This corner position is accepted as a careful and faithful perpetuation of the position of the original corner.

C. Description of monument for corner and accessories established to perpetuate locating the position of the corner:

- 2000: Placed 3" Alcona County cap stamped to identify the corner over 1/2" iron rod in monument box.
Referenced:
N. Cemetery sign post-N76°E-35.31'
Found tag PS#37278 in 8" jack pine-N46°E-68.01'
Found tag PS#37278 in power pole-N30°W-73.80'
Found tag PS#37278 in fence post-S35°W-80.81'

APPROVED LAND CORNER
P A 345 of 1990
ALCONA COUNTY
Date: 9-15-2000
County Rep. D.T.K.

Signed by _____
Surveyor's Michigan License No. 37278



Date September 15, 2000

**SURVEY &
REMONUMENTATION**

FEB 07 2001

SECTION