

**2000 Alcona County Remonumentation Corner
LAND CORNER RECORDATION CERTIFICATE
Filing Requirement of Act 74, Mich. P.A. 1970**

For corners in _____

<u>Alcona</u> <small>(County)</small>	Located In:	Corner Code #
1. Public Land Survey	T <u>28N R8E</u>	<u>G-5</u> ✓
—	T _____ R _____	_____
—	T _____ R _____	_____
—	T _____ R _____	_____
2. Property Controlling in Section	S _____ T _____ R _____	_____
—	S _____ T _____ R _____	_____
3. Miscellaneous Property in Sec.	S _____ T _____ R _____	_____
—	S _____ T _____ R _____	_____

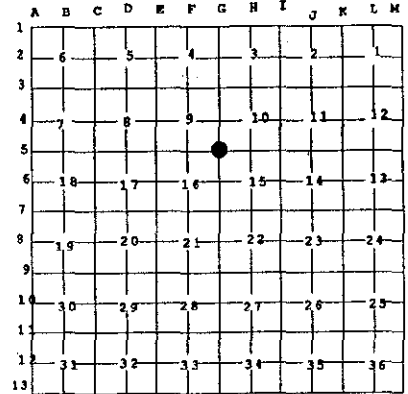
Alcona County
Remonumentation
Liber 2 Page 51

Filed for Record in
ALCONA COUNTY MICHIGAN
DORIS A GAUTHIER
On 09-20-2000 At 09:36 a.m.
LAND CORNER 9.00

Register of Deeds Stamp & File
Number

4. Lot No. _____, Recorded Plat _____
5. Private Claims _____

I, Daniel T. Kibbe, in a field survey on June 8, 2000 do hereby state that under requirements of P.A. 74, Michigan P.A. of 1970, the corner points mentioned in lines 1 and 2 above were in conformance with regulations and rules therefore as required in the current manual of survey instructions of the United States Department of the Interior, Bureau of Land Management or by a decree of a Court of Law and/or that the corner points mentioned in lines 3, 4 and 5 above were in conformance with the rules of the Michigan Board of Land Surveyors or by a Decree of a Court of Law; established, re-established, monumented, recovered, found as expressed below:



NOTE: Not more than 2 corners, all in the same town and range, may be recorded on this certificate.

A. Description of original monument and accessories and/or subsequent restoration:

- 1840: GLO Survey by Thos. Pattison Set section corner Referenced: Cedar 14-N36°E-18/Hemlock 15-S85°W-30
- 1904: County Survey by Edn. Chapelle Set dark boulder 9x14 w/ crockery under it. Referenced: W. Pine Stump 30-N60°W-50.75
- 1983: L.C.R.C. by Ronald R. Bischer Found 5/8" Sq. Bar Referenced: Power Pole-N32°W-56.38'/Fence Corner-N60°E-58.83'/Fence Post-S06°W-57.36'
- 1987: Survey by Duane R. MacNeill Referenced corner
- 1993: Survey by Thomas L. Fabis Existing 5/8" Sq. Bar. Referenced: Power Pole-N45°W-56.38'/3" W. Pine-S55°E-50.15'/c/l Tele. Box-S40°W-47.25' South Sign Post-N50°E-59.15'
- 1995: Survey by John F. Oliver Found 1/2" bar
- 1995: Survey by John F. Oliver Found 1/4" bar
- 1997: Survey by Daniel T. Kibbe Referenced recorded corner, Liber 1, page 10.
- 1998: Survey by John F. Oliver Found 5/8" bar.

B. Description of corner evidence found and/or method applied in restoring or reestablishing corner;

Found 5/8" square bar 3" below grade centerline of Swede Rd., centerline of Gillard Rd.

This corner position is compatible with county & local surveys. This corner position is accepted as a careful and faithful perpetuation of the position of the original corner.

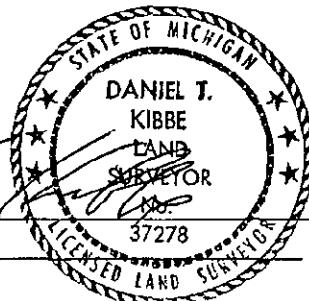
C. Description of monument for corner and accessories established to perpetuate locating the position of the corner:

2000: Placed 3" Alcona County cap stamped to identify the corner over 1/2" iron rod in monument box.
Referenced:

- Found RLS tag in power pole-N37°W-56.42'
- Found Fabis tag south post church sign-N64°E-59.15'
- Found Fabis tag in 6" white pine-S38°E-50.13'
- Centerline tel./box-S59°W-47.42'

APPROVED LAND CORNER
P A 345 of 1990
ALCONA COUNTY
Date 9-6-2000
County Rep. Daniel T. Kibbe

Signed by _____
Surveyor's Michigan License No. 37278



Date September 15, 2000