

**LAND CORNER RECORDATION CERTIFICATE**  
**Filing Requirement of Act 74, Mich. P.A. 1970**

For corners in

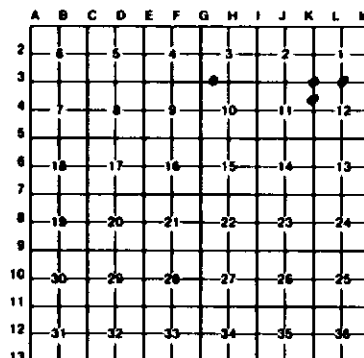
<u>Alger</u> <small>(County)</small>	Located In:	Corner Code #/
1. Public Land Survey	T <u>44N</u> R <u>21W</u>	<u>13</u>
	T ___ R ___	<u>13</u>
	T ___ R ___	_____
	T ___ R ___	_____
2. Property Controlling in Section	S <u>3</u> T ___ R ___	<u>15</u>
	S <u>11</u> T ___ R ___	<u>7</u>
3. Miscellaneous Property in Sec.	S ___ T ___ R ___	_____
	S ___ T ___ R ___	_____

Register of Deeds Stamp & File Number

4. Lot No. \_\_\_\_\_, Recorded Plat \_\_\_\_\_  
 5. Private Claims \_\_\_\_\_

I, Keith Sackett, in a field survey on April 15, 1991, do hereby certify that under requirements of P.A. 74, Michigan P.A. of 1970, the corner points mentioned in lines 1 and 2 above were in conformance with regulations and rules therefore as required in the current manual of survey instructions of the United States Department of the Interior, Bureau of Land Management or by a decree of a Court of Law and/or that the corner points mentioned in lines 3, 4 and 5 above were in conformance with the rules of the Michigan Board of Land Surveyors or by a Decree of a Court of Law; established, re-established, monumented, re-monumented, recovered, found as expressed below:

**NOTE: Not more than 4 corners, all in the same town and range, may be recorded on this certificate.**



A. Description of original monument and accessories and/or subsequent restoration:

<u>13</u>	<u>13</u>	<u>15</u>	<u>7</u>
Southwest corner of Section 1. 1970 F. Bray - re-witnessed corner as set by County Surveyor George Depev in 1915. 10ft - 7" b. cherry N14E, 16.1', 12" b. cherry S21E 21.2'	Quarter corner common to Sections 1 and 12. Original monument and accessories not found.	West one-sixteenth corner common to Sections 3 and 10. Not set on original survey nor subsequently, apparently.	North one-sixteenth corner common to Sections 11 and 12. Not set on original survey nor subsequently, apparently.

B. Description of corner evidence found and/or method applied in restoring or reestablishing corner:

<u>13</u>	<u>13</u>	<u>15</u>	<u>7</u>
Found monument as described by Bray, re-witnessed as found.	Restored equidistant and on line between the southeast and southwest corners of Section 1.	Set midway and on line.	Set midway and on line.

C. Description of monument for corner and accessories established to perpetuate locating the position of the corner:

<u>13</u>	<u>13</u>	<u>15</u>	<u>7</u>
3 1/4" brass cap on 1 1/2" iron pipe. 6" cherry N44E 26.55' 4" cherry S16E 13.8' 9" white pine S24W 56.75' 12" white spruce N74W 25.2'	DNR monument. 5" tamarack N77E 73.9' 4" spruce S24E 73.1' 6" balsam S43W 44.0' 7" spruce N64W 31.25'	DNR monument. 4" sugar N21E 6.75' 5" sugar S38E 19.35' 4" sugar S40W 28.6' 12" sugar N53W 10.2'	DNR monument. 6" maple N50E 53.3' 6" maple S31E 51.0' 7" red pine S51W 77.1' 7" white pine N64W 72.5'

Signed by Keith Sackett Date June 13, 1991

Surveyor's Michigan License No. 19006