

STATE OF MICHIGAN
DEPARTMENT
OF
NATURAL RESOURCES

LAND CORNER RECORD

Alger COUNTY

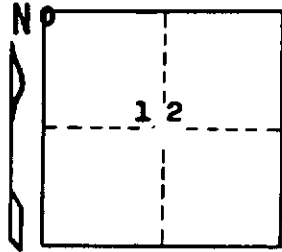
T 44 N R 21 W

DESCRIPTION OF CORNER Section corner for sections $\frac{2}{1}$ $\frac{11}{12}$

CORNER MONUMENT $\frac{3}{4}$ " brass cap on $\frac{1}{2}$ " iron pipe

DATE MONUMENT PLACED AND WITNESSED 6/30/70, F. J. Bray with M. Conley

WITNESSES TO CORNER..... 7" B. Cherry (NBT) N 14° E, 16.1'



12" B. Cherry (NBT) S 21° E, 21.2'

AND

CIRCLE CORNER REGISTERED

DESCRIPTION IN DETAIL AS TO HOW CORNER WAS LOCATED AND IDENTIFIED OR RESTORED.

This corner was re-witnessed as set by County Surveyor George L. Depew in 1915. Corner set at intersection of $\frac{1}{2}$ of roads to east and to south. The county surveyor set corner by statements received from James Swedale and Herman Webber.

SURVEYOR'S SEAL

DISTRIBUTION:

SIGNED

Frank J. Bray
REGISTERED LAND SURVEYOR
Frank J. Bray

DATE

7/14/70

County Courthouse
Area Forester (Regions I & II)
District or Region Surveyor
Forestry Div., Lansing

R 4047
Rev. 10/68