

MICHIGAN
DEPARTMENT OF CONSERVATION
FORESTRY DIVISION

LAND CORNER RECORD

T. 46 N.R. 17 W

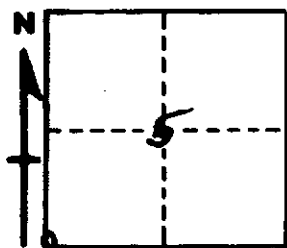
Alcona COUNTY

DESCRIPTION OF CORNER Section corner common to Sections 5, 6, 7, and 8

CORNER MONUMENT Monument Box in Blacktop Road

DATE ~~RECORDED~~ WITNESSED 8/26/60

WITNESSES TO CORNER.....



CIRCLE CORNER REGISTERED

AND

DESCRIPTION IN DETAIL AS TO HOW CORNER WAS LOCATED AND IDENTIFIED OR RESTORED.

This corner was placed by Michigan State Highway Department. Corner lies two links west of centerline of M-94 at E-W road Junction.

SURVEYOR'S SEAL

SIGNED

Billy D. Buckler

REGISTERED LAND SURVEYOR

Billy D. Buckler

DATE 2/23/61