

STATE OF MICHIGAN  
DEPARTMENT  
OF  
NATURAL RESOURCES

LAND CORNER RECORD

Alger COUNTY

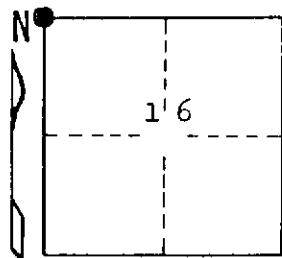
T 46 N R 22 W

DESCRIPTION OF CORNER Section corner for sections  $\frac{8}{9}$  17/16

CORNER MONUMENT 1" iron pipe with 4" aluminum cap

DATE MONUMENT PLACED AND WITNESSED 11/13/69, F. J. Bray with B. McDonald

WITNESSES TO CORNER..... 12" S. Maple (S.16) (NBT) S 80° E, 24 links



12" H. Maple (S.17) (NBT) S 65° W, 18 links

2" iron pipe N 01° E, 85½ links

AND

Ford Mo. Co. and Celotex tags S 49° E, 222 links

CIRCLE CORNER REGISTERED

DESCRIPTION IN DETAIL AS TO HOW CORNER WAS LOCATED AND IDENTIFIED OR RESTORED.

This corner was reestablished by proportioning distance between section corners to north and to south. Stream crossings to east check fairly well. Old north and south blazes in line with corner. Iron pipe set by unknown party to north.

SURVEYOR'S SEAL

DISTRIBUTION:

SIGNED

*Frank J. Bray*  
REGISTERED LAND SURVEYOR  
Frank J. Bray

DATE

12/10/69

County Courthouse  
Area Forester (Regions I & II)  
District or Region Surveyor  
Forestry Div., Lansing

R 4047  
Rev. 10/68